

## Product datasheet for **TA503737BM**

### **EDG2 (LPAR1) Mouse Monoclonal Antibody (HRP conjugated) [Clone ID: OTI1G6]**

#### **Product data:**

Product Type:	Primary Antibodies
Clone Name:	OTI1G6
Applications:	FC, IF, WB
Recommended Dilution:	WB 1:2000, IF 1:100, FLOW 1:100
Reactivity:	Human, Mouse, Rat
Host:	Mouse
Isotype:	IgG2b
Clonality:	Monoclonal
Immunogen:	Full length human recombinant protein of human LPAR1(NP_001392) produced in HEK293T cell.
Formulation:	PBS (pH 7.3) containing 1% BSA, 50% glycerol.
Concentration:	0.5 mg/ml
Purification:	Purified from mouse ascites fluids or tissue culture supernatant by affinity chromatography (protein A/G)
Conjugation:	HRP
Storage:	Store at -20°C as received.
Stability:	Stable for 12 months from date of receipt.
Predicted Protein Size:	40.9 kDa
Gene Name:	lysophosphatidic acid receptor 1
Database Link:	<a href="#">NP_001392</a> <a href="#">Entrez Gene 14745 Mouse</a> <a href="#">Entrez Gene 116744 Rat</a> <a href="#">Entrez Gene 1902 Human</a> <a href="#">Q92633</a>



[View online »](#)

**Background:**

The integral membrane protein encoded by this gene is a lysophosphatidic acid (LPA) receptor from a group known as EDG receptors. These receptors are members of the G protein-coupled receptor superfamily. Utilized by LPA for cell signaling, EDG receptors mediate diverse biologic functions, including proliferation, platelet aggregation, smooth muscle contraction, inhibition of neuroblastoma cell differentiation, chemotaxis, and tumor cell invasion. Two transcript variants encoding the same protein have been identified for this gene [provided by RefSeq, Jul

**Synonyms:**

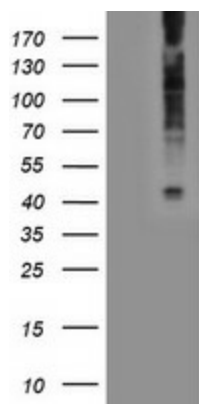
edg-2; EDG2; Gpcr26; LPA1; Mrec1.3; rec.1.3; vzg-1; VZG1

**Protein Families:**

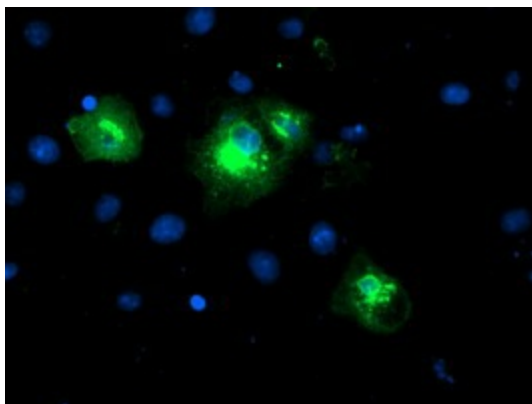
Druggable Genome, GPCR, Transmembrane

**Protein Pathways:**

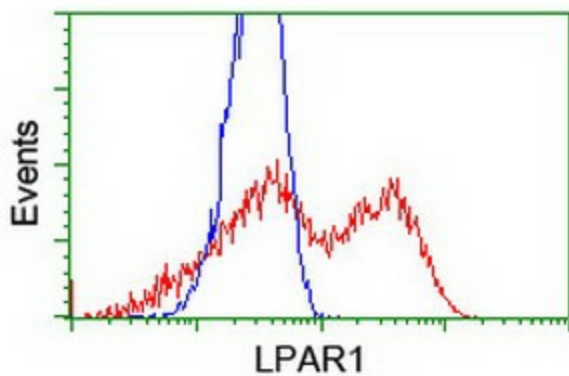
Gap junction, Neuroactive ligand-receptor interaction

**Product images:**

HEK293T cells were transfected with the pCMV6-ENTRY control (Cat# [PS100001], Left lane) or pCMV6-ENTRY LPAR1 (Cat# [RC206065], Right lane) cDNA for 48 hrs and lysed. Equivalent amounts of cell lysates (5 ug per lane) were separated by SDS-PAGE and immunoblotted with anti-LPAR1 (Cat# [TA503737]). Positive lysates [LY400545] (100ug) and [LC400545] (20ug) can be purchased separately from OriGene.



Anti-LPAR1 mouse monoclonal antibody ([TA503737]) immunofluorescent staining of COS7 cells transiently transfected by pCMV6-ENTRY LPAR1 ([RC206065]).



HEK293T cells transfected with either [RC206065] overexpress plasmid (Red) or empty vector control plasmid (Blue) were immunostained by anti-LPAR1 antibody ([TA503737]), and then analyzed by flow cytometry.