

Product datasheet for **TA503730BM**

SERPINB13 Mouse Monoclonal Antibody (HRP conjugated) [Clone ID: OTI1D4]

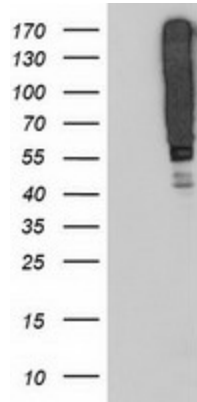
Product data:

Product Type:	Primary Antibodies
Clone Name:	OTI1D4
Applications:	FC, WB
Recommended Dilution:	WB 1:500~2000, FLOW 1:100
Reactivity:	Human, Mouse
Host:	Mouse
Isotype:	IgG1
Clonality:	Monoclonal
Immunogen:	Full length human recombinant protein of human SERPINB13(NP_036529) produced in HEK293T cell.
Formulation:	PBS (pH 7.3) containing 1% BSA, 50% glycerol.
Concentration:	0.5 mg/ml
Purification:	Purified from mouse ascites fluids or tissue culture supernatant by affinity chromatography (protein A/G)
Conjugation:	HRP
Storage:	Store at -20°C as received.
Stability:	Stable for 12 months from date of receipt.
Predicted Protein Size:	44.1 kDa
Gene Name:	serpin family B member 13
Database Link:	NP_036529 Entrez Gene 241196 Mouse Entrez Gene 5275 Human Q9UIV8
Synonyms:	headpin; HSHUR7SEQ; HUR7; PI13
Protein Families:	Druggable Genome, Transmembrane

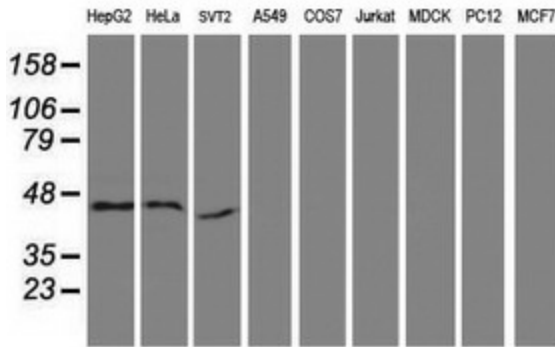


[View online »](#)

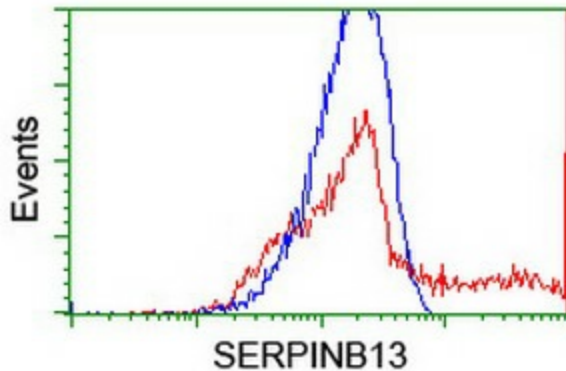
Product images:



HEK293T cells were transfected with the pCMV6-ENTRY control (Left lane) or pCMV6-ENTRY SERPINB13 ([RC211032], Right lane) cDNA for 48 hrs and lysed. Equivalent amounts of cell lysates (5 ug per lane) were separated by SDS-PAGE and immunoblotted with anti-SERPINB13. Positive lysates [LY415794] (100ug) and [LC415794] (20ug) can be purchased separately from OriGene.



Western blot analysis of extracts (35ug) from 9 different cell lines by using anti-SERPINB13 monoclonal antibody (HepG2: human; HeLa: human; SVT2: mouse; A549: human; COS7: monkey; Jurkat: human; MDCK: canine; PC12: rat; MCF7: human).



HEK293T cells transfected with either [RC211032] overexpress plasmid (Red) or empty vector control plasmid (Blue) were immunostained by anti-SERPINB13 antibody ([TA503730]), and then analyzed by flow cytometry.