

Product datasheet for **TA503729**

Nucleotide binding protein like (NUBPL) Mouse Monoclonal Antibody [Clone ID: OTI5F8]

Product data:

| | |
|-------------------------|---|
| Product Type: | Primary Antibodies |
| Clone Name: | OTI5F8 |
| Applications: | FC, WB |
| Recommended Dilution: | WB 1:500~2000, FLOW 1:100 |
| Reactivity: | Human, Mouse, Rat |
| Host: | Mouse |
| Isotype: | IgG1 |
| Clonality: | Monoclonal |
| Immunogen: | Human recombinant protein fragment corresponding to amino acids 1-250 of human NUBPL(NP_079428) produced in E.coli. |
| Formulation: | PBS (pH 7.3) containing 1% BSA, 50% glycerol and 0.02% sodium azide. |
| Concentration: | 0.68 mg/ml |
| Purification: | Purified from mouse ascites fluids or tissue culture supernatant by affinity chromatography (protein A/G) |
| Conjugation: | Unconjugated |
| Storage: | Store at -20°C as received. |
| Stability: | Stable for 12 months from date of receipt. |
| Predicted Protein Size: | 33.9 kDa |
| Gene Name: | nucleotide binding protein like |
| Database Link: | NP_079428 Entrez Gene 76826 Mouse Entrez Gene 299008 Rat Entrez Gene 80224 Human Q8TB37 |



[View online »](#)

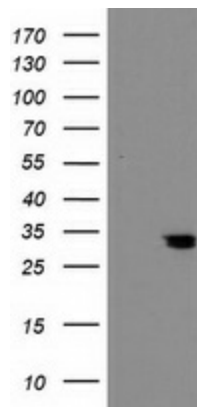
Background:

This gene encodes a member of the Mrp/NBP35 ATP-binding proteins family. The encoded protein is required for the assembly of the respiratory chain NADH dehydrogenase (complex I), an oligomeric enzymatic complex located in the inner mitochondrial membrane. The respiratory complex I consists of 45 subunits and 8 iron-sulfur (Fe/S) clusters. This protein is an Fe/S protein that plays a critical role in the assembly of respiratory complex I, likely by transferring Fe/S into the Fe/S-containing complex I subunits. Mutations in this gene cause mitochondrial complex I deficiency. Alternatively spliced transcript variants encoding distinct isoforms have been identified.

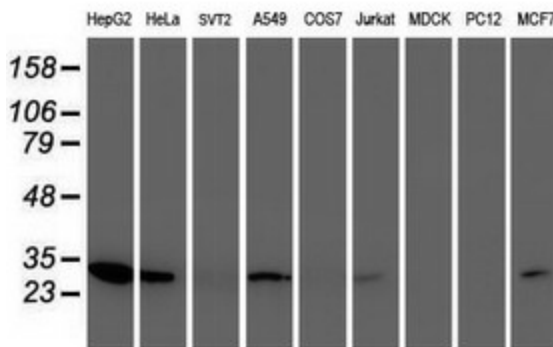
Synonyms:

C14orf127; huInd1; IND1

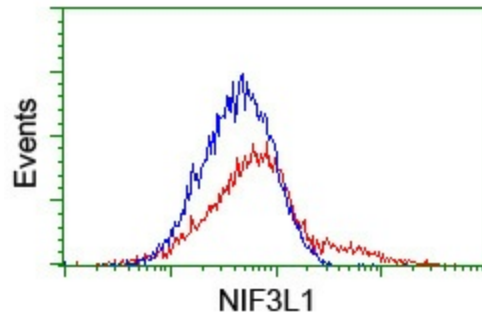
Product images:



HEK293T cells were transfected with the pCMV6-ENTRY control (Left lane) or pCMV6-ENTRY NUBPL ([RC204385], Right lane) cDNA for 48 hrs and lysed. Equivalent amounts of cell lysates (5 ug per lane) were separated by SDS-PAGE and immunoblotted with anti-NUBPL. Positive lysates [LY410869] (100ug) and [LC410869] (20ug) can be purchased separately from OriGene.



Western blot analysis of extracts (35ug) from 9 different cell lines by using anti-NUBPL monoclonal antibody.



HEK293T cells transfected with either [RC204385] overexpress plasmid (Red) or empty vector control plasmid (Blue) were immunostained by anti-NUBPL antibody (TA503729), and then analyzed by flow cytometry.