

Product datasheet for **TA503723BM**

SEC14 like protein 2 (SEC14L2) Mouse Monoclonal Antibody (HRP conjugated) [Clone ID: OTI4H2]

Product data:

Product Type:	Primary Antibodies
Clone Name:	OTI4H2
Applications:	FC, IF, IHC, WB
Recommended Dilution:	WB 1:500~2000, IHC 1:150, IF 1:100, FLOW 1:100
Reactivity:	Human, Dog, Monkey, Mouse, Rat
Host:	Mouse
Isotype:	IgG1
Clonality:	Monoclonal
Immunogen:	Full length human recombinant protein of human SEC14L2(NP_036561) produced in HEK293T cell.
Formulation:	PBS (pH 7.3) containing 1% BSA, 50% glycerol.
Concentration:	0.5 mg/ml
Purification:	Purified from mouse ascites fluids or tissue culture supernatant by affinity chromatography (protein A/G)
Conjugation:	HRP
Storage:	Store at -20°C as received.
Stability:	Stable for 12 months from date of receipt.
Predicted Protein Size:	46 kDa
Gene Name:	SEC14 like lipid binding 2
Database Link:	NP_036561 Entrez Gene 67815 Mouse Entrez Gene 477539 Dog Entrez Gene 718031 Monkey Entrez Gene 23541 Human O76054



[View online »](#)

Background:

This gene encodes a cytosolic protein which belongs to a family of lipid-binding proteins including Sec14p, alpha-tocopherol transfer protein, and cellular retinol-binding protein. The encoded protein stimulates squalene monooxygenase which is a downstream enzyme in the cholesterol biosynthetic pathway. Alternatively spliced transcript variants encoding different isoforms have been identified for this gene. [provided by RefSeq]

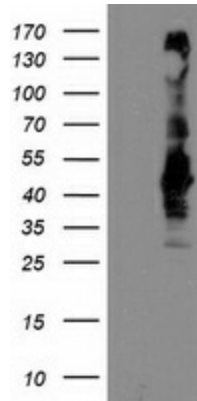
Synonyms:

C22orf6; SPF; TAP; TAP1

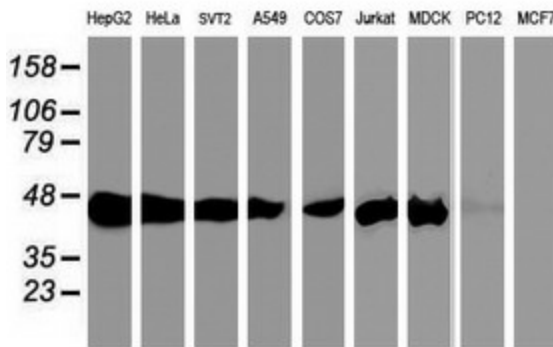
Protein Families:

Transcription Factors

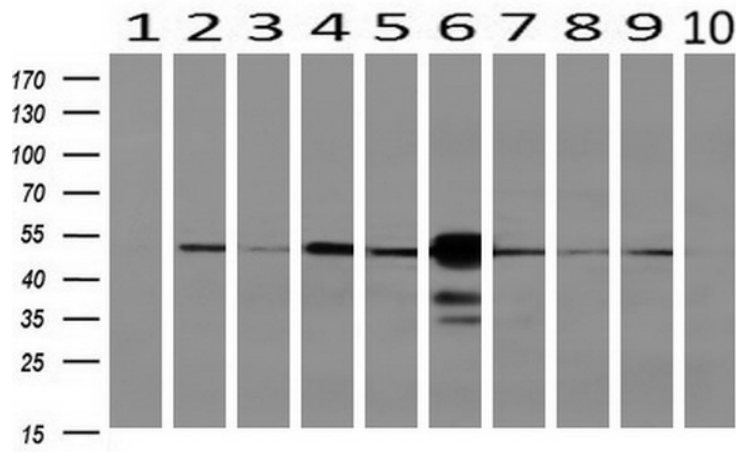
Product images:



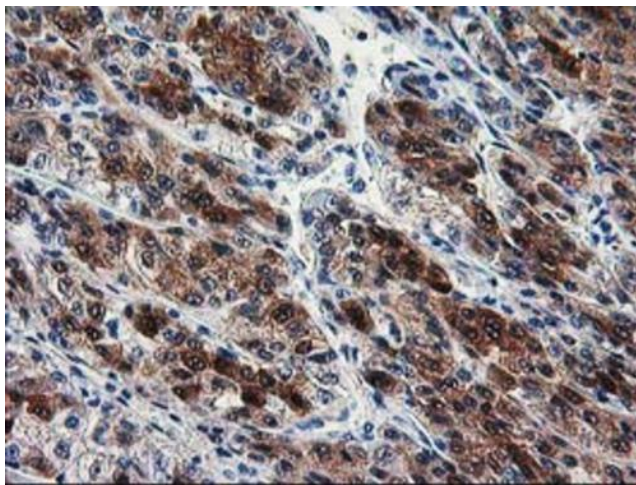
HEK293T cells were transfected with the pCMV6-ENTRY control (Cat# [PS100001], Left lane) or pCMV6-ENTRY SEC14L2 (Cat# [RC215994], Right lane) cDNA for 48 hrs and lysed. Equivalent amounts of cell lysates (5 ug per lane) were separated by SDS-PAGE and immunoblotted with anti-SEC14L2(Cat# [TA503723]). Positive lysates [LY415756] (100ug) and [LC415756] (20ug) can be purchased separately from OriGene.



Western blot analysis of extracts (35ug) from 9 different cell lines by using anti-SEC14L2 monoclonal antibody.



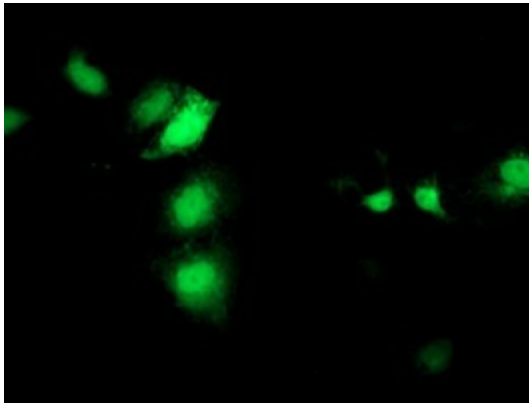
Western blot analysis of extracts (10ug) from 10 Human tissue by using anti-SEC14L2 monoclonal antibody at 1:200 (1: Testis; 2: Omentum; 3: Uterus; 4: Breast; 5: Brain; 6: Liver; 7: Ovary; 8: Thyroid gland; 9: colon;10: spleen).



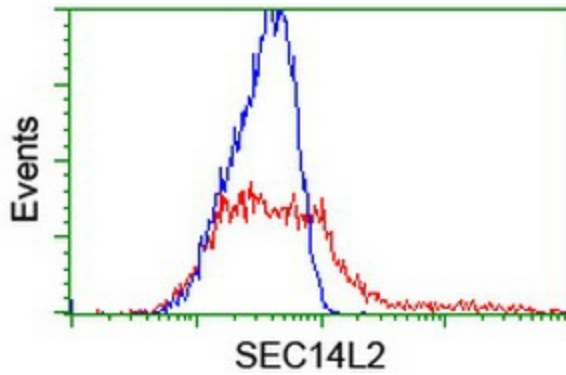
Immunohistochemical staining of paraffin-embedded Carcinoma of Human liver tissue using anti-SEC14L2 mouse monoclonal antibody. (Heat-induced epitope retrieval by 10mM citric buffer, pH6.0, 100°C for 10min, [TA503723])



Immunohistochemical staining of paraffin-embedded Human prostate tissue within the normal limits using anti-SEC14L2 mouse monoclonal antibody. (Heat-induced epitope retrieval by 10mM citric buffer, pH6.0, 100°C for 10min, [TA503723])



Anti-SEC14L2 mouse monoclonal antibody ([TA503723]) immunofluorescent staining of COS7 cells transiently transfected by pCMV6-ENTRY SEC14L2 ([RC215994]).



HEK293T cells transfected with either [RC215994] overexpress plasmid (Red) or empty vector control plasmid (Blue) were immunostained by anti-SEC14L2 antibody ([TA503723]), and then analyzed by flow cytometry.