

## Product datasheet for **TA503719M**

### **TBC1D21 Mouse Monoclonal Antibody [Clone ID: OTI3C2]**

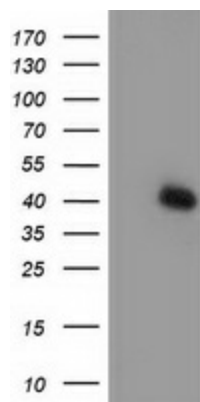
#### **Product data:**

Product Type:	Primary Antibodies
Clone Name:	OTI3C2
Applications:	IHC, WB
Recommended Dilution:	WB 1:500~2000, IHC 1:150
Reactivity:	Human, Mouse, Rat
Host:	Mouse
Isotype:	IgG2b
Clonality:	Monoclonal
Immunogen:	Full length human recombinant protein of human TBC1D21(NP_699187) produced in HEK293T cell.
Formulation:	PBS (pH 7.3) containing 1% BSA, 50% glycerol and 0.02% sodium azide.
Concentration:	1.1 mg/ml
Purification:	Purified from mouse ascites fluids or tissue culture supernatant by affinity chromatography (protein A/G)
Conjugation:	Unconjugated
Storage:	Store at -20°C as received.
Stability:	Stable for 12 months from date of receipt.
Predicted Protein Size:	39 kDa
Gene Name:	TBC1 domain family member 21
Database Link:	<a href="#">NP_699187</a> <a href="#">Entrez Gene 161514 Human</a> <a href="#">Q8IYX1</a>
Synonyms:	MgcRabGAP

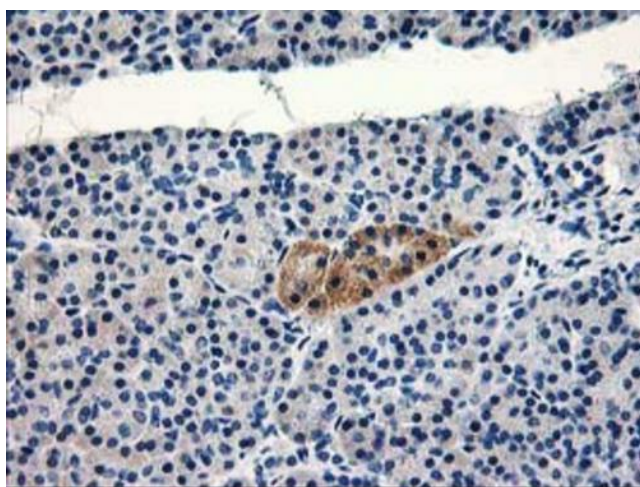


[View online »](#)

## Product images:



HEK293T cells were transfected with the pCMV6-ENTRY control (Left lane) or pCMV6-ENTRY TBC1D21 ([RC206651], Right lane) cDNA for 48 hrs and lysed. Equivalent amounts of cell lysates (5 ug per lane) were separated by SDS-PAGE and immunoblotted with anti-TBC1D21. Positive lysates [LY407069] (100ug) and [LC407069] (20ug) can be purchased separately from OriGene.



Immunohistochemical staining of paraffin-embedded Human pancreas tissue within the normal limits using anti-TBC1D21 mouse monoclonal antibody. Heat-induced epitope retrieval by EDTA solution buffer pH 8.0 at 120°C for 3 min.