

Product datasheet for **TA503714S**

PTPN7 Mouse Monoclonal Antibody [Clone ID: OTI3B10]

Product data:

Product Type:	Primary Antibodies
Clone Name:	OTI3B10
Applications:	IF, WB
Recommended Dilution:	WB 1:500~2000, IF 1:100
Reactivity:	Human, Dog, Rat, Mouse
Host:	Mouse
Isotype:	IgG2b
Clonality:	Monoclonal
Immunogen:	Full length human recombinant protein of human PTPN7(NP_542155) produced in HEK293T cell.
Formulation:	PBS (pH 7.3) containing 1% BSA, 50% glycerol and 0.02% sodium azide.
Concentration:	0.72 mg/ml
Purification:	Purified from mouse ascites fluids or tissue culture supernatant by affinity chromatography (protein A/G)
Conjugation:	Unconjugated
Storage:	Store at -20°C as received.
Stability:	Stable for 12 months from date of receipt.
Predicted Protein Size:	44.8 kDa
Gene Name:	protein tyrosine phosphatase non-receptor type 7
Database Link:	NP_542155 Entrez Gene 246781 Rat Entrez Gene 320139 Mouse Entrez Gene 607227 Dog Entrez Gene 5778 Human P35236



[View online »](#)

Background:

The protein encoded by this gene is a member of the protein tyrosine phosphatase (PTP) family. PTPs are known to be signaling molecules that regulate a variety of cellular processes including cell growth, differentiation, mitotic cycle, and oncogenic transformation. This gene is preferentially expressed in a variety of hematopoietic cells, and is an early response gene in lymphokine stimulated cells. The non-catalytic N-terminus of this PTP can interact with MAP kinases and suppress the MAP kinase activities. This PTP was shown to be involved in the regulation of T cell antigen receptor (TCR) signaling, which was thought to function through dephosphorylating the molecules related to MAP kinase pathway. Multiple alternatively spliced transcript variants have been found for this gene. [provided by RefSeq]

Synonyms:

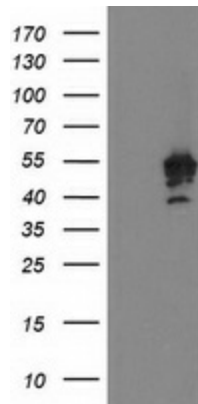
BPTP-4; HEPTP; LC-PTP; LPTP; PTPNI

Protein Families:

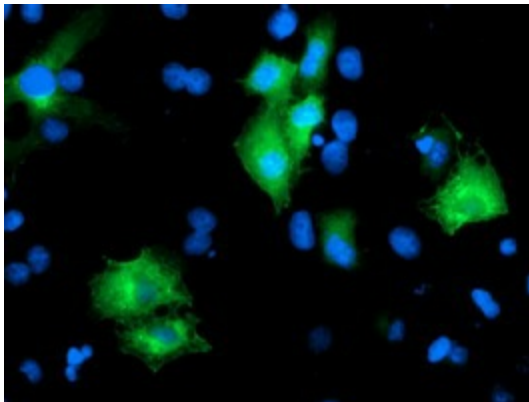
Druggable Genome, Phosphatase

Protein Pathways:

MAPK signaling pathway

Product images:

HEK293T cells were transfected with the pCMV6-ENTRY control (Cat# [PS100001], Left lane) or pCMV6-ENTRY PTPN7 (Cat# [RC216254], Right lane) cDNA for 48 hrs and lysed. Equivalent amounts of cell lysates (5 ug per lane) were separated by SDS-PAGE and immunoblotted with anti-PTPN7 (Cat# [TA503714]). Positive lysates [LY409137] (100ug) and [LC409137] (20ug) can be purchased separately from OriGene.



Anti-PTPN7 mouse monoclonal antibody ([TA503714]) immunofluorescent staining of COS7 cells transiently transfected by pCMV6-ENTRY PTPN7 ([RC216254]).