

## Product datasheet for **TA503705BM**

### **PDE6 gamma (PDE6G) Mouse Monoclonal Antibody (HRP conjugated) [Clone ID: OTI1H7]**

#### **Product data:**

<b>Product Type:</b>	Primary Antibodies
<b>Clone Name:</b>	OTI1H7
<b>Applications:</b>	WB
<b>Recommended Dilution:</b>	WB 1:2000
<b>Reactivity:</b>	Human, Mouse, Rat
<b>Host:</b>	Mouse
<b>Isotype:</b>	IgG2a
<b>Clonality:</b>	Monoclonal
<b>Immunogen:</b>	Full length human recombinant protein of human PDE6G(NP_002593) produced in HEK293T cell.
<b>Formulation:</b>	PBS (pH 7.3) containing 1% BSA, 50% glycerol.
<b>Concentration:</b>	0.5 mg/ml
<b>Purification:</b>	Purified from mouse ascites fluids or tissue culture supernatant by affinity chromatography (protein A/G)
<b>Conjugation:</b>	HRP
<b>Storage:</b>	Store at -20°C as received.
<b>Stability:</b>	Stable for 12 months from date of receipt.
<b>Predicted Protein Size:</b>	9.5 kDa
<b>Gene Name:</b>	phosphodiesterase 6G
<b>Database Link:</b>	<a href="#">NP_002593</a> <a href="#">Entrez Gene 5148 Human</a> <a href="#">P18545</a>
<b>Background:</b>	This gene encodes the gamma subunit of cyclic GMP-phosphodiesterase, which is composed of alpha- and beta- catalytic subunits and two identical, inhibitory gamma subunits. This gene is expressed in rod photoreceptors and functions in the phototransduction signaling cascade. It is also expressed in a variety of other tissues, and has been shown to regulate the c-Src protein kinase and G-protein-coupled receptor kinase 2. Alternative splicing results in multiple transcript variants. [provided by RefSeq]

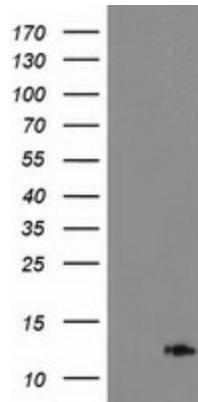


[View online »](#)

**Synonyms:** PDEG; RP57

**Protein Families:** Druggable Genome

**Protein Pathways:** Progesterone-mediated oocyte maturation, Purine metabolism

**Product images:**

HEK293T cells were transfected with the pCMV6-ENTRY control (Left lane) or pCMV6-ENTRY PDE6G ([RC216236], Right lane) cDNA for 48 hrs and lysed. Equivalent amounts of cell lysates (5 ug per lane) were separated by SDS-PAGE and immunoblotted with anti-PDE6G. Positive lysates [LY419220] (100ug) and [LC419220] (20ug) can be purchased separately from OriGene.