

## Product datasheet for **TA503689AM**

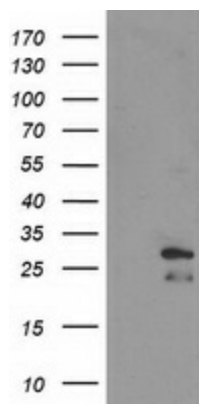
### ERAS Mouse Monoclonal Antibody (Biotin conjugated) [Clone ID: OTI2C6]

#### Product data:

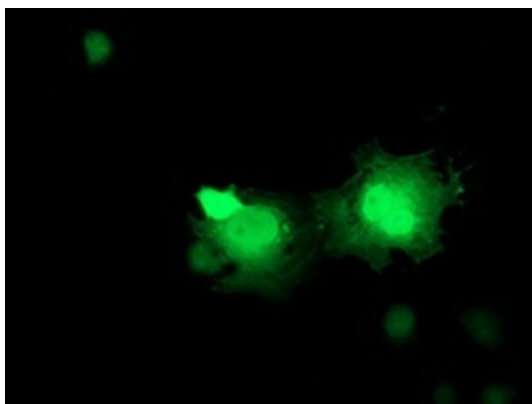
Product Type:	Primary Antibodies
Clone Name:	OTI2C6
Applications:	IF, WB
Recommended Dilution:	WB 1:2000, IF 1:100
Reactivity:	Human
Host:	Mouse
Isotype:	IgG2b
Clonality:	Monoclonal
Immunogen:	Full length human recombinant protein of human ERAS(NP_853510) produced in HEK293T cell.
Formulation:	PBS (pH 7.3) containing 1% BSA, 50% glycerol and 0.02% sodium azide.
Concentration:	0.5 mg/ml
Purification:	Purified from mouse ascites fluids or tissue culture supernatant by affinity chromatography (protein A/G)
Conjugation:	Biotin
Storage:	Store at -20°C as received.
Stability:	Stable for 12 months from date of receipt.
Predicted Protein Size:	25.1 kDa
Gene Name:	ES cell expressed Ras
Database Link:	<a href="#">NP_853510</a> <a href="#">Entrez Gene 3266 Human</a> <a href="#">Q7Z444</a>
Synonyms:	HRAS2; HRASP
Protein Families:	Druggable Genome



[View online »](#)

**Product images:**

HEK293T cells were transfected with the pCMV6-ENTRY control (Cat# [PS100001], Left lane) or pCMV6-ENTRY ERAS (Cat# [RC210965], Right lane) cDNA for 48 hrs and lysed. Equivalent amounts of cell lysates (5 ug per lane) were separated by SDS-PAGE and immunoblotted with anti-ERAS (Cat# [TA503689]). Positive lysates [LY405694] (100ug) and [LC405694] (20ug) can be purchased separately from OriGene.



Anti-ERAS mouse monoclonal antibody ([TA503689]) immunofluorescent staining of COS7 cells transiently transfected by pCMV6-ENTRY ERAS ([RC210965]).