

Product datasheet for **TA503688AM**

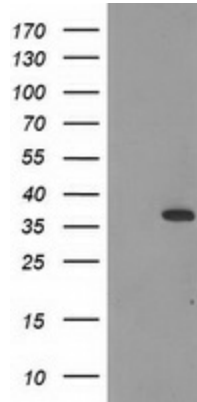
CNN2 Mouse Monoclonal Antibody (Biotin conjugated) [Clone ID: OTI2B5]

Product data:

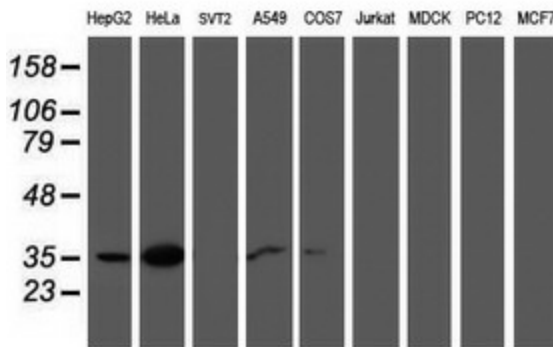
Product Type:	Primary Antibodies
Clone Name:	OTI2B5
Applications:	IF, IHC, WB
Recommended Dilution:	WB 1:500~2000, IHC 1:150, IF 1:100
Reactivity:	Human, Monkey, Mouse, Rat
Host:	Mouse
Isotype:	IgG1
Clonality:	Monoclonal
Immunogen:	Full length human recombinant protein of human CNN2(NP_004359) produced in HEK293T cell.
Concentration:	0.5 mg/ml
Purification:	Purified from mouse ascites fluids or tissue culture supernatant by affinity chromatography (protein A/G)
Conjugation:	Biotin
Storage:	Store at -20°C as received.
Stability:	Stable for 12 months from date of receipt.
Predicted Protein Size:	33.5 kDa
Gene Name:	calponin 2
Database Link:	NP_004359 Entrez Gene 12798 Mouse Entrez Gene 690976 Rat Entrez Gene 721164 Monkey Entrez Gene 1265 Human Q99439
Background:	The protein encoded by this gene, which can bind actin, calmodulin, troponin C, and tropomyosin, may function in the structural organization of actin filaments. The encoded protein could play a role in smooth muscle contraction and cell adhesion. Two transcript variants encoding different isoforms have been found for this gene. [provided by RefSeq]
Synonyms:	calponin 2; calponin H2; neutral calponin; smooth muscle



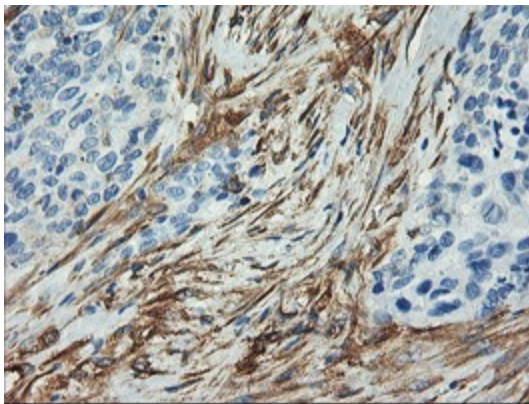
[View online »](#)

Product images:


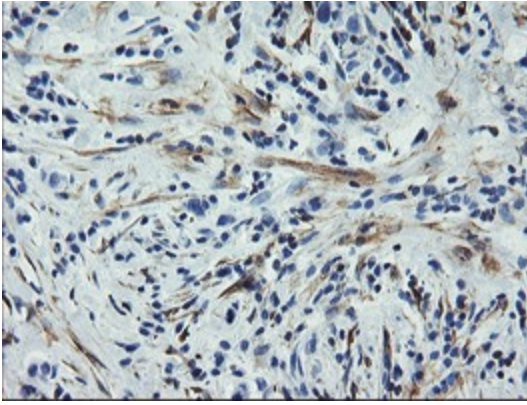
HEK293T cells were transfected with the pCMV6-ENTRY control (Cat# [PS100001], Left lane) or pCMV6-ENTRY CNN2 (Cat# [RC221104], Right lane) cDNA for 48 hrs and lysed. Equivalent amounts of cell lysates (5 ug per lane) were separated by SDS-PAGE and immunoblotted with anti-CNN2(Cat# [TA503688]). Positive lysates [LY418024] (100ug) and [LC418024] (20ug) can be purchased separately from OriGene.



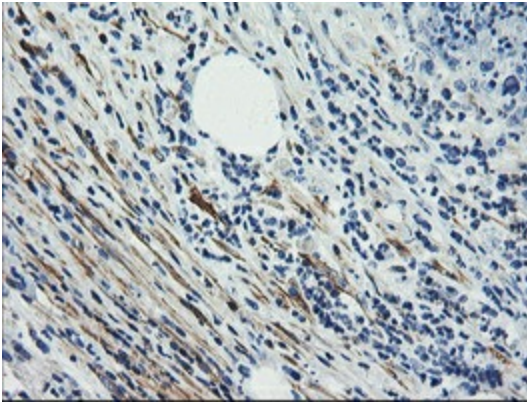
Western blot analysis of extracts (35ug) from 9 different cell lines by using anti-CNN2 monoclonal antibody.



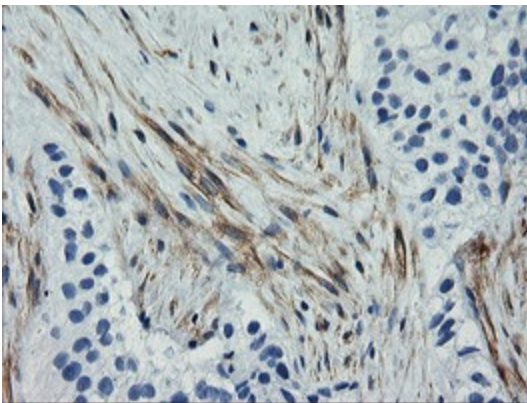
Immunohistochemical staining of paraffin-embedded Adenocarcinoma of Human breast tissue using anti-CNN2 mouse monoclonal antibody. (Heat-induced epitope retrieval by 10mM citric buffer, pH6.0, 100°C for 10min, [TA503688])



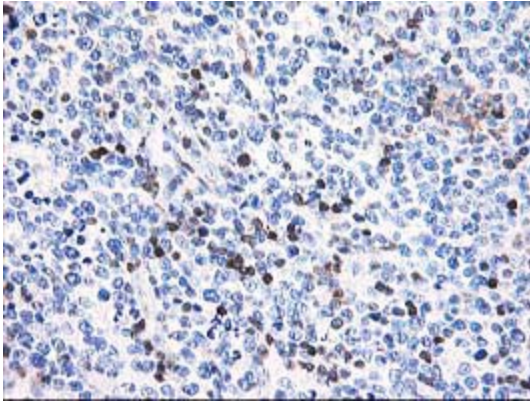
Immunohistochemical staining of paraffin-embedded Carcinoma of Human lung tissue using anti-CNN2 mouse monoclonal antibody. (Heat-induced epitope retrieval by 10mM citric buffer, pH6.0, 100°C for 10min, [TA503688])



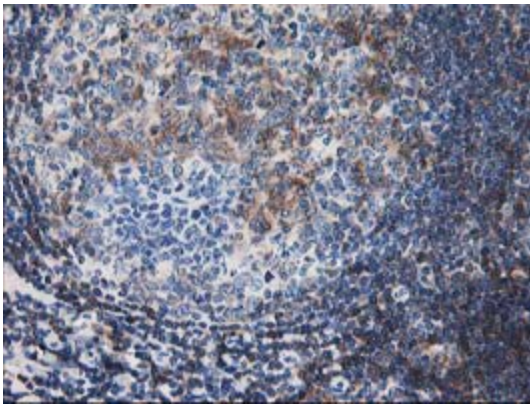
Immunohistochemical staining of paraffin-embedded Carcinoma of Human pancreas tissue using anti-CNN2 mouse monoclonal antibody. (Heat-induced epitope retrieval by 10mM citric buffer, pH6.0, 100°C for 10min, [TA503688])



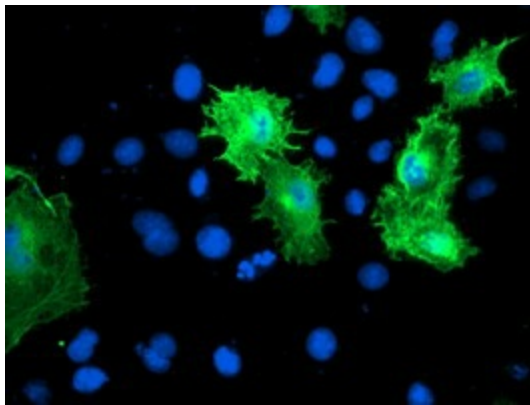
Immunohistochemical staining of paraffin-embedded Carcinoma of Human bladder tissue using anti-CNN2 mouse monoclonal antibody. (Heat-induced epitope retrieval by 10mM citric buffer, pH6.0, 100°C for 10min, [TA503688])



Immunohistochemical staining of paraffin-embedded Human lymphoma tissue using anti-CNN2 mouse monoclonal antibody. (Heat-induced epitope retrieval by 10mM citric buffer, pH6.0, 100°C for 10min, [TA503688])



Immunohistochemical staining of paraffin-embedded Human tonsil within the normal limits using anti-CNN2 mouse monoclonal antibody. (Heat-induced epitope retrieval by 10mM citric buffer, pH6.0, 100°C for 10min, [TA503688])



Anti-CNN2 mouse monoclonal antibody ([TA503688]) immunofluorescent staining of COS7 cells transiently transfected by pCMV6-ENTRY CNN2 ([RC221104]).