

## Product datasheet for **TA503673M**

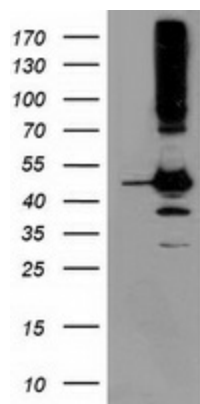
### **SERPINB13 Mouse Monoclonal Antibody [Clone ID: OTI2F5]**

#### **Product data:**

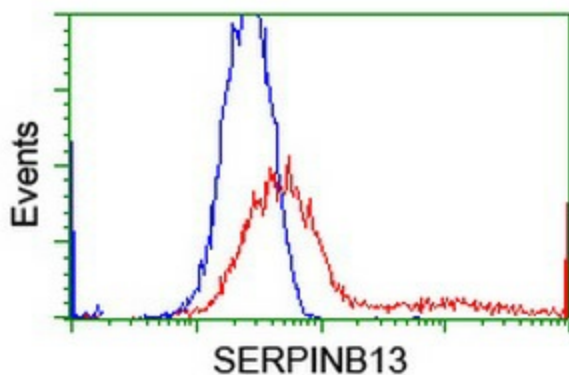
Product Type:	Primary Antibodies
Clone Name:	OTI2F5
Applications:	FC, WB
Recommended Dilution:	WB 1:2000, FLOW 1:100
Reactivity:	Human
Host:	Mouse
Isotype:	IgG2a
Clonality:	Monoclonal
Immunogen:	Full length human recombinant protein of human SERPINB13(NP_036529) produced in HEK293T cell.
Formulation:	PBS (pH 7.3) containing 1% BSA, 50% glycerol and 0.02% sodium azide.
Concentration:	0.87 mg/ml
Purification:	Purified from mouse ascites fluids or tissue culture supernatant by affinity chromatography (protein A/G)
Conjugation:	Unconjugated
Storage:	Store at -20°C as received.
Stability:	Stable for 12 months from date of receipt.
Predicted Protein Size:	44.1 kDa
Gene Name:	serpin family B member 13
Database Link:	<a href="#">NP_036529</a> <a href="#">Entrez Gene 5275 Human</a> <a href="#">Q9UIV8</a>
Synonyms:	headpin; HSHUR7SEQ; HUR7; PI13
Protein Families:	Druggable Genome, Transmembrane


[View online »](#)

## Product images:



HEK293T cells were transfected with the pCMV6-ENTRY control (Left lane) or pCMV6-ENTRY SERPINB13 ([RC211032], Right lane) cDNA for 48 hrs and lysed. Equivalent amounts of cell lysates (5 ug per lane) were separated by SDS-PAGE and immunoblotted with anti-SERPINB13. Positive lysates [LY415794] (100ug) and [LC415794] (20ug) can be purchased separately from OriGene.



HEK293T cells transfected with either [RC211032] overexpress plasmid (Red) or empty vector control plasmid (Blue) were immunostained by anti-SERPINB13 antibody ([TA503673]), and then analyzed by flow cytometry.