

Product datasheet for **TA503668**

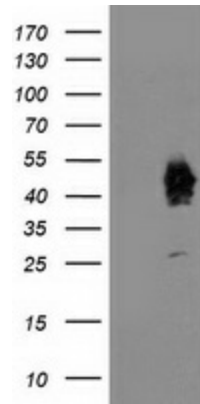
ASCC1 Mouse Monoclonal Antibody [Clone ID: OTI2D7]

Product data:

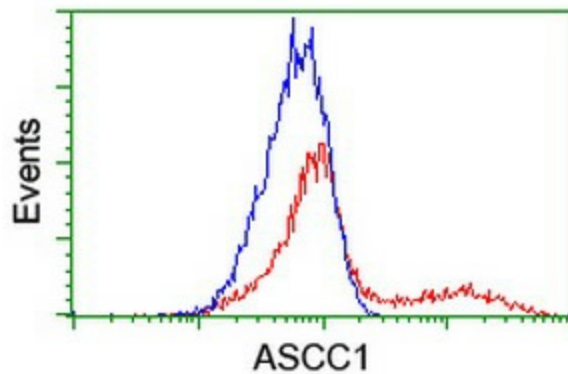
Product Type:	Primary Antibodies
Clone Name:	OTI2D7
Applications:	FC, WB
Recommended Dilution:	WB 1:2000, FLOW 1:100
Reactivity:	Human, Mouse, Rat
Host:	Mouse
Isotype:	IgG1
Clonality:	Monoclonal
Immunogen:	Full length human recombinant protein of human ASCC1(NP_057031) produced in HEK293T cell.
Formulation:	PBS (pH 7.3) containing 1% BSA, 50% glycerol and 0.02% sodium azide.
Concentration:	0.33 mg/ml
Purification:	Purified from mouse ascites fluids or tissue culture supernatant by affinity chromatography (protein A/G)
Conjugation:	Unconjugated
Storage:	Store at -20°C as received.
Stability:	Stable for 12 months from date of receipt.
Predicted Protein Size:	41 kDa
Gene Name:	activating signal cointegrator 1 complex subunit 1
Database Link:	NP_057031 Entrez Gene 69090 Mouse Entrez Gene 294512 Rat Entrez Gene 51008 Human Q8N9N2
Synonyms:	ASC1p50; CGI-18; RP11-150D20.4



[View online »](#)

Product images:

HEK293T cells were transfected with the pCMV6-ENTRY control (Left lane) or pCMV6-ENTRY ASCC1 ([RC201872], Right lane) cDNA for 48 hrs and lysed. Equivalent amounts of cell lysates (5 ug per lane) were separated by SDS-PAGE and immunoblotted with anti-ASCC1. Positive lysates [LY414300] (100ug) and [LC414300] (20ug) can be purchased separately from OriGene.



HEK293T cells transfected with either [RC201872] overexpress plasmid (Red) or empty vector control plasmid (Blue) were immunostained by anti-ASCC1 antibody (TA503668), and then analyzed by flow cytometry.