

## Product datasheet for **TA503666AM**

### Ribophorin I (RPN1) Mouse Monoclonal Antibody (Biotin conjugated) [Clone ID: OTI2E3]

#### Product data:

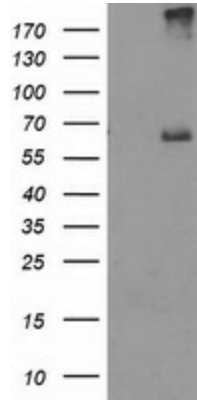
Product Type:	Primary Antibodies
Clone Name:	OTI2E3
Applications:	FC, IHC, WB
Recommended Dilution:	WB 1:500~2000, IHC 1:150, FLOW 1:100
Reactivity:	Human, Dog, Mouse, Rat
Host:	Mouse
Isotype:	IgG1
Clonality:	Monoclonal
Immunogen:	Full length human recombinant protein of human RPN1(NP_002941) produced in HEK293T cell.
Formulation:	PBS (pH 7.3) containing 1% BSA, 50% glycerol and 0.02% sodium azide.
Concentration:	0.5 mg/ml
Purification:	Purified from mouse ascites fluids or tissue culture supernatant by affinity chromatography (protein A/G)
Conjugation:	Biotin
Storage:	Store at -20°C as received.
Stability:	Stable for 12 months from date of receipt.
Predicted Protein Size:	66.2 kDa
Gene Name:	ribophorin I
Database Link:	<a href="#">NP_002941</a> <a href="#">Entrez Gene 25596 Rat</a> <a href="#">Entrez Gene 476516 Dog</a> <a href="#">Entrez Gene 6184 Human</a> <a href="#">P04843</a>
Background:	This gene encodes a type I integral membrane protein found only in the rough endoplasmic reticulum. The encoded protein is part of an N-oligosaccharyl transferase complex that links high mannose oligosaccharides to asparagine residues found in the Asn-X-Ser/Thr consensus motif of nascent polypeptide chains. This protein forms part of the regulatory subunit of the 26S proteasome and may mediate binding of ubiquitin-like domains to this proteasome. [provided by RefSeq]



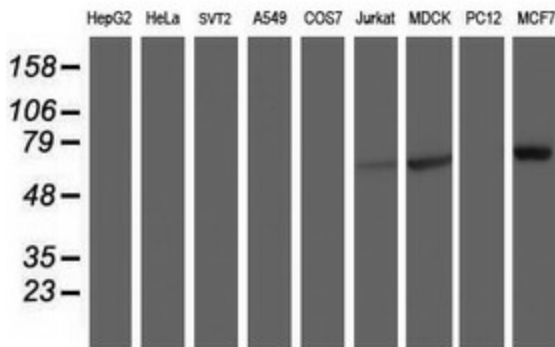
[View online »](#)

**Synonyms:** OST1; RBPH1  
**Protein Families:** Transmembrane  
**Protein Pathways:** Metabolic pathways, N-Glycan biosynthesis

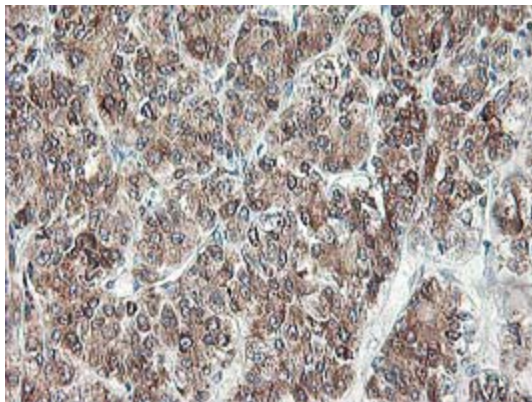
**Product images:**



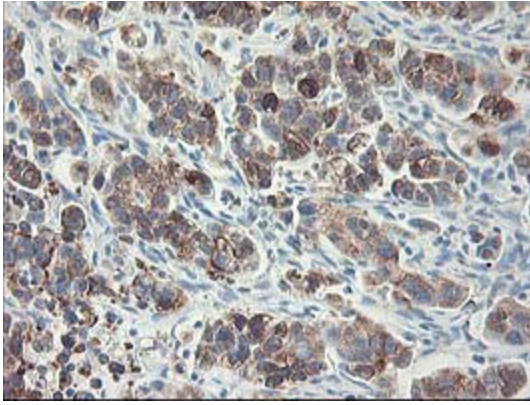
HEK293T cells were transfected with the pCMV6-ENTRY control (Left lane) or pCMV6-ENTRY RPN1 ([RC201554], Right lane) cDNA for 48 hrs and lysed. Equivalent amounts of cell lysates (5 ug per lane) were separated by SDS-PAGE and immunoblotted with anti-RPN1. Positive lysates [LY418997] (100ug) and [LC418997] (20ug) can be purchased separately from OriGene.



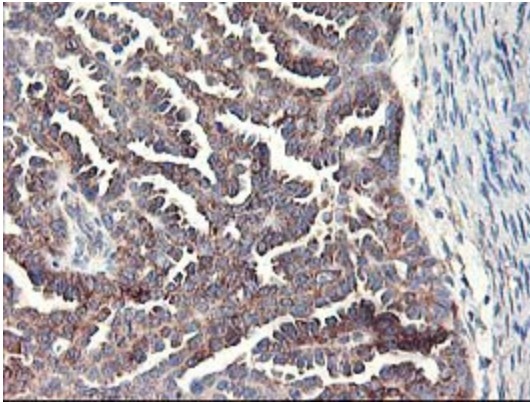
Western blot analysis of extracts (35ug) from 9 different cell lines by using anti-RPN1 monoclonal antibody.



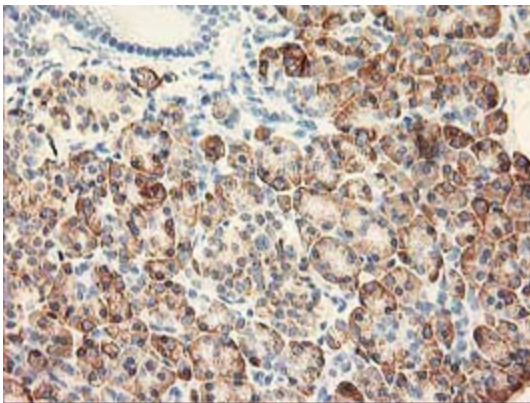
Immunohistochemical staining of paraffin-embedded Carcinoma of Human liver tissue using anti-RPN1 mouse monoclonal antibody. (Heat-induced epitope retrieval by 10mM citric buffer, pH6.0, 100°C for 10min, [TA503666])



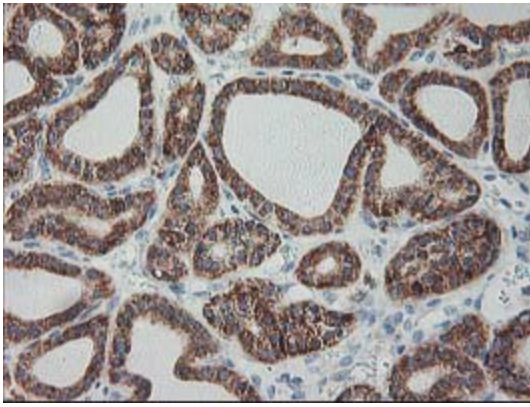
Immunohistochemical staining of paraffin-embedded Carcinoma of Human lung tissue using anti-RPN1 mouse monoclonal antibody. (Heat-induced epitope retrieval by 10mM citric buffer, pH6.0, 100°C for 10min, [TA503666])



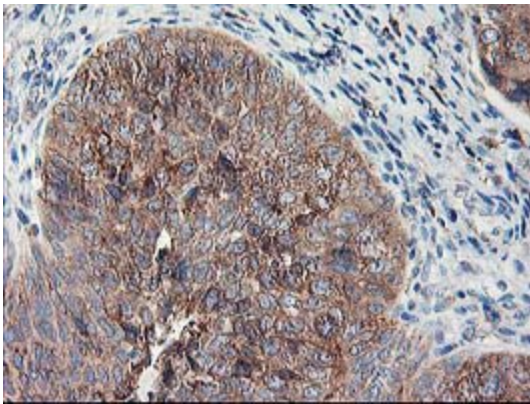
Immunohistochemical staining of paraffin-embedded Adenocarcinoma of Human ovary tissue using anti-RPN1 mouse monoclonal antibody. (Heat-induced epitope retrieval by 10mM citric buffer, pH6.0, 100°C for 10min, [TA503666])



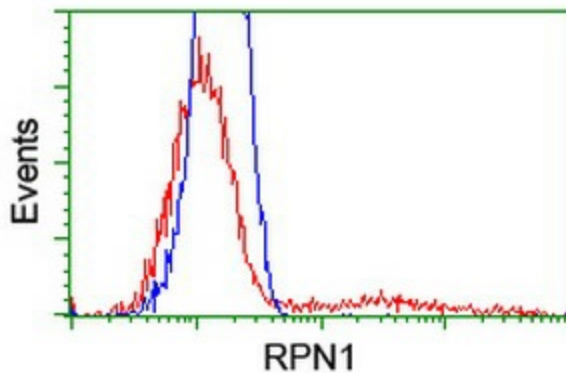
Immunohistochemical staining of paraffin-embedded Human pancreas tissue within the normal limits using anti-RPN1 mouse monoclonal antibody. (Heat-induced epitope retrieval by 10mM citric buffer, pH6.0, 100°C for 10min, [TA503666])



Immunohistochemical staining of paraffin-embedded Carcinoma of Human thyroid tissue using anti-RPN1 mouse monoclonal antibody. (Heat-induced epitope retrieval by 10mM citric buffer, pH6.0, 100°C for 10min, [TA503666])



Immunohistochemical staining of paraffin-embedded Carcinoma of Human bladder tissue using anti-RPN1 mouse monoclonal antibody. (Heat-induced epitope retrieval by 10mM citric buffer, pH6.0, 100°C for 10min, [TA503666])



HEK293T cells transfected with either [RC201554] overexpress plasmid (Red) or empty vector control plasmid (Blue) were immunostained by anti-RPN1 antibody ([TA503666]), and then analyzed by flow cytometry.