

Product datasheet for **TA503640BM**

DPP10 Mouse Monoclonal Antibody (HRP conjugated) [Clone ID: OTI2A5]

Product data:

Product Type:	Primary Antibodies
Clone Name:	OTI2A5
Applications:	FC, IHC, WB
Recommended Dilution:	WB 1:2000, IHC 1:150, FLOW 1:100
Reactivity:	Human, Mouse, Rat
Host:	Mouse
Isotype:	IgG1
Clonality:	Monoclonal
Immunogen:	Full length human recombinant protein of human DPP10(NP_065919) produced in HEK293T cell.
Formulation:	PBS (pH 7.3) containing 1% BSA, 50% glycerol.
Concentration:	0.5 mg/ml
Purification:	Purified from mouse ascites fluids or tissue culture supernatant by affinity chromatography (protein A/G)
Conjugation:	HRP
Storage:	Store at -20°C as received.
Stability:	Stable for 12 months from date of receipt.
Predicted Protein Size:	90.7 kDa
Gene Name:	dipeptidyl peptidase like 10
Database Link:	NP_065919 Entrez Gene 269109 Mouse Entrez Gene 363972 Rat Entrez Gene 57628 Human Q8N608



[View online »](#)

Background:

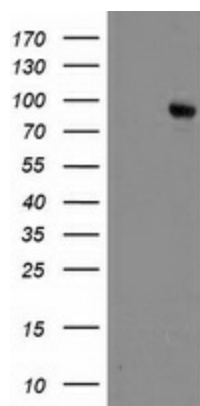
This gene encodes a single-pass type II membrane protein that is a member of the S9B family in clan SC of the serine proteases. This protein has no detectable protease activity, most likely due to the absence of the conserved serine residue normally present in the catalytic domain of serine proteases. However, it does bind specific voltage-gated potassium channels and alters their expression and biophysical properties. Mutations in this gene have been associated with asthma. Alternate transcriptional splice variants, encoding different isoforms, have been characterized. [provided by RefSeq]

Synonyms:

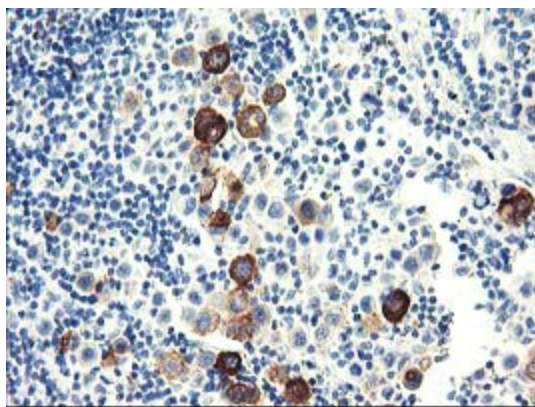
DPL2; DPPY; DPRP-3; DPRP3

Protein Families:

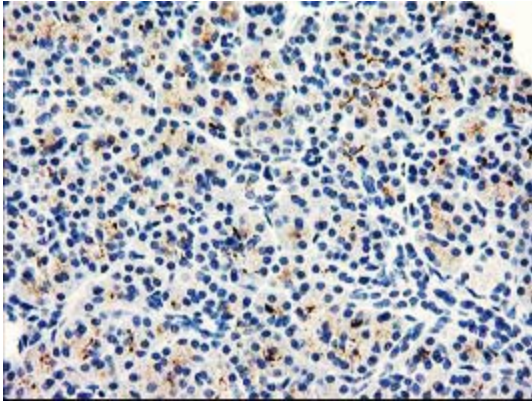
Druggable Genome, Protease, Transmembrane

Product images:

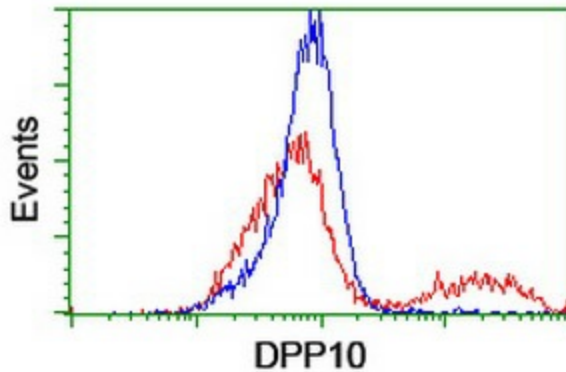
HEK293T cells were transfected with the pCMV6-ENTRY control (Left lane) or pCMV6-ENTRY DPP10 [RC205435], Right lane) cDNA for 48 hrs and lysed. Equivalent amounts of cell lysates (5 ug per lane) were separated by SDS-PAGE and immunoblotted with anti-DPP10. Positive lysates [LY412236] (100ug) and [LC412236] (20ug) can be purchased separately from OriGene.



Immunohistochemical staining of paraffin-embedded Carcinoma of Human lung tissue using anti-DPP10 mouse monoclonal antibody. (Heat-induced epitope retrieval by 10mM citric buffer, pH6.0, 100°C for 10min, [TA503640])



Immunohistochemical staining of paraffin-embedded Human pancreas tissue within the normal limits using anti-DPP10 mouse monoclonal antibody. (Heat-induced epitope retrieval by 10mM citric buffer, pH6.0, 100°C for 10min, [TA503640])



HEK293T cells transfected with either [RC205435] overexpress plasmid (Red) or empty vector control plasmid (Blue) were immunostained by anti-DPP10 antibody ([TA503640]), and then analyzed by flow cytometry.