

## Product datasheet for **TA503636BM**

### Cytochrome p450 2J2 (CYP2J2) Mouse Monoclonal Antibody (HRP conjugated) [Clone ID: OTI5C5]

#### Product data:

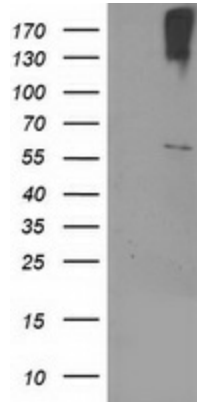
Product Type:	Primary Antibodies
Clone Name:	OTI5C5
Applications:	IHC, WB
Recommended Dilution:	WB 1:2000, IHC 1:150
Reactivity:	Human
Host:	Mouse
Isotype:	IgG2b
Clonality:	Monoclonal
Immunogen:	Full length human recombinant protein of human CYP2J2(NP_000766) produced in HEK293T cell.
Formulation:	PBS (pH 7.3) containing 1% BSA, 50% glycerol.
Concentration:	0.5 mg/ml
Purification:	Purified from mouse ascites fluids or tissue culture supernatant by affinity chromatography (protein A/G)
Conjugation:	HRP
Storage:	Store at -20°C as received.
Stability:	Stable for 12 months from date of receipt.
Predicted Protein Size:	57.4 kDa
Gene Name:	cytochrome P450 family 2 subfamily J member 2
Database Link:	<a href="#">NP_000766</a> <a href="#">Entrez Gene 1573 Human P51589</a>
Background:	This gene encodes a member of the cytochrome P450 superfamily of enzymes. The cytochrome P450 proteins are monooxygenases which catalyze many reactions involved in drug metabolism and synthesis of cholesterol, steroids and other lipids. This protein localizes to the endoplasmic reticulum and is thought to be the predominant enzyme responsible for epoxidation of endogenous arachidonic acid in cardiac tissue. [provided by RefSeq]



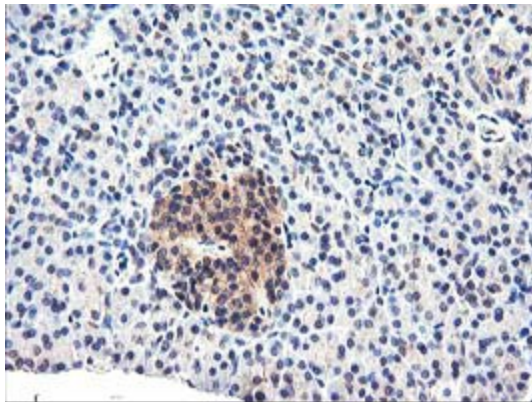
[View online »](#)

**Synonyms:** CPJ2  
**Protein Families:** Druggable Genome, P450, Transmembrane  
**Protein Pathways:** Arachidonic acid metabolism, Linoleic acid metabolism, Metabolic pathways

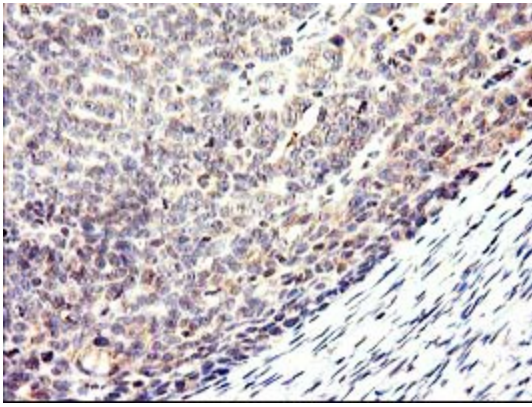
**Product images:**



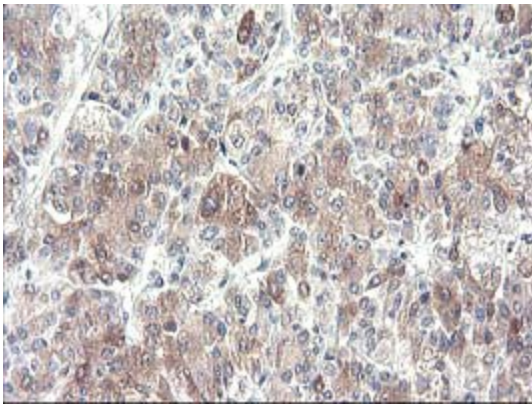
HEK293T cells were transfected with the pCMV6-ENTRY control (Cat# [PS100001], Left lane) or pCMV6-ENTRY CYP2J2 (Cat# [RC207417], Right lane) cDNA for 48 hrs and lysed. Equivalent amounts of cell lysates (5 ug per lane) were separated by SDS-PAGE and immunoblotted with anti-CYP2J2(Cat# [TA503636]). Positive lysates [LY424525] (100ug) and [LC424525] (20ug) can be purchased separately from OriGene.



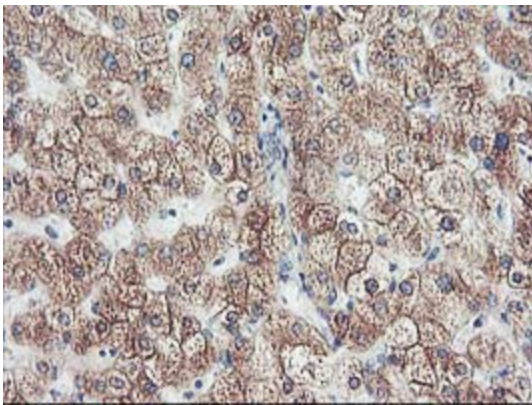
Immunohistochemical staining of paraffin-embedded Human pancreas tissue within the normal limits using anti-CYP2J2 mouse monoclonal antibody. (Heat-induced epitope retrieval by 10mM citric buffer, pH6.0, 100°C for 10min, [TA503636])



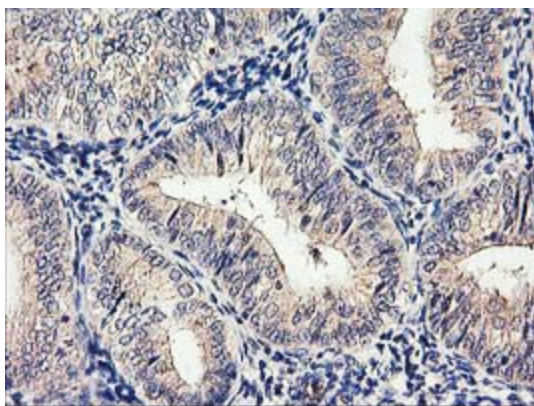
Immunohistochemical staining of paraffin-embedded Adenocarcinoma of Human ovary tissue using anti-CYP2J2 mouse monoclonal antibody. (Heat-induced epitope retrieval by 10mM citric buffer, pH6.0, 100°C for 10min, [TA503636])



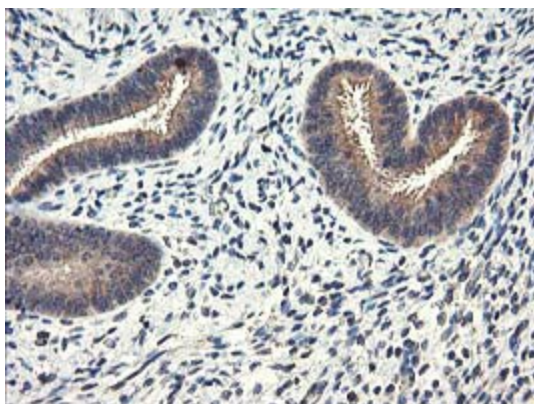
Immunohistochemical staining of paraffin-embedded Carcinoma of Human liver tissue using anti-CYP2J2 mouse monoclonal antibody. (Heat-induced epitope retrieval by 10mM citric buffer, pH6.0, 100°C for 10min, [TA503636])



Immunohistochemical staining of paraffin-embedded Human liver tissue within the normal limits using anti-CYP2J2 mouse monoclonal antibody. (Heat-induced epitope retrieval by 10mM citric buffer, pH6.0, 100°C for 10min, [TA503636])



Immunohistochemical staining of paraffin-embedded Adenocarcinoma of Human endometrium tissue using anti-CYP2J2 mouse monoclonal antibody. (Heat-induced epitope retrieval by 10mM citric buffer, pH6.0, 100°C for 10min, [TA503636])



Immunohistochemical staining of paraffin-embedded Human endometrium tissue within the normal limits using anti-CYP2J2 mouse monoclonal antibody. (Heat-induced epitope retrieval by 10mM citric buffer, pH6.0, 100°C for 10min, [TA503636])