

Product datasheet for **TA503631S**

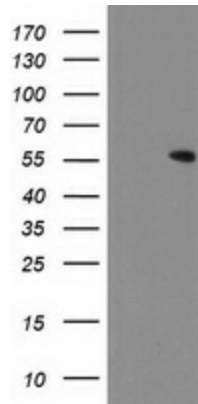
CNDP2 Mouse Monoclonal Antibody [Clone ID: OTI6D3]

Product data:

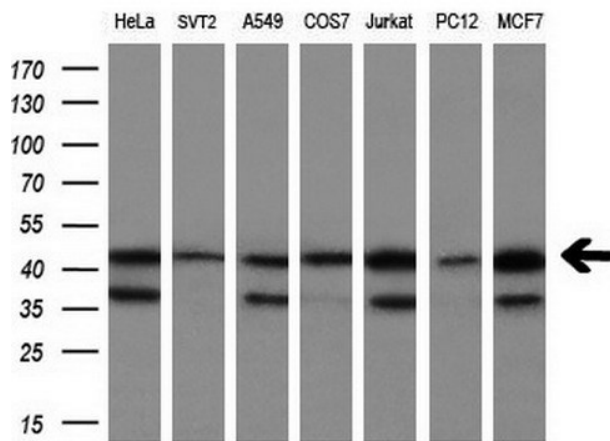
Product Type:	Primary Antibodies
Clone Name:	OTI6D3
Applications:	IF, IHC, WB
Recommended Dilution:	WB 1:500~2000, IHC 1:150, IF 1:100
Reactivity:	Human, Mouse, Rat
Host:	Mouse
Isotype:	IgG1
Clonality:	Monoclonal
Immunogen:	Full length human recombinant protein of human CNDP2(NP_060705) produced in HEK293T cell.
Formulation:	PBS (pH 7.3) containing 1% BSA, 50% glycerol and 0.02% sodium azide.
Concentration:	0.74 mg/ml
Purification:	Purified from mouse ascites fluids or tissue culture supernatant by affinity chromatography (protein A/G)
Conjugation:	Unconjugated
Storage:	Store at -20°C as received.
Stability:	Stable for 12 months from date of receipt.
Predicted Protein Size:	52.7 kDa
Gene Name:	carnosine dipeptidase 2
Database Link:	NP_060705 Entrez Gene 66054 Mouse Entrez Gene 291394 Rat Entrez Gene 55748 Human Q96KP4
Background:	CNDP2, also known as tissue carnosinase and peptidase A (EC 3.4.13.18), is a nonspecific dipeptidase rather than a selective carnosinase (Teufel et al., 2003 [PubMed 12473676]). [supplied by OMIM]
Synonyms:	CN2; CPGL; HEL-S-13; HsT2298; PEPA
Protein Families:	Protease



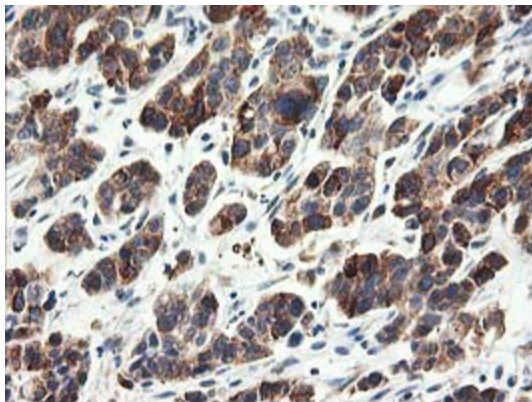
[View online »](#)

Product images:


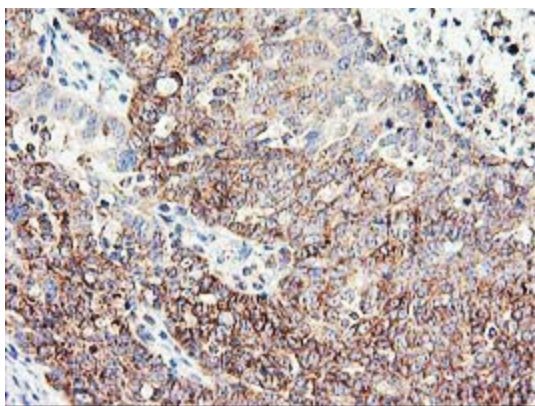
HEK293T cells were transfected with the pCMV6-ENTRY control (Left lane) or pCMV6-ENTRY CNDP2 ([RC200120], Right lane) cDNA for 48 hrs and lysed. Equivalent amounts of cell lysates (5 ug per lane) were separated by SDS-PAGE and immunoblotted with anti-CNDP2. Positive lysates [LY413215] (100ug) and [LC413215] (20ug) can be purchased separately from OriGene.



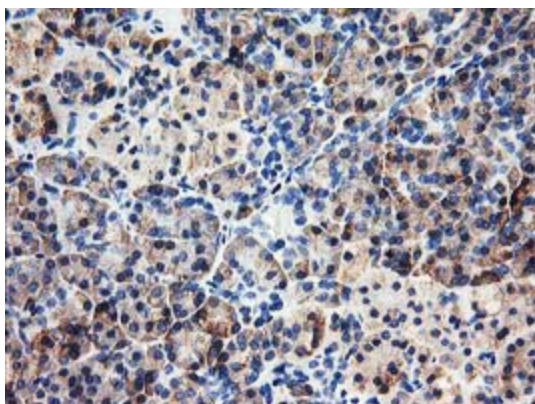
Western blot analysis of extracts (10ug) from 7 different cell lines by using anti-CNDP2 monoclonal antibody at 1:200 dilution.



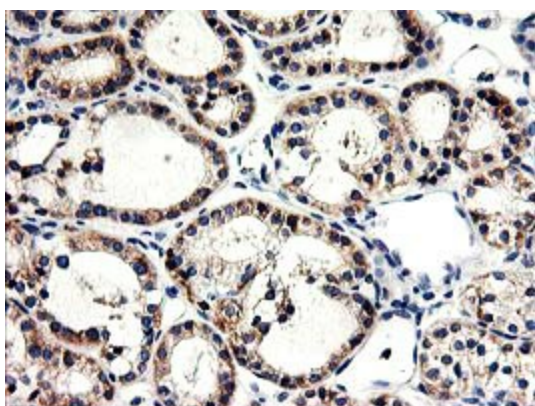
Immunohistochemical staining of paraffin-embedded Carcinoma of Human lung tissue using anti-CNDP2 mouse monoclonal antibody. (Heat-induced epitope retrieval by 10mM citric buffer, pH6.0, 100°C for 10min, [TA503631])



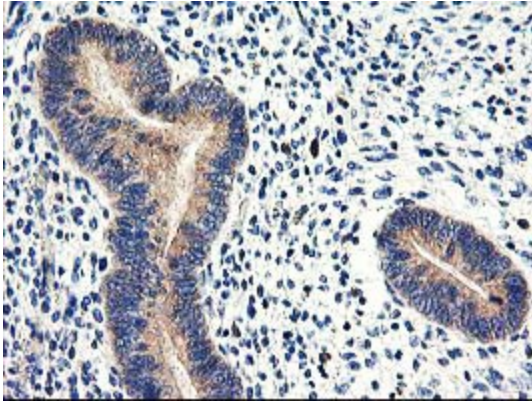
Immunohistochemical staining of paraffin-embedded Adenocarcinoma of Human ovary tissue using anti-CNDP2 mouse monoclonal antibody. (Heat-induced epitope retrieval by 10mM citric buffer, pH6.0, 100°C for 10min, [TA503631])



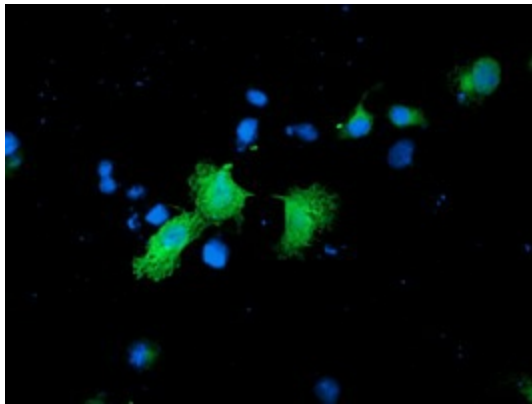
Immunohistochemical staining of paraffin-embedded Human pancreas tissue within the normal limits using anti-CNDP2 mouse monoclonal antibody. (Heat-induced epitope retrieval by 10mM citric buffer, pH6.0, 100°C for 10min, [TA503631])



Immunohistochemical staining of paraffin-embedded Carcinoma of Human thyroid tissue using anti-CNDP2 mouse monoclonal antibody. (Heat-induced epitope retrieval by 10mM citric buffer, pH6.0, 100°C for 10min, [TA503631])



Immunohistochemical staining of paraffin-embedded Human endometrium tissue within the normal limits using anti-CNDP2 mouse monoclonal antibody. (Heat-induced epitope retrieval by 10mM citric buffer, pH6.0, 100°C for 10min, [TA503631])



Anti-CNDP2 mouse monoclonal antibody ([TA503631]) immunofluorescent staining of COS7 cells transiently transfected by pCMV6-ENTRY CNDP2 ([RC200120]).