

## Product datasheet for **TA503631BM**

### CNDP2 Mouse Monoclonal Antibody (HRP conjugated) [Clone ID: OTI6D3]

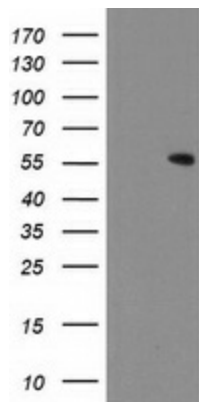
#### Product data:

|                         |  |
|-------------------------|--|
| Product Type:           | Primary Antibodies   |
| Clone Name:             | OTI6D3   |
| Applications:           | IF, IHC, WB  |
| Recommended Dilution:   | WB 1:500~2000, IHC 1:150, IF 1:100   |
| Reactivity:             | Human, Mouse, Rat  |
| Host:                   | Mouse  |
| Isotype:                | IgG1   |
| Clonality:              | Monoclonal   |
| Immunogen:              | Full length human recombinant protein of human CNDP2(NP_060705) produced in HEK293T cell.  |
| Formulation:            | PBS (pH 7.3) containing 1% BSA, 50% glycerol.  |
| Concentration:          | 0.5 mg/ml  |
| Purification:           | Purified from mouse ascites fluids or tissue culture supernatant by affinity chromatography (protein A/G)  |
| Conjugation:            | HRP  |
| Storage:                | Store at -20°C as received.  |
| Stability:              | Stable for 12 months from date of receipt.   |
| Predicted Protein Size: | 52.7 kDa   |
| Gene Name:              | carnosine dipeptidase 2  |
| Database Link:          | <a href="#">NP_060705</a><br><a href="#">Entrez Gene 66054 Mouse</a> <a href="#">Entrez Gene 291394 Rat</a> <a href="#">Entrez Gene 55748 Human</a><br><a href="#">Q96KP4</a>                        |
| Background:             | CNDP2, also known as tissue carnosinase and peptidase A (EC 3.4.13.18), is a nonspecific dipeptidase rather than a selective carnosinase (Teufel et al., 2003 [PubMed 12473676]). [supplied by OMIM] |
| Synonyms:               | CN2; CPGL; HEL-S-13; HsT2298; PEPA   |
| Protein Families:       | Protease   |

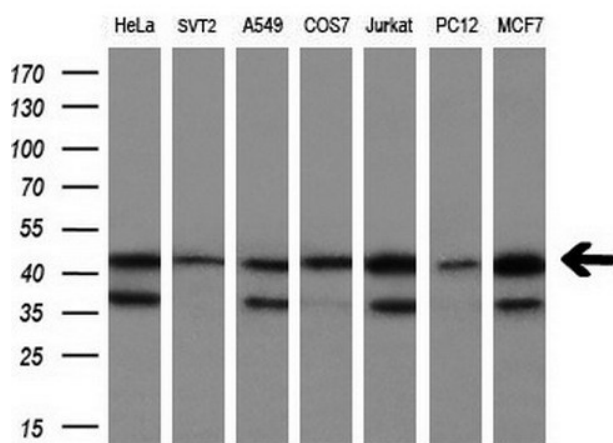


[View online »](#)

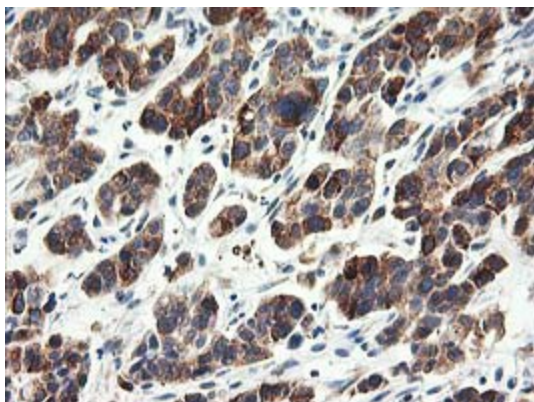
**Product images:**



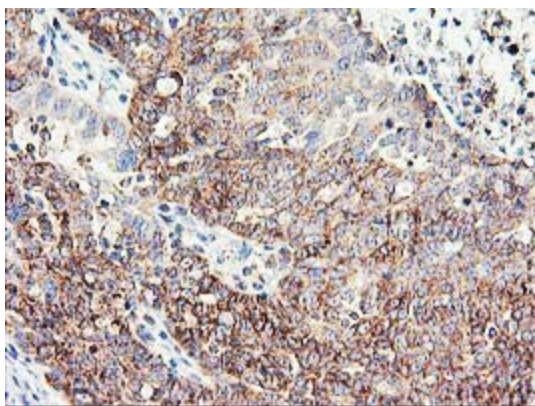
HEK293T cells were transfected with the pCMV6-ENTRY control (Left lane) or pCMV6-ENTRY CNDP2 ([RC200120], Right lane) cDNA for 48 hrs and lysed. Equivalent amounts of cell lysates (5 ug per lane) were separated by SDS-PAGE and immunoblotted with anti-CNDP2. Positive lysates [LY413215] (100ug) and [LC413215] (20ug) can be purchased separately from OriGene.



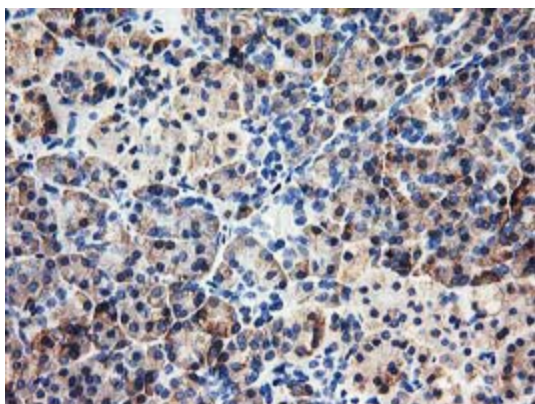
Western blot analysis of extracts (10ug) from 7 different cell lines by using anti-CNDP2 monoclonal antibody at 1:200 dilution.



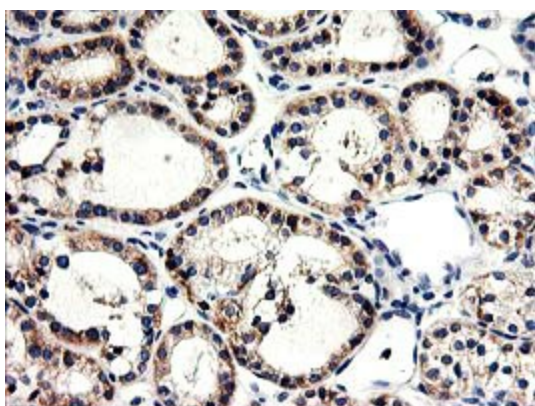
Immunohistochemical staining of paraffin-embedded Carcinoma of Human lung tissue using anti-CNDP2 mouse monoclonal antibody. (Heat-induced epitope retrieval by 10mM citric buffer, pH6.0, 100°C for 10min, [TA503631])



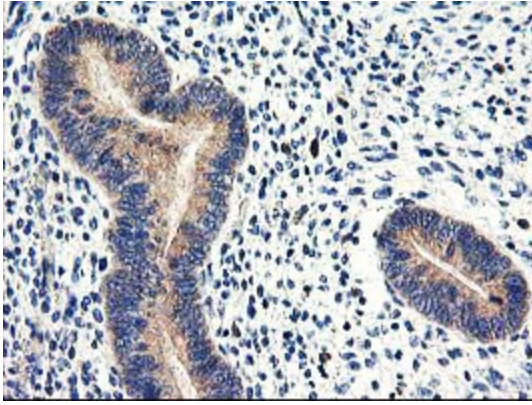
Immunohistochemical staining of paraffin-embedded Adenocarcinoma of Human ovary tissue using anti-CNDP2 mouse monoclonal antibody. (Heat-induced epitope retrieval by 10mM citric buffer, pH6.0, 100°C for 10min, [TA503631])



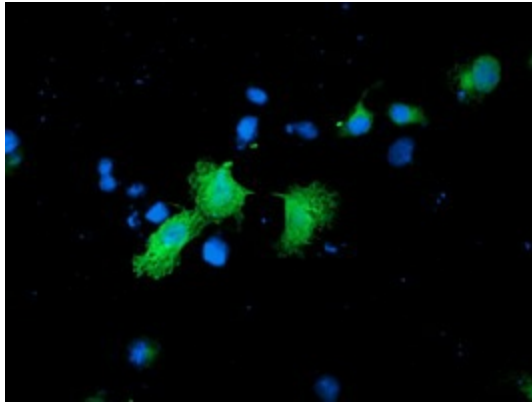
Immunohistochemical staining of paraffin-embedded Human pancreas tissue within the normal limits using anti-CNDP2 mouse monoclonal antibody. (Heat-induced epitope retrieval by 10mM citric buffer, pH6.0, 100°C for 10min, [TA503631])



Immunohistochemical staining of paraffin-embedded Carcinoma of Human thyroid tissue using anti-CNDP2 mouse monoclonal antibody. (Heat-induced epitope retrieval by 10mM citric buffer, pH6.0, 100°C for 10min, [TA503631])



Immunohistochemical staining of paraffin-embedded Human endometrium tissue within the normal limits using anti-CNDP2 mouse monoclonal antibody. (Heat-induced epitope retrieval by 10mM citric buffer, pH6.0, 100°C for 10min, [TA503631])



Anti-CNDP2 mouse monoclonal antibody ([TA503631]) immunofluorescent staining of COS7 cells transiently transfected by pCMV6-ENTRY CNDP2 ([RC200120]).