

Product datasheet for **TA503620S**

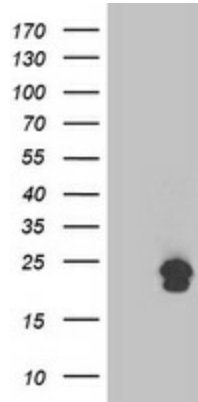
TMED1 Mouse Monoclonal Antibody [Clone ID: OTI7D2]

Product data:

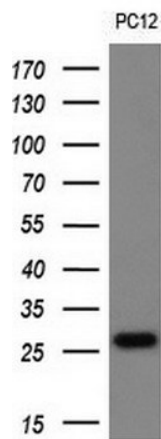
Product Type:	Primary Antibodies
Clone Name:	OTI7D2
Applications:	IF, WB
Recommended Dilution:	WB 1:500, IF 1:100
Reactivity:	Human, Mouse, Rat
Host:	Mouse
Isotype:	IgG1
Clonality:	Monoclonal
Immunogen:	Full length human recombinant protein of human TMED1(NP_006849) produced in HEK293T cell.
Formulation:	PBS (pH 7.3) containing 1% BSA, 50% glycerol and 0.02% sodium azide.
Concentration:	0.25 mg/ml
Purification:	Purified from mouse ascites fluids or tissue culture supernatant by affinity chromatography (protein A/G)
Conjugation:	Unconjugated
Storage:	Store at -20°C as received.
Stability:	Stable for 12 months from date of receipt.
Predicted Protein Size:	22.8 kDa
Gene Name:	transmembrane p24 trafficking protein 1
Database Link:	NP_006849 Entrez Gene 17083 Mouse Entrez Gene 315461 Rat Entrez Gene 11018 Human Q13445
Background:	The protein encoded by this gene was identified by its interaction with interleukin 1 receptor-like 1 (IL1RL1). This protein lacks any similarity to other interleukin 1 ligands. The functional significance of its interaction with IL1RL1 is not known. [provided by RefSeq, Jul 2008]
Synonyms:	Il1r1l1; IL1RL1LG; p24g1; Tp24
Protein Families:	Druggable Genome, Transmembrane



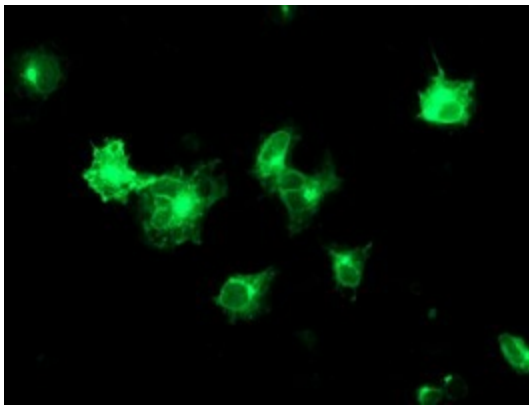
[View online »](#)

Product images:


HEK293T cells were transfected with the pCMV6-ENTRY control (Cat# [PS100001], Left lane) or pCMV6-ENTRY TMED1 (Cat# [RC200255], Right lane) cDNA for 48 hrs and lysed. Equivalent amounts of cell lysates (5 ug per lane) were separated by SDS-PAGE and immunoblotted with anti-TMED1 (Cat# [TA503620]). Positive lysates [LY402049] (100ug) and [LC402049] (20ug) can be purchased separately from OriGene.



Western blot analysis of extracts (10ug) from 1 cell line by using anti-TMED1 monoclonal antibody (1:200).



Western blot analysis of extracts (10ug) from PC12 cell line by using anti-TMED1 monoclonal antibody (1:200).