

Product datasheet for **TA503620**

TMED1 Mouse Monoclonal Antibody [Clone ID: OTI7D2]

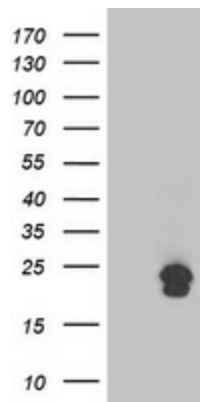
Product data:

| | |
|-------------------------|-------------------------------------------------------------------------------------------------------------------------------------------------------------------------------------------------------------------------------------------------------------------------------------------|
| Product Type: | Primary Antibodies |
| Clone Name: | OTI7D2 |
| Applications: | IF, WB |
| Recommended Dilution: | WB 1:500, IF 1:100 |
| Reactivity: | Human, Mouse, Rat |
| Host: | Mouse |
| Isotype: | IgG1 |
| Clonality: | Monoclonal |
| Immunogen: | Full length human recombinant protein of human TMED1(NP_006849) produced in HEK293T cell. |
| Formulation: | PBS (pH 7.3) containing 1% BSA, 50% glycerol and 0.02% sodium azide. |
| Concentration: | 0.25 mg/ml |
| Purification: | Purified from mouse ascites fluids or tissue culture supernatant by affinity chromatography (protein A/G) |
| Conjugation: | Unconjugated |
| Storage: | Store at -20°C as received. |
| Stability: | Stable for 12 months from date of receipt. |
| Predicted Protein Size: | 22.8 kDa |
| Gene Name: | transmembrane p24 trafficking protein 1 |
| Database Link: | NP_006849 Entrez Gene 17083 Mouse Entrez Gene 315461 Rat Entrez Gene 11018 Human Q13445 |
| Background: | The protein encoded by this gene was identified by its interaction with interleukin 1 receptor-like 1 (IL1RL1). This protein lacks any similarity to other interleukin 1 ligands. The functional significance of its interaction with IL1RL1 is not known. [provided by RefSeq, Jul 2008] |
| Synonyms: | Il1rl1l; IL1RL1LG; p24g1; Tp24 |
| Protein Families: | Druggable Genome, Transmembrane |

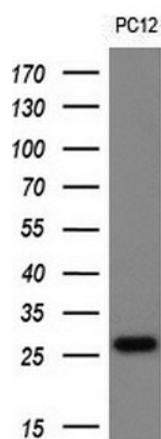


[View online »](#)

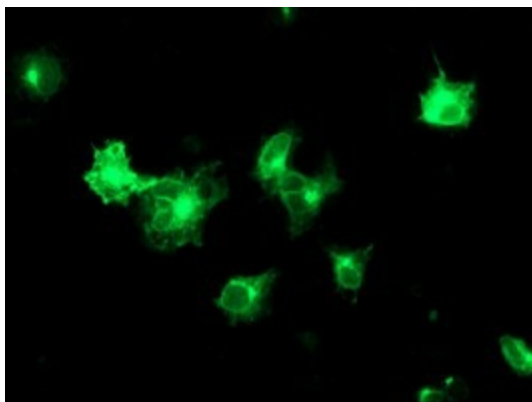
Product images:



HEK293T cells were transfected with the pCMV6-ENTRY control (Cat# [PS100001], Left lane) or pCMV6-ENTRY TMED1 (Cat# [RC200255], Right lane) cDNA for 48 hrs and lysed. Equivalent amounts of cell lysates (5 ug per lane) were separated by SDS-PAGE and immunoblotted with anti-TMED1 (Cat# TA503620). Positive lysates [LY402049] (100ug) and [LC402049] (20ug) can be purchased separately from OriGene.



Western blot analysis of extracts (10ug) from 1 cell line by using anti-TMED1 monoclonal antibody (1:200).



Western blot analysis of extracts (10ug) from PC12 cell line by using anti-TMED1 monoclonal antibody (1:200).