

Product datasheet for **TA503604AM**

TFIIF (GTF2F1) Mouse Monoclonal Antibody (Biotin conjugated) [Clone ID: OTI4B10]

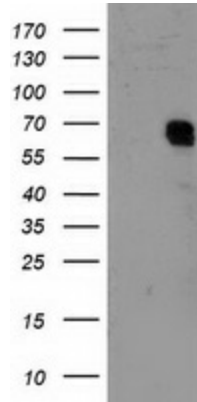
Product data:

Product Type:	Primary Antibodies
Clone Name:	OTI4B10
Applications:	FC, IHC, WB
Recommended Dilution:	WB 1:500~2000, IHC 1:150, FLOW 1:100
Reactivity:	Human, Dog, Monkey, Mouse, Rat
Host:	Mouse
Isotype:	IgG1
Clonality:	Monoclonal
Immunogen:	Full length human recombinant protein of human GTF2F1(NP_002087) produced in HEK293T cell.
Formulation:	PBS (pH 7.3) containing 1% BSA, 50% glycerol and 0.02% sodium azide.
Concentration:	0.5 mg/ml
Purification:	Purified from mouse ascites fluids or tissue culture supernatant by affinity chromatography (protein A/G)
Conjugation:	Biotin
Storage:	Store at -20°C as received.
Stability:	Stable for 12 months from date of receipt.
Predicted Protein Size:	58.1 kDa
Gene Name:	general transcription factor IIF subunit 1
Database Link:	NP_002087 Entrez Gene 98053 Mouse Entrez Gene 316123 Rat Entrez Gene 476731 Dog Entrez Gene 699221 Monkey Entrez Gene 2962 Human P35269
Synonyms:	BTF4; RAP74; TF2F1; TFIIF
Protein Families:	Druggable Genome, Transcription Factors
Protein Pathways:	Basal transcription factors

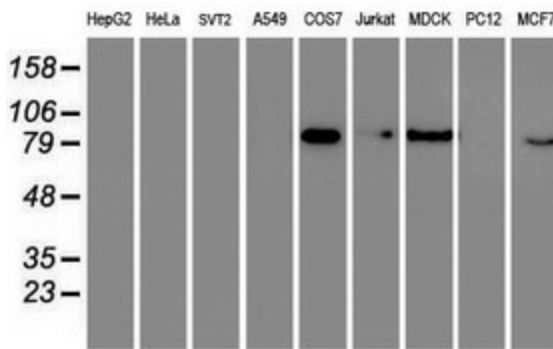


[View online »](#)

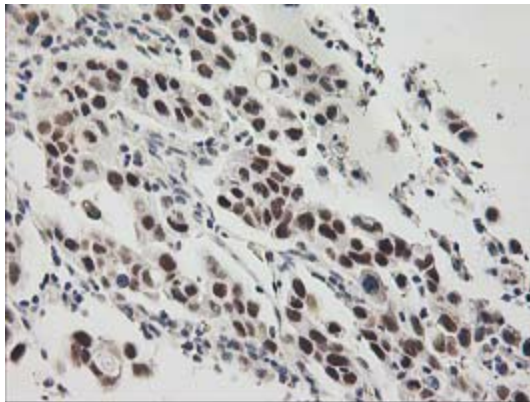
Product images:



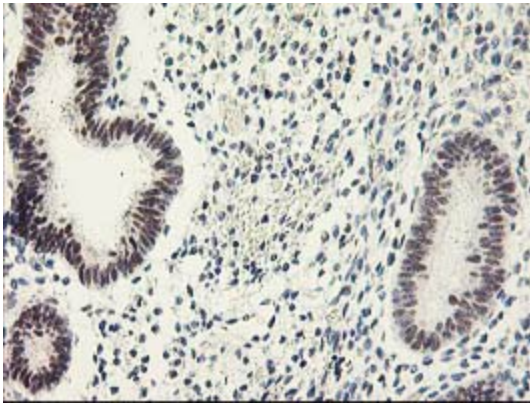
HEK293T cells were transfected with the pCMV6-ENTRY control (Cat# [PS100001], Left lane) or pCMV6-ENTRY GTF2F1 (Cat# [RC201294], Right lane) cDNA for 48 hrs and lysed. Equivalent amounts of cell lysates (5 ug per lane) were separated by SDS-PAGE and immunoblotted with anti-GTF2F1 (Cat# [TA503604]). Positive lysates [LY400767] (100ug) and [LC400767] (20ug) can be purchased separately from OriGene.



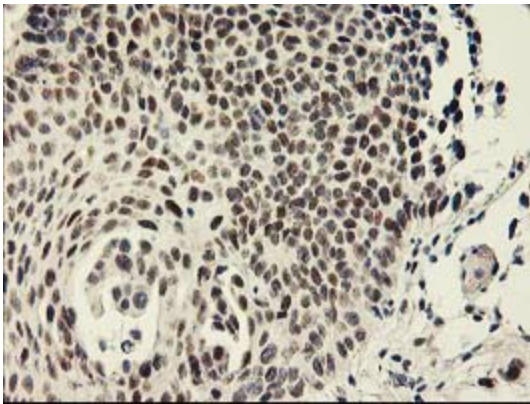
Western blot analysis of extracts (35ug) from 9 different cell lines by using anti-GTF2F1 monoclonal antibody.



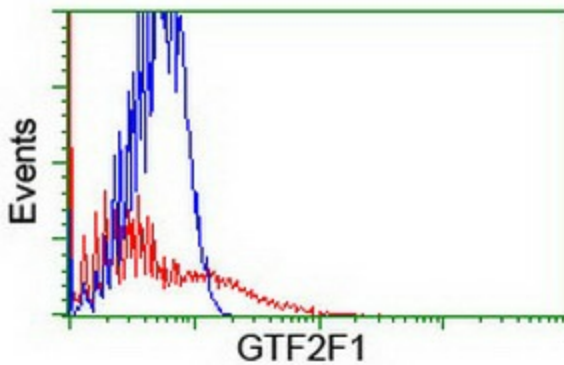
Immunohistochemical staining of paraffin-embedded Carcinoma of Human lung tissue using anti-GTF2F1 mouse monoclonal antibody. (Heat-induced epitope retrieval by 10mM citric buffer, pH6.0, 100°C for 10min, [TA503604])



Immunohistochemical staining of paraffin-embedded Human endometrium tissue within the normal limits using anti-GTF2F1 mouse monoclonal antibody. (Heat-induced epitope retrieval by 10mM citric buffer, pH6.0, 100°C for 10min, [TA503604])



Immunohistochemical staining of paraffin-embedded Carcinoma of Human bladder tissue using anti-GTF2F1 mouse monoclonal antibody. (Heat-induced epitope retrieval by 10mM citric buffer, pH6.0, 100°C for 10min, [TA503604])



HEK293T cells transfected with either [RC201294] overexpress plasmid (Red) or empty vector control plasmid (Blue) were immunostained by anti-GTF2F1 antibody ([TA503604]), and then analyzed by flow cytometry.