

Product datasheet for **TA503601S**

ELK3 Mouse Monoclonal Antibody [Clone ID: OTI2F12]

Product data:

Product Type:	Primary Antibodies
Clone Name:	OTI2F12
Applications:	FC, IF, IHC, WB
Recommended Dilution:	WB 1:2000, IHC 1:150, IF 1:100, FLOW 1:100
Reactivity:	Human, Mouse, Rat
Host:	Mouse
Isotype:	IgG1
Clonality:	Monoclonal
Immunogen:	Full length human recombinant protein of human ELK3(NP_005221) produced in HEK293T cell.
Formulation:	PBS (pH 7.3) containing 1% BSA, 50% glycerol and 0.02% sodium azide.
Concentration:	0.61 mg/ml
Purification:	Purified from mouse ascites fluids or tissue culture supernatant by affinity chromatography (protein A/G)
Conjugation:	Unconjugated
Storage:	Store at -20°C as received.
Stability:	Stable for 12 months from date of receipt.
Predicted Protein Size:	44.1 kDa
Gene Name:	ETS transcription factor ELK3
Database Link:	NP_005221 Entrez Gene 13713 Mouse Entrez Gene 2004 Human P41970
Background:	The protein encoded by this gene is a member of the ETS-domain transcription factor family and the ternary complex factor (TCF) subfamily. Proteins in this subfamily regulate transcription when recruited by serum response factor to bind to serum response elements. This protein is activated by signal-induced phosphorylation; studies in rodents suggest that it is a transcriptional inhibitor in the absence of Ras, but activates transcription when Ras is present. [provided by RefSeq]

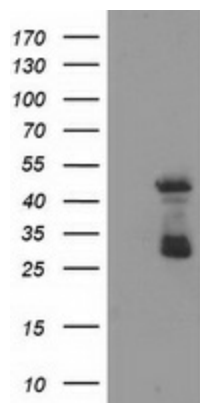


[View online »](#)

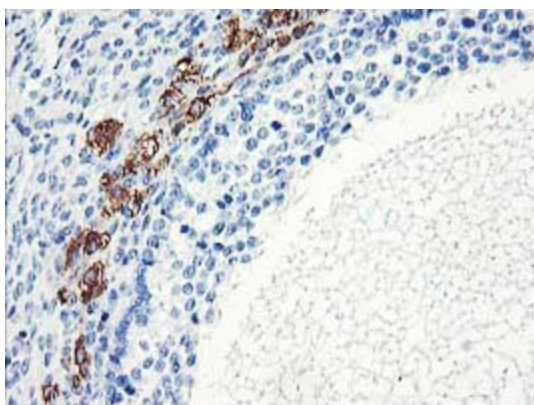
Synonyms: ERP; NET; SAP-2; SAP2

Protein Families: Transcription Factors

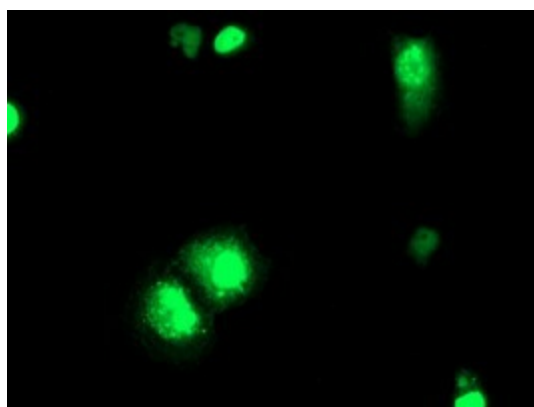
Product images:



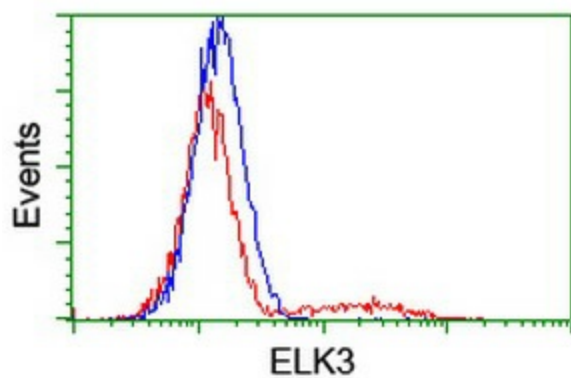
HEK293T cells were transfected with the pCMV6-ENTRY control (Left lane) or pCMV6-ENTRY ELK3 ([RC203114], Right lane) cDNA for 48 hrs and lysed. Equivalent amounts of cell lysates (5 ug per lane) were separated by SDS-PAGE and immunoblotted with anti-ELK3. Positive lysates [LY401602] (100ug) and [LC401602] (20ug) can be purchased separately from OriGene.



Immunohistochemical staining of paraffin-embedded Adenocarcinoma of Human ovary tissue using anti-ELK3 mouse monoclonal antibody. (Heat-induced epitope retrieval by 10mM citric buffer, pH6.0, 100°C for 10min, [TA503601])



Anti-ELK3 mouse monoclonal antibody ([TA503601]) immunofluorescent staining of COS7 cells transiently transfected by pCMV6-ENTRY ELK3 ([RC203114]).



HEK293T cells transfected with either [RC203114] overexpress plasmid (Red) or empty vector control plasmid (Blue) were immunostained by anti-ELK3 antibody ([TA503601]), and then analyzed by flow cytometry.