

Product datasheet for **TA503589M**

GBP1 Mouse Monoclonal Antibody [Clone ID: OT11B2]

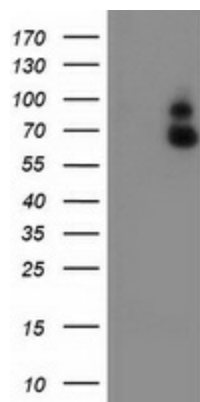
Product data:

Product Type:	Primary Antibodies
Clone Name:	OT11B2
Applications:	FC, IF, IHC, WB
Recommended Dilution:	WB 1:2000, IHC 1:150, IF 1:100, FLOW 1:100
Reactivity:	Human
Host:	Mouse
Isotype:	IgG1
Clonality:	Monoclonal
Immunogen:	Full length human recombinant protein of human GBP1(NP_002044) produced in HEK293T cell.
Formulation:	PBS (pH 7.3) containing 1% BSA, 50% glycerol and 0.02% sodium azide.
Concentration:	1 mg/ml
Purification:	Purified from mouse ascites fluids or tissue culture supernatant by affinity chromatography (protein A/G)
Conjugation:	Unconjugated
Storage:	Store at -20°C as received.
Stability:	Stable for 12 months from date of receipt.
Predicted Protein Size:	67.8 kDa
Gene Name:	guanylate binding protein 1
Database Link:	NP_002044 Entrez Gene 2633 Human P32455
Background:	Guanylate binding protein expression is induced by interferon. Guanylate binding proteins are characterized by their ability to specifically bind guanine nucleotides (GMP, GDP, and GTP) and are distinguished from the GTP-binding proteins by the presence of 2 binding motifs rather than 3. [provided by RefSeq]
Synonyms:	67kD; 67kDa; guanylate binding protein 1; interferon-inducible; OTTHUMP00000012352

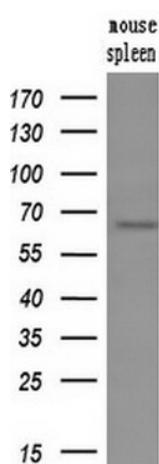


[View online »](#)

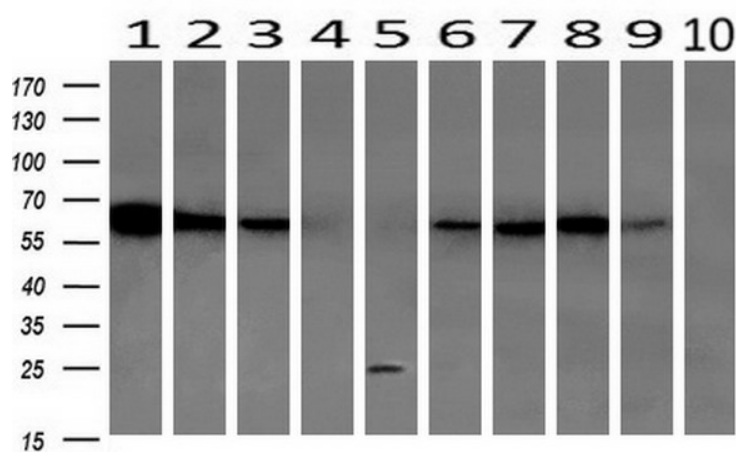
Product images:



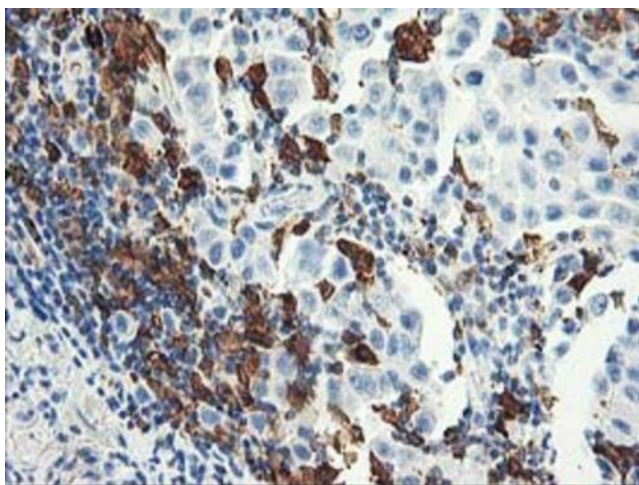
HEK293T cells were transfected with the pCMV6-ENTRY control (Cat# [PS100001], Left lane) or pCMV6-ENTRY GBP1 (Cat# [RC201236], Right lane) cDNA for 48 hrs and lysed. Equivalent amounts of cell lysates (5 ug per lane) were separated by SDS-PAGE and immunoblotted with anti-GBP1 (Cat# [TA503589]). Positive lysates [LY400751] (100ug) and [LC400751] (20ug) can be purchased separately from OriGene.



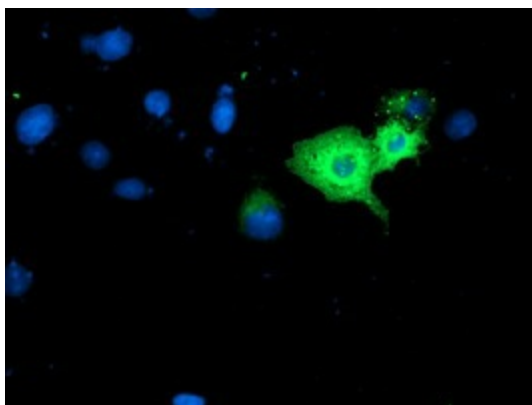
Western blot analysis of extracts (10ug) from a mouse tissues by using anti-GBP1 monoclonal antibody (1:200).



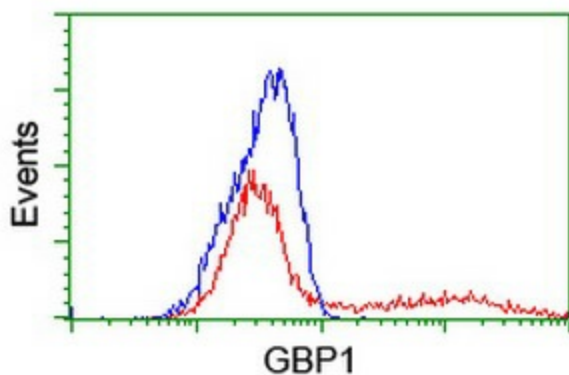
Western blot analysis of extracts (10ug) from 10 Human tissue by using anti-GBP1 monoclonal antibody at 1:200 (1: Testis; 2: Omentum; 3: Uterus; 4: Breast; 5: Brain; 6: Liver; 7: Ovary; 8: Thyroid gland; 9: colon; 10: spleen).



Immunohistochemical staining of paraffin-embedded Carcinoma of Human lung tissue using anti-GBP1 mouse monoclonal antibody. Heat-induced epitope retrieval by EDTA solution buffer pH 8.0 at 120°C for 3 min.



Anti-GBP1 mouse monoclonal antibody ([TA503589]) immunofluorescent staining of COS7 cells transiently transfected by pCMV6-ENTRY GBP1 ([RC201236]).



HEK293T cells transfected with either [RC201236] overexpress plasmid (Red) or empty vector control plasmid (Blue) were immunostained by anti-GBP1 antibody ([TA503589]), and then analyzed by flow cytometry.