

Product datasheet for **TA503573AM**

Apc2 (ANAPC2) Mouse Monoclonal Antibody (Biotin conjugated) [Clone ID: OTI3E1]

Product data:

Product Type:	Primary Antibodies
Clone Name:	OTI3E1
Applications:	FC, IF, WB
Recommended Dilution:	WB 1:2000, IF 1:100, FLOW 1:100
Reactivity:	Human, Mouse, Rat
Host:	Mouse
Isotype:	IgG2a
Clonality:	Monoclonal
Immunogen:	Full length human recombinant protein of human ANAPC2(NP_037498) produced in HEK293T cell.
Formulation:	PBS (pH 7.3) containing 1% BSA, 50% glycerol and 0.02% sodium azide.
Concentration:	0.5 mg/ml
Purification:	Purified from mouse ascites fluids or tissue culture supernatant by affinity chromatography (protein A/G)
Conjugation:	Biotin
Storage:	Store at -20°C as received.
Stability:	Stable for 12 months from date of receipt.
Predicted Protein Size:	93.6 kDa
Gene Name:	anaphase promoting complex subunit 2
Database Link:	NP_037498 Entrez Gene 99152 Mouse Entrez Gene 296558 Rat Entrez Gene 29882 Human Q9UJX6



[View online »](#)

Background:

A large protein complex, termed the anaphase-promoting complex (APC), or the cyclosome, promotes metaphase-anaphase transition by ubiquitinating its specific substrates such as mitotic cyclins and anaphase inhibitor, which are subsequently degraded by the 26S proteasome. Biochemical studies have shown that the vertebrate APC contains eight subunits. The composition of the APC is highly conserved in organisms from yeast to humans. The product of this gene is a component of the complex and shares sequence similarity with a recently identified family of proteins called cullins, which may also be involved in ubiquitin-mediated degradation. [provided by RefSeq, Jul 2008]

Synonyms:

APC2

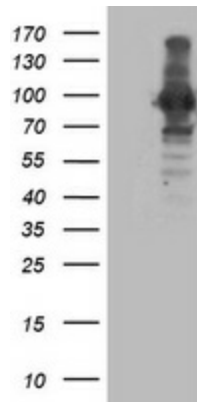
Protein Families:

Druggable Genome

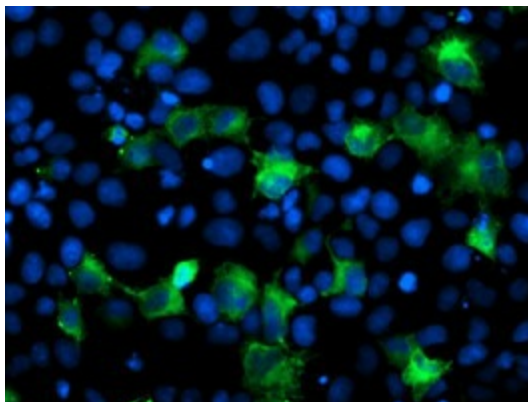
Protein Pathways:

Cell cycle, Oocyte meiosis, Progesterone-mediated oocyte maturation, Ubiquitin mediated proteolysis

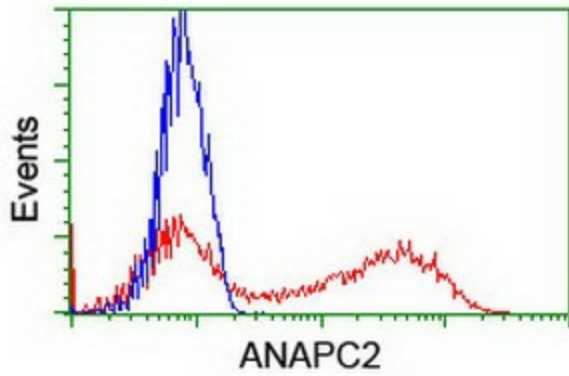
Product images:



HEK293T cells were transfected with the pCMV6-ENTRY control (Left lane) or pCMV6-ENTRY ANAPC2 ([RC207539], Right lane) cDNA for 48 hrs and lysed. Equivalent amounts of cell lysates (5 ug per lane) were separated by SDS-PAGE and immunoblotted with anti-ANAPC2. Positive lysates [LY402247] (100ug) and [LC402247] (20ug) can be purchased separately from OriGene.



Anti-ANAPC2 mouse monoclonal antibody ([TA503573]) immunofluorescent staining of COS7 cells transiently transfected by pCMV6-ENTRY ANAPC2 ([RC207539]).



HEK293T cells transfected with either [RC207539] overexpress plasmid (Red) or empty vector control plasmid (Blue) were immunostained by anti-ANAPC2 antibody ([TA503573]), and then analyzed by flow cytometry.