

Product datasheet for **TA503568S**

EIF2B3 Mouse Monoclonal Antibody [Clone ID: OTI2D2]

Product data:

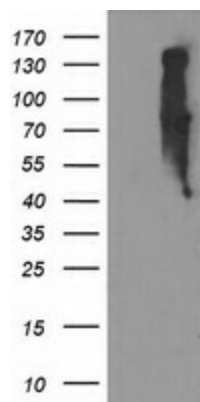
Product Type:	Primary Antibodies
Clone Name:	OTI2D2
Applications:	IF, WB
Recommended Dilution:	WB 1:2000, IF 1:100
Reactivity:	Human, Mouse, Rat
Host:	Mouse
Isotype:	IgG1
Clonality:	Monoclonal
Immunogen:	Full length human recombinant protein of human EIF2B3(NP_065098) produced in HEK293T cell.
Formulation:	PBS (pH 7.3) containing 1% BSA, 50% glycerol and 0.02% sodium azide.
Concentration:	1 mg/ml
Purification:	Purified from mouse ascites fluids or tissue culture supernatant by affinity chromatography (protein A/G)
Conjugation:	Unconjugated
Storage:	Store at -20°C as received.
Stability:	Stable for 12 months from date of receipt.
Predicted Protein Size:	50.1 kDa
Gene Name:	eukaryotic translation initiation factor 2B subunit gamma
Database Link:	NP_065098 Entrez Gene 108067 Mouse Entrez Gene 171145 Rat Entrez Gene 8891 Human Q9NR50
Background:	The protein encoded by this gene is one of the subunits of initiation factor eIF2B, which catalyzes the exchange of eukaryotic initiation factor 2-bound GDP for GTP. It has also been found to function as a cofactor of hepatitis C virus internal ribosome entry site-mediated translation. Mutations in this gene have been associated with leukodystrophy with vanishing white matter. Alternatively spliced transcript variants encoding different isoforms have been found for this gene. [provided by RefSeq]



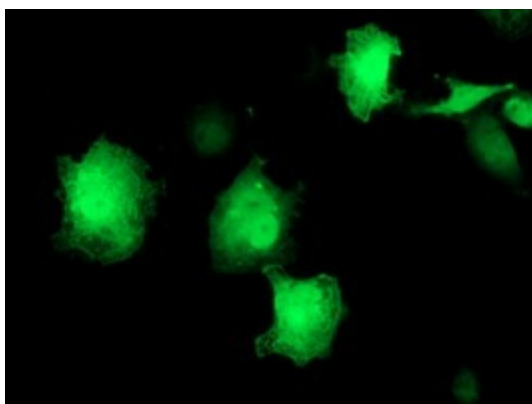
[View online »](#)

Synonyms: EIF-2B; EIF2Bgamma

Product images:



HEK293T cells were transfected with the pCMV6-ENTRY control (Left lane) or pCMV6-ENTRY EIF2B3 ([RC223570], Right lane) cDNA for 48 hrs and lysed. Equivalent amounts of cell lysates (5 ug per lane) were separated by SDS-PAGE and immunoblotted with anti-EIF2B3. Positive lysates [LY412535] (100ug) and [LC412535] (20ug) can be purchased separately from OriGene.



Anti-EIF2B3 mouse monoclonal antibody ([TA503568]) immunofluorescent staining of COS7 cells transiently transfected by pCMV6-ENTRY EIF2B3 ([RC223570]).