

## Product datasheet for **TA503565BM**

### MTFMT Mouse Monoclonal Antibody (HRP conjugated) [Clone ID: OTI1E7]

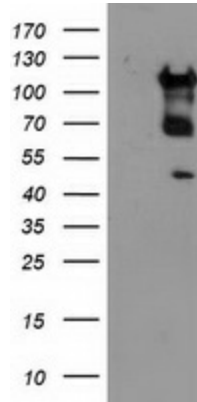
#### Product data:

Product Type:	Primary Antibodies
Clone Name:	OTI1E7
Applications:	IHC, WB
Recommended Dilution:	WB 1:500~2000, IHC 1:150
Reactivity:	Human
Host:	Mouse
Isotype:	IgG1
Clonality:	Monoclonal
Immunogen:	Human recombinant protein fragment corresponding to amino acids 175-389 of human MTFMT(NP_640335) produced in E.coli.
Formulation:	PBS (pH 7.3) containing 1% BSA, 50% glycerol.
Concentration:	0.5 mg/ml
Purification:	Purified from mouse ascites fluids or tissue culture supernatant by affinity chromatography (protein A/G)
Conjugation:	HRP
Storage:	Store at -20°C as received.
Stability:	Stable for 12 months from date of receipt.
Predicted Protein Size:	43.7 kDa
Gene Name:	mitochondrial methionyl-tRNA formyltransferase
Database Link:	<a href="#">NP_640335</a> <a href="#">Entrez Gene 123263 Human</a> <a href="#">Q96DP5</a>
Synonyms:	COXPD15; FMT1
Protein Pathways:	Aminoacyl-tRNA biosynthesis, One carbon pool by folate

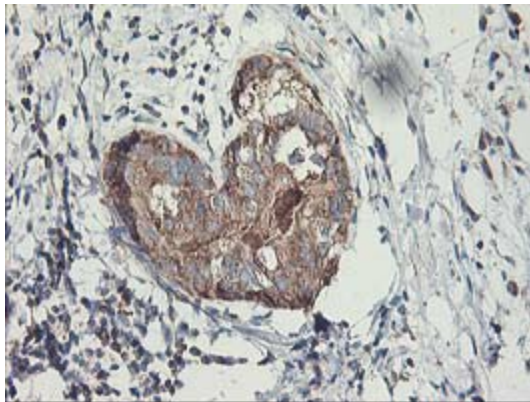


[View online »](#)

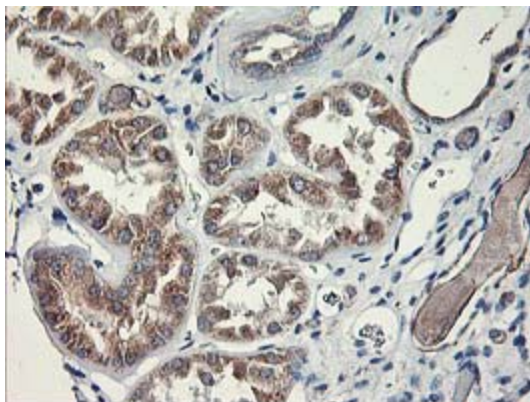
**Product images:**



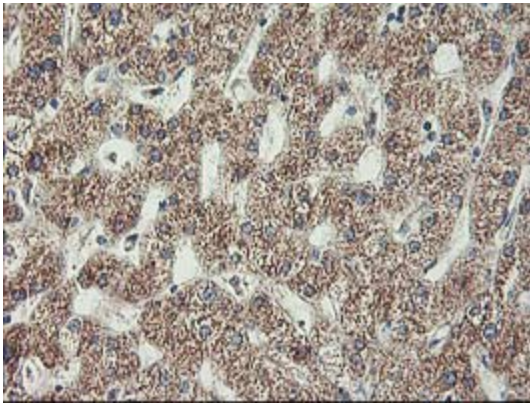
HEK293T cells were transfected with the pCMV6-ENTRY control (Cat# [PS100001], Left lane) or pCMV6-ENTRY MTFMT (Cat# [RC207666], Right lane) cDNA for 48 hrs and lysed. Equivalent amounts of cell lysates (5 ug per lane) were separated by SDS-PAGE and immunoblotted with anti-MTFMT(Cat# [TA503565]). Positive lysates [LY408317] (100ug) and [LC408317] (20ug) can be purchased separately from OriGene.



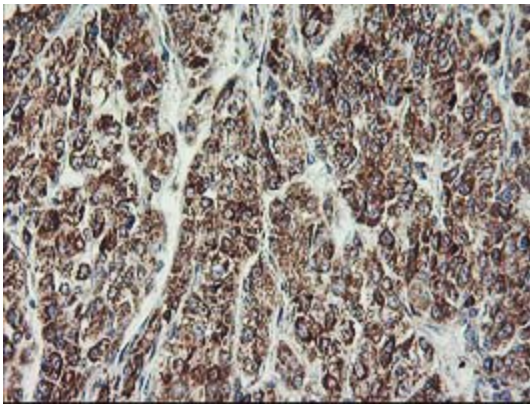
Immunohistochemical staining of paraffin-embedded Adenocarcinoma of Human breast tissue using anti-MTFMT mouse monoclonal antibody. (Heat-induced epitope retrieval by 10mM citric buffer, pH6.0, 100°C for 10min, [TA503565])



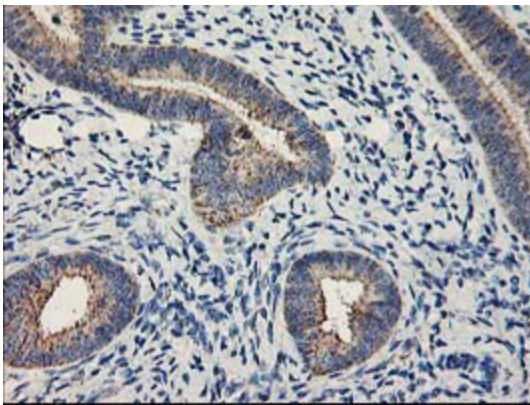
Immunohistochemical staining of paraffin-embedded Human Kidney tissue within the normal limits using anti-MTFMT mouse monoclonal antibody. (Heat-induced epitope retrieval by 10mM citric buffer, pH6.0, 100°C for 10min, [TA503565])



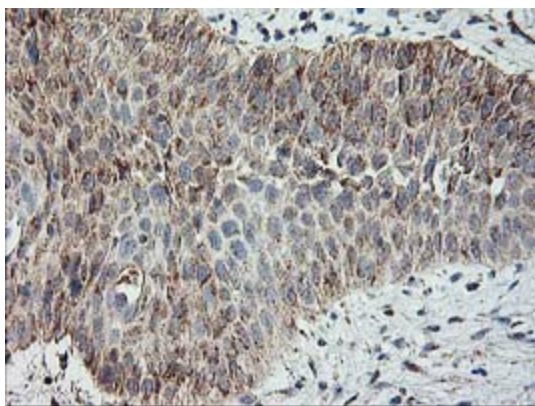
Immunohistochemical staining of paraffin-embedded Human liver tissue within the normal limits using anti-MTFMT mouse monoclonal antibody. (Heat-induced epitope retrieval by 10mM citric buffer, pH6.0, 100°C for 10min, [TA503565])



Immunohistochemical staining of paraffin-embedded Carcinoma of Human liver tissue using anti-MTFMT mouse monoclonal antibody. (Heat-induced epitope retrieval by 10mM citric buffer, pH6.0, 100°C for 10min, [TA503565])



Immunohistochemical staining of paraffin-embedded Human endometrium tissue within the normal limits using anti-MTFMT mouse monoclonal antibody. (Heat-induced epitope retrieval by 10mM citric buffer, pH6.0, 100°C for 10min, [TA503565])



Immunohistochemical staining of paraffin-embedded Carcinoma of Human bladder tissue using anti-MTFMT mouse monoclonal antibody. (Heat-induced epitope retrieval by 10mM citric buffer, pH6.0, 100°C for 10min, [TA503565])