

Product datasheet for **TA503561**

SEC14 like protein 2 (SEC14L2) Mouse Monoclonal Antibody [Clone ID: OTI1H3]

Product data:

Product Type:	Primary Antibodies
Clone Name:	OTI1H3
Applications:	IF, WB
Recommended Dilution:	WB 1:2000, IF 1:100
Reactivity:	Human, Mouse, Rat
Host:	Mouse
Isotype:	IgG2b
Clonality:	Monoclonal
Immunogen:	Full length human recombinant protein of human SEC14L2(NP_036561) produced in HEK293T cell.
Formulation:	PBS (pH 7.3) containing 1% BSA, 50% glycerol and 0.02% sodium azide.
Concentration:	0.59 mg/ml
Purification:	Purified from mouse ascites fluids or tissue culture supernatant by affinity chromatography (protein A/G)
Conjugation:	Unconjugated
Storage:	Store at -20°C as received.
Stability:	Stable for 12 months from date of receipt.
Predicted Protein Size:	46 kDa
Gene Name:	SEC14 like lipid binding 2
Database Link:	NP_036561 Entrez Gene 67815 Mouse Entrez Gene 23541 Human O76054
Background:	This gene encodes a cytosolic protein which belongs to a family of lipid-binding proteins including Sec14p, alpha-tocopherol transfer protein, and cellular retinol-binding protein. The encoded protein stimulates squalene monooxygenase which is a downstream enzyme in the cholesterol biosynthetic pathway. Alternatively spliced transcript variants encoding different isoforms have been identified for this gene. [provided by RefSeq, Oct 2008]

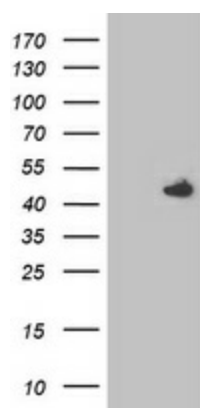


[View online »](#)

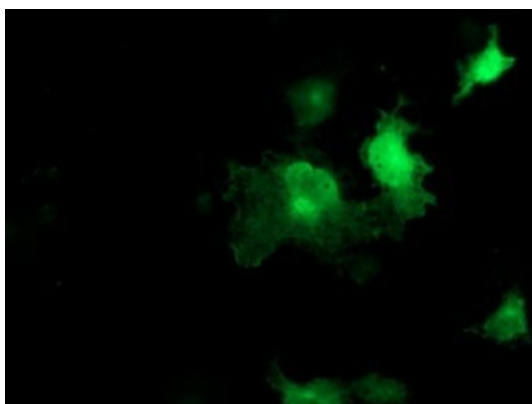
Synonyms: C22orf6; SPF; TAP; TAP1

Protein Families: Transcription Factors

Product images:



HEK293T cells were transfected with the pCMV6-ENTRY control (Left lane) or pCMV6-ENTRY SEC14L2 ([RC215994], Right lane) cDNA for 48 hrs and lysed. Equivalent amounts of cell lysates (5 ug per lane) were separated by SDS-PAGE and immunoblotted with anti-SEC14L2. Positive lysates [LY415756] (100ug) and [LC415756] (20ug) can be purchased separately from OriGene.



Anti-SEC14L2 mouse monoclonal antibody (TA503561) immunofluorescent staining of COS7 cells transiently transfected by pCMV6-ENTRY SEC14L2 ([RC215994]).