

Product datasheet for **TA503550**

Rad51L1 (RAD51B) Mouse Monoclonal Antibody [Clone ID: OTI7H4]

Product data:

Product Type:	Primary Antibodies
Clone Name:	OTI7H4
Applications:	FC, IF, WB
Recommended Dilution:	WB 1:500, IF 1:100, FLOW 1:100
Reactivity:	Human, Mouse
Host:	Mouse
Isotype:	IgG1
Clonality:	Monoclonal
Immunogen:	Human recombinant protein fragment corresponding to amino acids 119-346 of human RAD51L1(NP_598193) produced in E.coli.
Formulation:	PBS (pH 7.3) containing 1% BSA, 50% glycerol and 0.02% sodium azide.
Concentration:	0.27 mg/ml
Purification:	Purified from mouse ascites fluids or tissue culture supernatant by affinity chromatography (protein A/G)
Conjugation:	Unconjugated
Storage:	Store at -20°C as received.
Stability:	Stable for 12 months from date of receipt.
Predicted Protein Size:	42 kDa
Gene Name:	RAD51 paralog B
Database Link:	NP_598193 Entrez Gene 19363 Mouse Entrez Gene 5890 Human O15315



[View online »](#)

Background:

The protein encoded by this gene is a member of the RAD51 protein family. RAD51 family members are evolutionarily conserved proteins essential for DNA repair by homologous recombination. This protein has been shown to form a stable heterodimer with the family member RAD51C, which further interacts with the other family members, such as RAD51, XRCC2, and XRCC3. Overexpression of this gene was found to cause cell cycle G1 delay and cell apoptosis, which suggested a role of this protein in sensing DNA damage. At least three alternatively spliced transcript variants encoding distinct isoforms have been observed. [provided by RefSeq]

Synonyms:

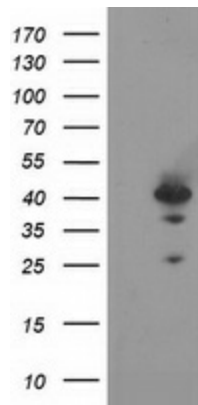
R51H2; RAD51L1; REC2

Protein Families:

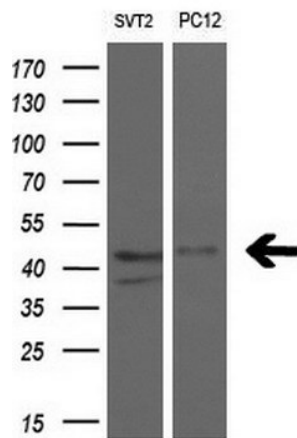
Druggable Genome

Protein Pathways:

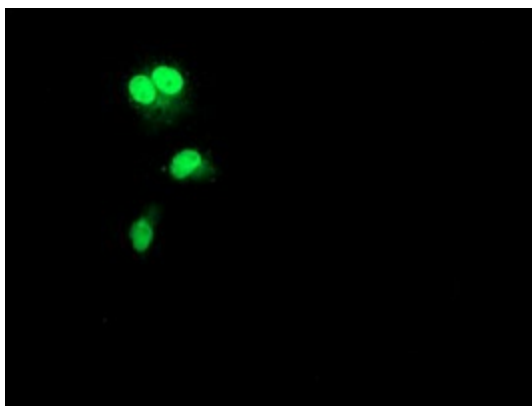
Homologous recombination

Product images:


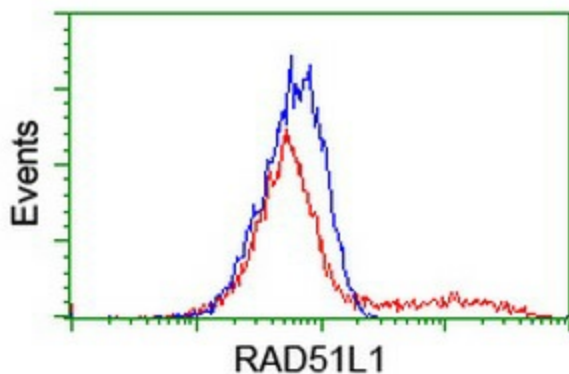
HEK293T cells were transfected with the pCMV6-ENTRY control (Cat# [PS100001], Left lane) or pCMV6-ENTRY RAD51L1 (Cat# [RC206457], Right lane) cDNA for 48 hrs and lysed. Equivalent amounts of cell lysates (5 ug per lane) were separated by SDS-PAGE and immunoblotted with anti-RAD51L1 (Cat# TA503550). Positive lysates [LY408768] (100ug) and [LC408768] (20ug) can be purchased separately from OriGene.



Western blot analysis of extracts (10ug) from 2 different cell lines by using anti-RAD51L1 monoclonal antibody at 1:200 dilution.



Anti-RAD51L1 mouse monoclonal antibody (TA503550) immunofluorescent staining of COS7 cells transiently transfected by pCMV6-ENTRY RAD51L1 ([RC206457]).



HEK293T cells transfected with either [RC206457] overexpress plasmid (Red) or empty vector control plasmid (Blue) were immunostained by anti-RAD51L1 antibody (TA503550), and then analyzed by flow cytometry.