

## Product datasheet for **TA503546S**

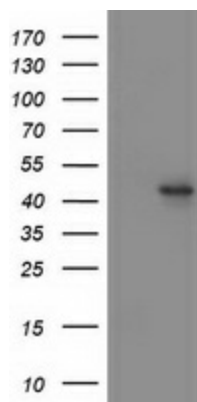
### MTFMT Mouse Monoclonal Antibody [Clone ID: OTI1B10]

#### Product data:

Product Type:	Primary Antibodies
Clone Name:	OTI1B10
Applications:	WB
Recommended Dilution:	WB 1:500~2000
Reactivity:	Human
Host:	Mouse
Isotype:	IgG1
Clonality:	Monoclonal
Immunogen:	Human recombinant protein fragment corresponding to amino acids 175-389 of human MTFMT(NP_640335) produced in E.coli.
Formulation:	PBS (pH 7.3) containing 1% BSA, 50% glycerol and 0.02% sodium azide.
Concentration:	0.46 mg/ml
Purification:	Purified from mouse ascites fluids or tissue culture supernatant by affinity chromatography (protein A/G)
Conjugation:	Unconjugated
Storage:	Store at -20°C as received.
Stability:	Stable for 12 months from date of receipt.
Predicted Protein Size:	43.7 kDa
Gene Name:	mitochondrial methionyl-tRNA formyltransferase
Database Link:	<a href="#">NP_640335</a> <a href="#">Entrez Gene 123263 Human</a> <a href="#">Q96DP5</a>
Synonyms:	COXPD15; FMT1
Protein Pathways:	Aminoacyl-tRNA biosynthesis, One carbon pool by folate



[View online »](#)

**Product images:**

HEK293T cells were transfected with the pCMV6-ENTRY control (Left lane) or pCMV6-ENTRY MTFMT ([RC207666], Right lane) cDNA for 48 hrs and lysed. Equivalent amounts of cell lysates (5 ug per lane) were separated by SDS-PAGE and immunoblotted with anti-MTFMT. Positive lysates [LY408317] (100ug) and [LC408317] (20ug) can be purchased separately from OriGene.