

## Product datasheet for **TA503538BM**

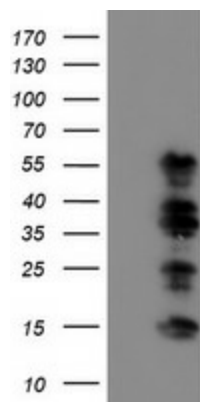
### TAZ (WWTR1) Mouse Monoclonal Antibody (HRP conjugated) [Clone ID: OTI1H9]

#### Product data:

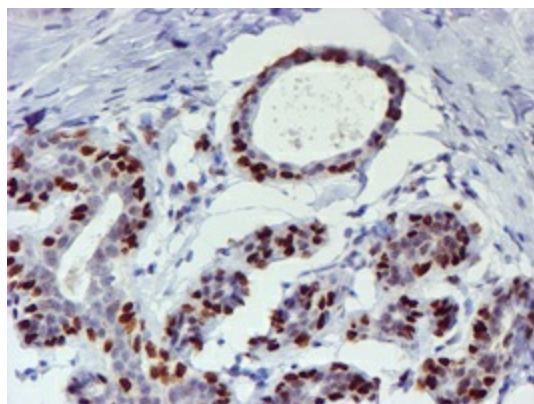
Product Type:	Primary Antibodies
Clone Name:	OTI1H9
Applications:	IHC, WB
Recommended Dilution:	WB 1:2000, IHC 1:150
Reactivity:	Human, Mouse, Rat
Host:	Mouse
Isotype:	IgG2a
Clonality:	Monoclonal
Immunogen:	Full length human recombinant protein of human WWTR1(NP_057287) produced in HEK293T cell.
Formulation:	PBS (pH 7.3) containing 1% BSA, 50% glycerol.
Concentration:	0.5 mg/ml
Purification:	Purified from mouse ascites fluids or tissue culture supernatant by affinity chromatography (protein A/G)
Conjugation:	HRP
Storage:	Store at -20°C as received.
Stability:	Stable for 12 months from date of receipt.
Predicted Protein Size:	43.9 kDa
Gene Name:	WW domain containing transcription regulator 1
Database Link:	<a href="#">NP_056287</a> <a href="#">Entrez Gene 97064 Mouse</a> <a href="#">Entrez Gene 295062 Rat</a> <a href="#">Entrez Gene 25937 Human</a> <a href="#">Q9GZV5</a>
Synonyms:	TAZ
Protein Families:	Druggable Genome, Transcription Factors



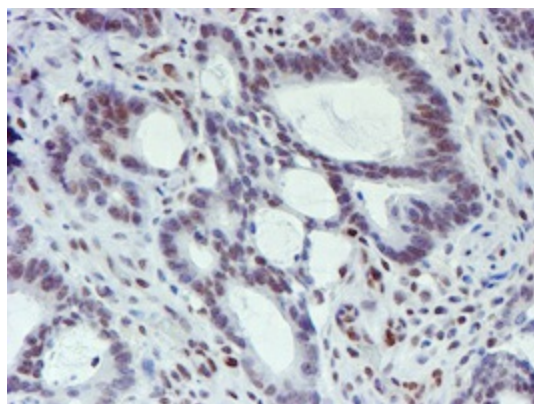
[View online »](#)

**Product images:**


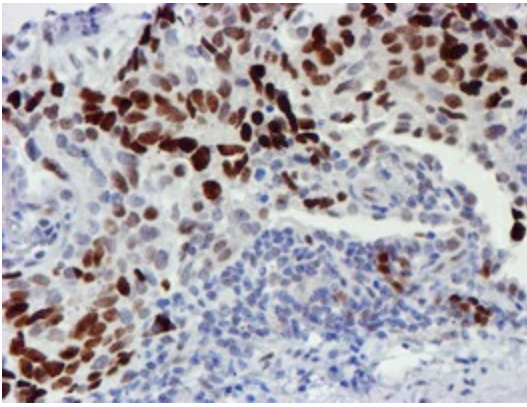
HEK293T cells were transfected with the pCMV6-ENTRY control (Cat# [PS100001], Left lane) or pCMV6-ENTRY WWTR1 (Cat# [RC204082], Right lane) cDNA for 48 hrs and lysed. Equivalent amounts of cell lysates (5 ug per lane) were separated by SDS-PAGE and immunoblotted with anti-WWTR1(Cat# [TA503538]). Positive lysates [LY414524] (100ug) and [LC414524] (20ug) can be purchased separately from OriGene.



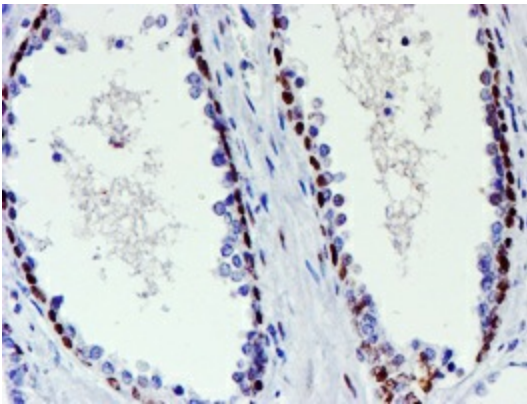
Immunohistochemical staining of paraffin-embedded Human breast tissue within the normal limits using anti-WWTR1 mouse monoclonal antibody. (Heat-induced epitope retrieval by 10mM citric buffer, pH6.0, 100°C for 10min, [TA503538])



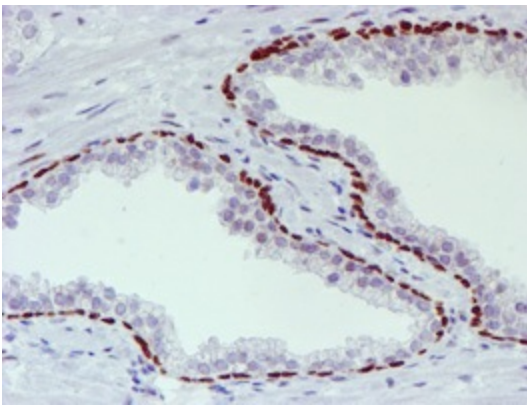
Immunohistochemical staining of paraffin-embedded Adenocarcinoma of Human colon tissue using anti-WWTR1 mouse monoclonal antibody. (Heat-induced epitope retrieval by 10mM citric buffer, pH6.0, 100°C for 10min, [TA503538])



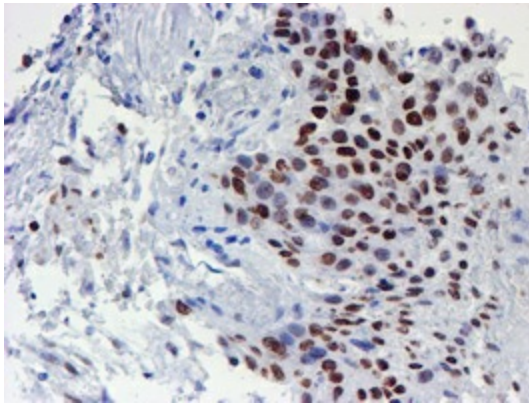
Immunohistochemical staining of paraffin-embedded Carcinoma of Human lung tissue using anti-WWTR1 mouse monoclonal antibody. (Heat-induced epitope retrieval by 10mM citric buffer, pH6.0, 100°C for 10min, [TA503538])



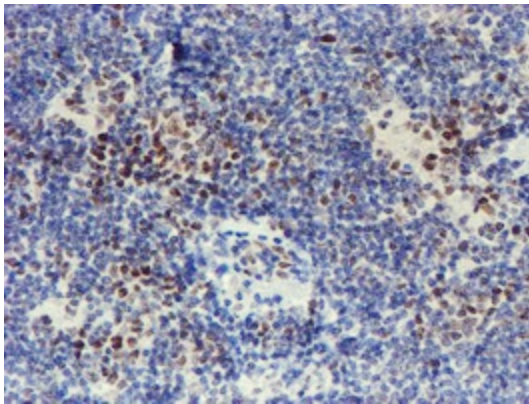
Immunohistochemical staining of paraffin-embedded Human prostate tissue within the normal limits using anti-WWTR1 mouse monoclonal antibody. (Heat-induced epitope retrieval by 10mM citric buffer, pH6.0, 100°C for 10min, [TA503538])



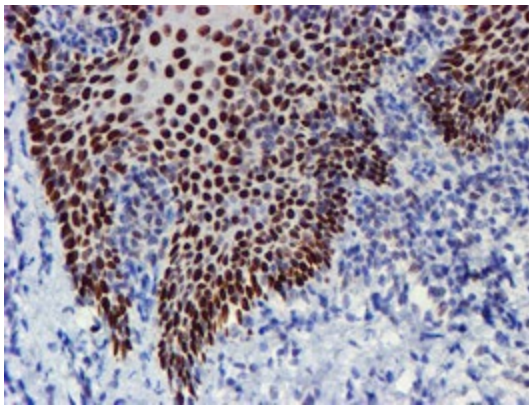
Immunohistochemical staining of paraffin-embedded Carcinoma of Human prostate tissue using anti-WWTR1 mouse monoclonal antibody. (Heat-induced epitope retrieval by 10mM citric buffer, pH6.0, 100°C for 10min, [TA503538])



Immunohistochemical staining of paraffin-embedded Carcinoma of Human bladder tissue using anti-WWTR1 mouse monoclonal antibody. (Heat-induced epitope retrieval by 10mM citric buffer, pH6.0, 100°C for 10min, [TA503538])



Immunohistochemical staining of paraffin-embedded Human lymphoma tissue using anti-WWTR1 mouse monoclonal antibody. (Heat-induced epitope retrieval by 10mM citric buffer, pH6.0, 100°C for 10min, [TA503538])



Immunohistochemical staining of paraffin-embedded Human tonsil within the normal limits using anti-WWTR1 mouse monoclonal antibody. (Heat-induced epitope retrieval by 10mM citric buffer, pH6.0, 100°C for 10min, [TA503538])