

## Product datasheet for **TA503524BM**

### Her2 (ERBB2) Mouse Monoclonal Antibody (HRP conjugated) [Clone ID: OTI11A7]

#### Product data:

Product Type:	Primary Antibodies
Clone Name:	OTI11A7
Applications:	IF, IHC, WB
Recommended Dilution:	WB 1:500~2000, IHC 1:150, IF 1:100
Reactivity:	Human, Mouse, Rat
Host:	Mouse
Isotype:	IgG2a
Clonality:	Monoclonal
Immunogen:	Human recombinant protein fragment corresponding to amino acids 676-1255 of human ERBB2(NP_004439) produced in HEK293T cell
Formulation:	PBS (pH 7.3) containing 1% BSA, 50% glycerol.
Concentration:	0.5 mg/ml
Purification:	Purified from mouse ascites fluids or tissue culture supernatant by affinity chromatography (protein A/G)
Conjugation:	HRP
Storage:	Store at -20°C as received.
Stability:	Stable for 12 months from date of receipt.
Predicted Protein Size:	137.7 kDa
Gene Name:	erb-b2 receptor tyrosine kinase 2
Database Link:	<a href="#">NP_004439</a> <a href="#">Entrez Gene 13866 Mouse</a> <a href="#">Entrez Gene 24337 Rat</a> <a href="#">Entrez Gene 2064 Human</a> <a href="#">P04626</a>



[View online »](#)

**Background:**

This gene encodes a member of the epidermal growth factor (EGF) receptor family of receptor tyrosine kinases. This protein has no ligand binding domain of its own and therefore cannot bind growth factors. However, it does bind tightly to other ligand-bound EGF receptor family members to form a heterodimer, stabilizing ligand binding and enhancing kinase-mediated activation of downstream signalling pathways, such as those involving mitogen-activated protein kinase and phosphatidylinositol-3 kinase. Allelic variations at amino acid positions 654 and 655 of isoform a (positions 624 and 625 of isoform b) have been reported, with the most common allele, Ile654/Ile655, shown here. Amplification and/or overexpression of this gene has been reported in numerous cancers, including breast and ovarian tumors. Alternative splicing results in several additional transcript variants, some encoding different isoforms and others that have not been fully characterized. [provided by RefSeq]

**Synonyms:**

CD340; HER-2; HER-2/neu; HER2; MLN 19; NEU; NGL; TKR1

**Note:**

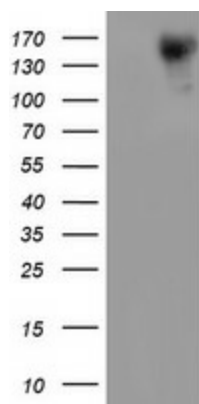
Antibody specificity evaluation by using OriGene Protein microarray chip and WB analysis showed that this antibody cross-reacts with CDH1 recombinant protein in overexpression lysates.

**Protein Families:**

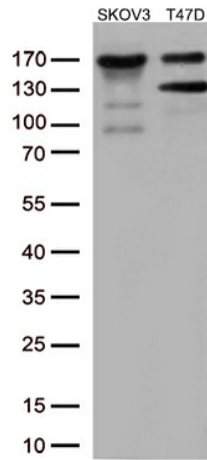
Druggable Genome, Protein Kinase, Transmembrane

**Protein Pathways:**

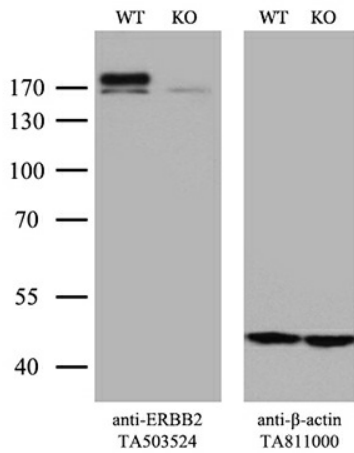
Adherens junction, Bladder cancer, Calcium signaling pathway, Endometrial cancer, ErbB signaling pathway, Focal adhesion, Non-small cell lung cancer, Pancreatic cancer, Pathways in cancer, Prostate cancer

**Product images:**

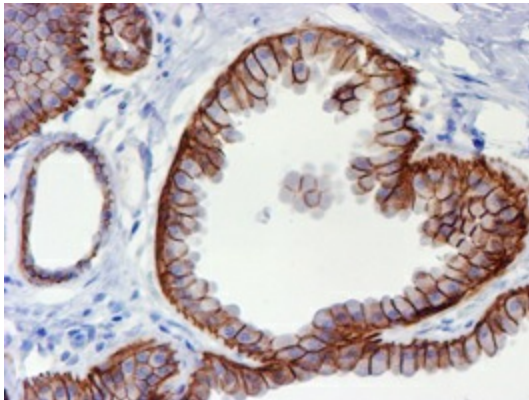
HEK293T cells were transfected with the pCMV6-ENTRY control (Left lane) or pCMV6-ENTRY ERBB2 ([RC212583], Right lane) cDNA for 48 hrs and lysed. Equivalent amounts of cell lysates (5 ug per lane) were separated by SDS-PAGE and immunoblotted with anti-ERBB2. Positive lysates [LY417979] (100ug) and [LC417979] (20ug) can be purchased separately from OriGene.



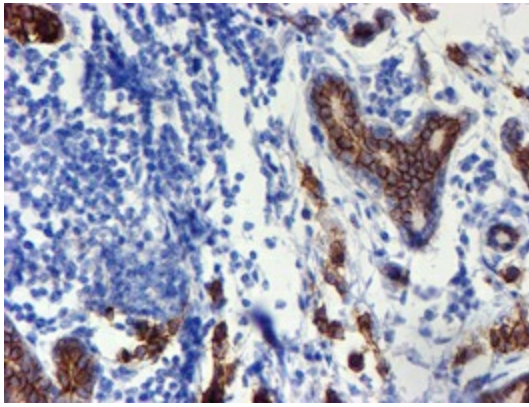
Western blot analysis of extracts (35ug) from 2 different cell lines by using anti-ERBB2 monoclonal antibody (1:500).



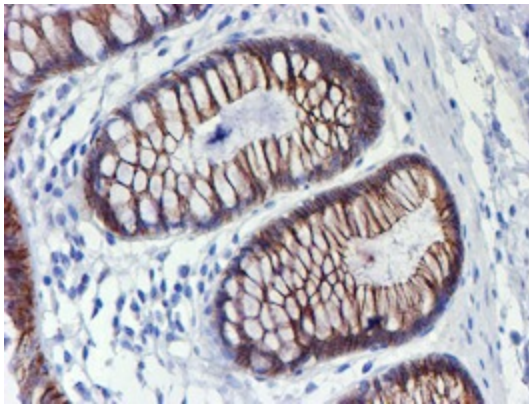
Equivalent amounts of cell lysates (10 ug per lane) of wild-type HeLa cells (WT, Cat# LC810HELA) and ERBB2-Knockout HeLa cells (KO, Cat# [LC810070]) were separated by SDS-PAGE and immunoblotted with anti-ERBB2 monoclonal antibody TA503524. Then the blotted membrane was stripped and reprobed with anti-b-actin antibody ([TA811000]) as a loading control (1:500).



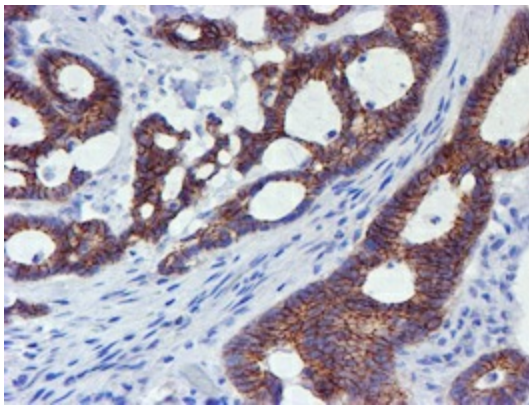
Immunohistochemical staining of paraffin-embedded Human breast tissue within the normal limits using anti-ERBB2 mouse monoclonal antibody. (Heat-induced epitope retrieval by 10mM citric buffer, pH6.0, 100°C for 10min, [TA503524])



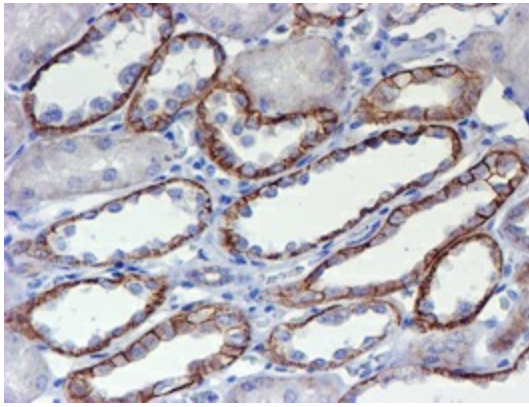
Immunohistochemical staining of paraffin-embedded Adenocarcinoma of Human breast tissue using anti-ERBB2 mouse monoclonal antibody. (Heat-induced epitope retrieval by 10mM citric buffer, pH6.0, 100°C for 10min, [TA503524])



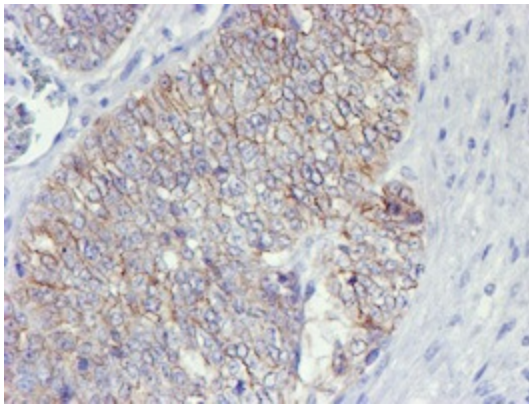
Immunohistochemical staining of paraffin-embedded Human colon tissue within the normal limits using anti-ERBB2 mouse monoclonal antibody. (Heat-induced epitope retrieval by 10mM citric buffer, pH6.0, 100°C for 10min, [TA503524])



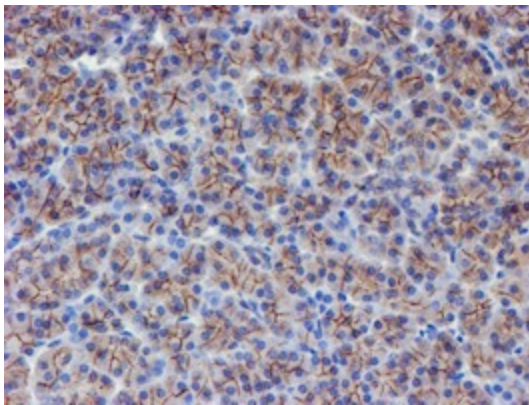
Immunohistochemical staining of paraffin-embedded Adenocarcinoma of Human colon tissue using anti-ERBB2 mouse monoclonal antibody. (Heat-induced epitope retrieval by 10mM citric buffer, pH6.0, 100°C for 10min, [TA503524])



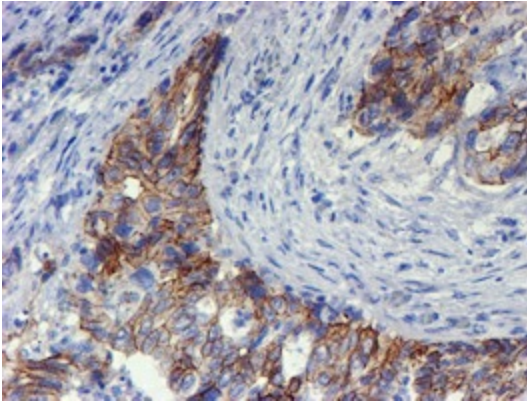
Immunohistochemical staining of paraffin-embedded Human Kidney tissue within the normal limits using anti-ERBB2 mouse monoclonal antibody. (Heat-induced epitope retrieval by 10mM citric buffer, pH6.0, 100°C for 10min, [TA503524])



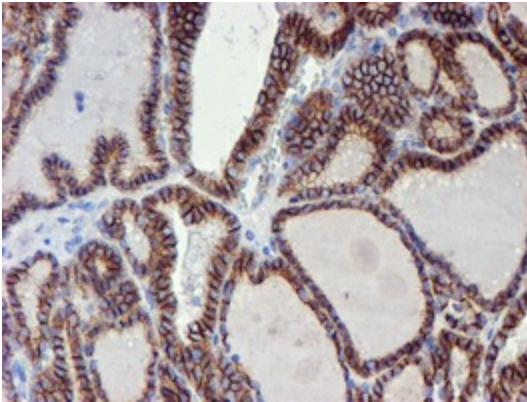
Immunohistochemical staining of paraffin-embedded Adenocarcinoma of Human ovary tissue using anti-ERBB2 mouse monoclonal antibody. (Heat-induced epitope retrieval by 10mM citric buffer, pH6.0, 100°C for 10min, [TA503524])



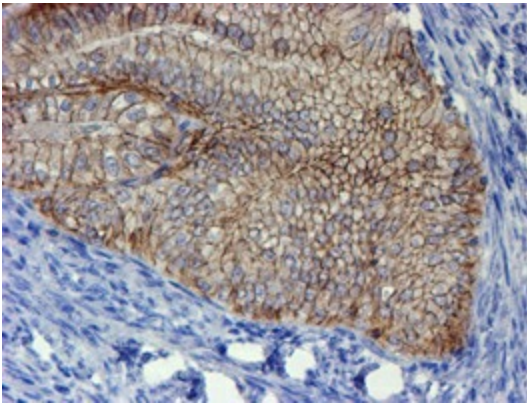
Immunohistochemical staining of paraffin-embedded Human pancreas tissue within the normal limits using anti-ERBB2 mouse monoclonal antibody. (Heat-induced epitope retrieval by 10mM citric buffer, pH6.0, 100°C for 10min, [TA503524])



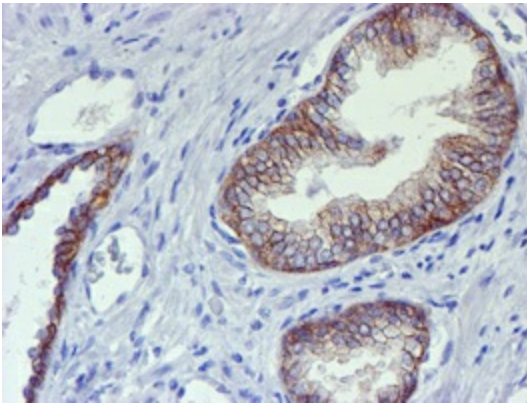
Immunohistochemical staining of paraffin-embedded Carcinoma of Human pancreas tissue using anti-ERBB2 mouse monoclonal antibody. (Heat-induced epitope retrieval by 10mM citric buffer, pH6.0, 100°C for 10min, [TA503524])



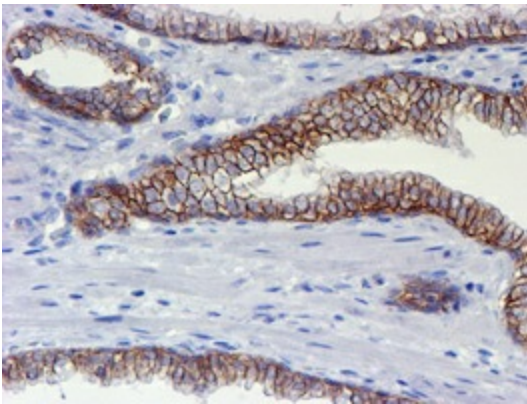
Immunohistochemical staining of paraffin-embedded Carcinoma of Human thyroid tissue using anti-ERBB2 mouse monoclonal antibody. (Heat-induced epitope retrieval by 10mM citric buffer, pH6.0, 100°C for 10min, [TA503524])



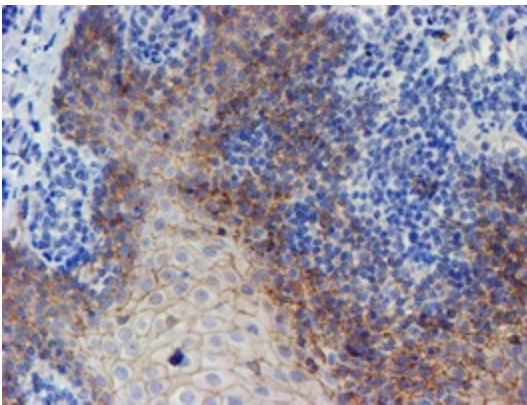
Immunohistochemical staining of paraffin-embedded Adenocarcinoma of Human endometrium tissue using anti-ERBB2 mouse monoclonal antibody. (Heat-induced epitope retrieval by 10mM citric buffer, pH6.0, 100°C for 10min, [TA503524])



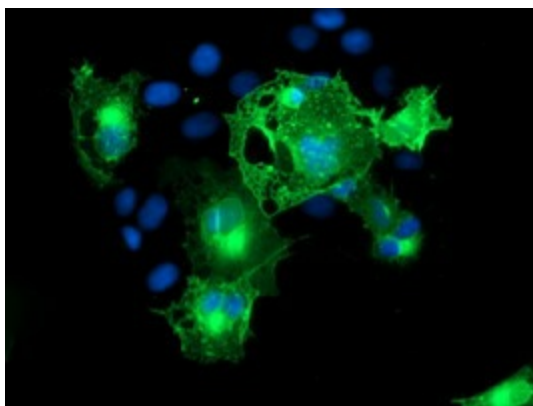
Immunohistochemical staining of paraffin-embedded Human prostate tissue within the normal limits using anti-ERBB2 mouse monoclonal antibody. (Heat-induced epitope retrieval by 10mM citric buffer, pH6.0, 100°C for 10min, [TA503524])



Immunohistochemical staining of paraffin-embedded Carcinoma of Human prostate tissue using anti-ERBB2 mouse monoclonal antibody. (Heat-induced epitope retrieval by 10mM citric buffer, pH6.0, 100°C for 10min, [TA503524])



Immunohistochemical staining of paraffin-embedded Human tonsil within the normal limits using anti-ERBB2 mouse monoclonal antibody. (Heat-induced epitope retrieval by 10mM citric buffer, pH6.0, 100°C for 10min, [TA503524])



Anti-ERBB2 mouse monoclonal antibody ([TA503524]) immunofluorescent staining of COS7 cells transiently transfected by pCMV6-ENTRY ERBB2 ([RC212583]).