

## Product datasheet for **TA503521BM**

### **PVRL1 (NECTIN1) Mouse Monoclonal Antibody (HRP conjugated) [Clone ID: OTI6F8]**

#### **Product data:**

Product Type:	Primary Antibodies
Clone Name:	OTI6F8
Applications:	IF, IHC, WB
Recommended Dilution:	WB 1:2000, IHC 1:150, IF 1:100
Reactivity:	Human
Host:	Mouse
Isotype:	IgG1
Clonality:	Monoclonal
Immunogen:	Full length human recombinant protein of human PVRL1(NP_002846) produced in HEK293T cell.
Formulation:	PBS (pH 7.3) containing 1% BSA, 50% glycerol.
Concentration:	0.5 mg/ml
Purification:	Purified from mouse ascites fluids or tissue culture supernatant by affinity chromatography (protein A/G)
Conjugation:	HRP
Storage:	Store at -20°C as received.
Stability:	Stable for 12 months from date of receipt.
Predicted Protein Size:	54 kDa
Gene Name:	nectin cell adhesion molecule 1
Database Link:	<a href="#">NP_002846</a> <a href="#">Entrez Gene 5818 Human</a> <a href="#">Q15223</a>



[View online »](#)

**Background:**

This gene encodes an adhesion protein that plays a role in the organization of adherens junctions and tight junctions in epithelial and endothelial cells. The protein is a calcium(2+)-independent cell-cell adhesion molecule that belongs to the immunoglobulin superfamily and has 3 extracellular immunoglobulin-like loops, a single transmembrane domain (in some isoforms), and a cytoplasmic region. This protein acts as a receptor for glycoprotein D (gD) of herpes simplex viruses 1 and 2 (HSV-1, HSV-2), and pseudorabies virus (PRV) and mediates viral entry into epithelial and neuronal cells. Mutations in this gene cause cleft lip and palate/ectodermal dysplasia 1 syndrome (CLPED1) as well as non-syndromic cleft lip with or without cleft palate (CL/P). Alternative splicing results in multiple transcript variants encoding proteins with distinct C-termini. [provided by RefSeq]

**Synonyms:**

CD111; CLPED1; ED4; HlgR; HV1S; HVEC; nectin-1; OFC7; PRR; PRR1; PVRL1; PVRR; PVRR1; SK-12

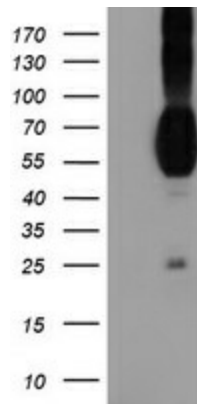
**Protein Families:**

Druggable Genome, ES Cell Differentiation/IPS, Transmembrane

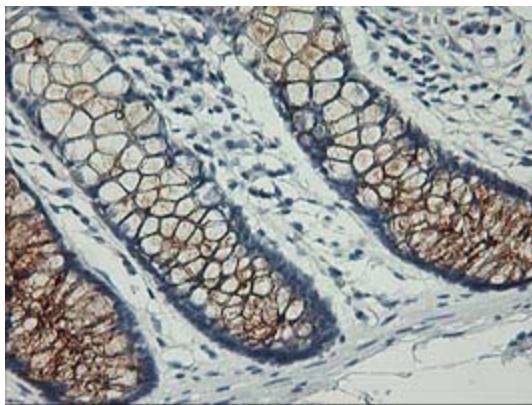
**Protein Pathways:**

Adherens junction, Cell adhesion molecules (CAMs)

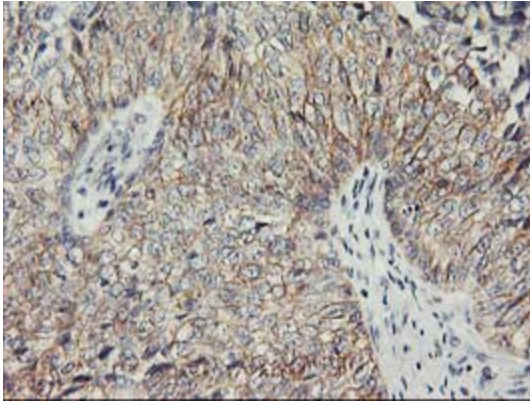
**Product images:**



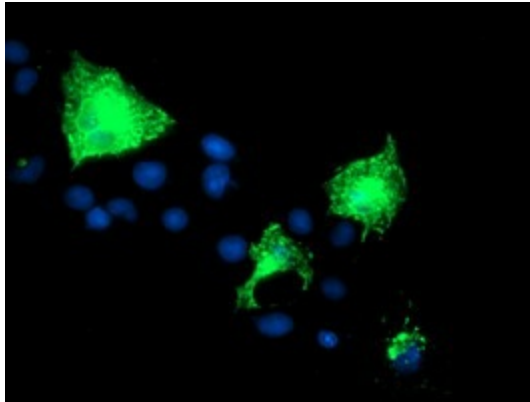
HEK293T cells were transfected with the pCMV6-ENTRY control (Cat# [PS100001], Left lane) or pCMV6-ENTRY PVRL1 (Cat# [RC211214], Right lane) cDNA for 48 hrs and lysed. Equivalent amounts of cell lysates (5 ug per lane) were separated by SDS-PAGE and immunoblotted with anti-PVRL1 (Cat# [TA503521]). Positive lysates [LY419083] (100ug) and [LC419083] (20ug) can be purchased separately from OriGene.



Immunohistochemical staining of paraffin-embedded Adenocarcinoma of Human ovary tissue using anti-PVRL1 mouse monoclonal antibody. (Heat-induced epitope retrieval by 10mM citric buffer, pH6.0, 100°C for 10min, [TA503521])



Immunohistochemical staining of paraffin-embedded Carcinoma of Human bladder tissue using anti-PVRL1 mouse monoclonal antibody. (Heat-induced epitope retrieval by 10mM citric buffer, pH6.0, 100°C for 10min, [TA503521])



Anti-PVRL1 mouse monoclonal antibody ([TA503521]) immunofluorescent staining of COS7 cells transiently transfected by pCMV6-ENTRY PVRL1 ([RC211214]).