

## Product datasheet for **TA503514M**

### CTBP1-DT Mouse Monoclonal Antibody [Clone ID: OTI4F2]

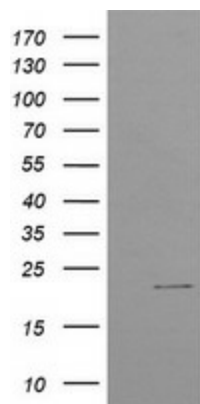
#### Product data:

Product Type:	Primary Antibodies
Clone Name:	OTI4F2
Applications:	FC, WB
Recommended Dilution:	WB 1:2000, FLOW 1:100
Reactivity:	Human
Host:	Mouse
Isotype:	IgG1
Clonality:	Monoclonal
Immunogen:	Human recombinant protein fragment corresponding to amino acids 1-186 of human C4orf42(NP_443093) produced in E.coli.
Formulation:	PBS (pH 7.3) containing 1% BSA, 50% glycerol and 0.02% sodium azide.
Concentration:	1 mg/ml
Purification:	Purified from mouse ascites fluids or tissue culture supernatant by affinity chromatography (protein A/G)
Conjugation:	Unconjugated
Storage:	Store at -20°C as received.
Stability:	Stable for 12 months from date of receipt.
Predicted Protein Size:	19.5 kDa
Gene Name:	CTBP1 divergent transcript
Database Link:	<a href="#">NP_443093</a> <a href="#">Entrez Gene 92070 Human</a>
Synonyms:	MGC21675; MGC149426; MGC149427

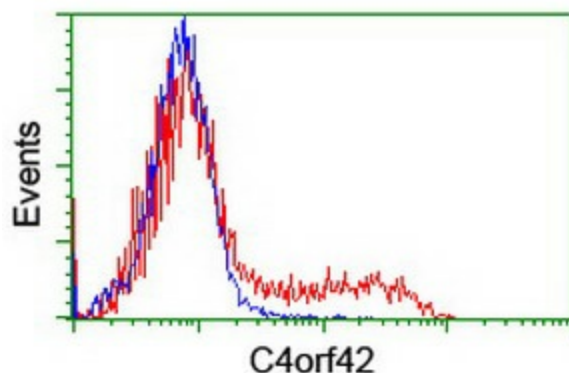


[View online »](#)

## Product images:



HEK293T cells were transfected with the pCMV6-ENTRY control (Cat# [PS100001], Left lane) or pCMV6-ENTRY C4orf42 (Cat# [RC213725], Right lane) cDNA for 48 hrs and lysed. Equivalent amounts of cell lysates (5 ug per lane) were separated by SDS-PAGE and immunoblotted with anti-C4orf42 (Cat# [TA503514]). Positive lysates [LY409437] (100ug) and [LC409437] (20ug) can be purchased separately from OriGene.



HEK293T cells transfected with either [RC213725] overexpress plasmid (Red) or empty vector control plasmid (Blue) were immunostained by anti-C4orf42 antibody ([TA503514]), and then analyzed by flow cytometry.