

## Product datasheet for **TA503514BM**

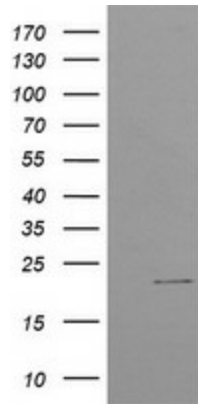
### CTBP1-DT Mouse Monoclonal Antibody (HRP conjugated) [Clone ID: OTI4F2]

#### Product data:

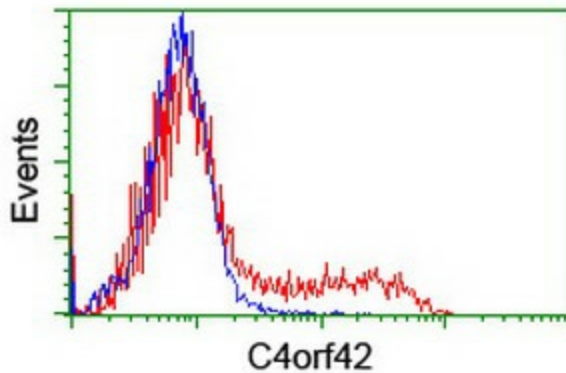
|                         |   |
|-------------------------|---|
| Product Type:           | Primary Antibodies  |
| Clone Name:             | OTI4F2  |
| Applications:           | FC, WB  |
| Recommended Dilution:   | WB 1:2000, FLOW 1:100   |
| Reactivity:             | Human   |
| Host:                   | Mouse   |
| Isotype:                | IgG1  |
| Clonality:              | Monoclonal  |
| Immunogen:              | Human recombinant protein fragment corresponding to amino acids 1-186 of human C4orf42(NP_443093) produced in E.coli. |
| Formulation:            | PBS (pH 7.3) containing 1% BSA, 50% glycerol.   |
| Concentration:          | 0.5 mg/ml   |
| Purification:           | Purified from mouse ascites fluids or tissue culture supernatant by affinity chromatography (protein A/G)             |
| Conjugation:            | HRP   |
| Storage:                | Store at -20°C as received.   |
| Stability:              | Stable for 12 months from date of receipt.  |
| Predicted Protein Size: | 19.5 kDa  |
| Gene Name:              | CTBP1 divergent transcript  |
| Database Link:          | <a href="#">NP_443093</a><br><a href="#">Entrez Gene 92070 Human</a>  |
| Synonyms:               | MGC21675; MGC149426; MGC149427  |



[View online »](#)

**Product images:**

HEK293T cells were transfected with the pCMV6-ENTRY control (Cat# [PS100001], Left lane) or pCMV6-ENTRY C4orf42 (Cat# [RC213725], Right lane) cDNA for 48 hrs and lysed. Equivalent amounts of cell lysates (5 ug per lane) were separated by SDS-PAGE and immunoblotted with anti-C4orf42 (Cat# [TA503514]). Positive lysates [LY409437] (100ug) and [LC409437] (20ug) can be purchased separately from OriGene.



HEK293T cells transfected with either [RC213725] overexpress plasmid (Red) or empty vector control plasmid (Blue) were immunostained by anti-C4orf42 antibody ([TA503514]), and then analyzed by flow cytometry.