

## Product datasheet for **TA503481S**

### Proteasome subunit beta type 4 (PSMB4) Mouse Monoclonal Antibody [Clone ID: OTI7B4]

#### Product data:

Product Type:	Primary Antibodies
Clone Name:	OTI7B4
Applications:	FC, WB
Recommended Dilution:	WB 1:500, FLOW 1:100
Reactivity:	Human, Mouse, Rat
Host:	Mouse
Isotype:	IgG1
Clonality:	Monoclonal
Immunogen:	Full length human recombinant protein of human PSMB4(NP_002787) produced in HEK293T cell.
Formulation:	PBS (pH 7.3) containing 1% BSA, 50% glycerol and 0.02% sodium azide.
Concentration:	0.42 mg/ml
Purification:	Purified from mouse ascites fluids or tissue culture supernatant by affinity chromatography (protein A/G)
Conjugation:	Unconjugated
Storage:	Store at -20°C as received.
Stability:	Stable for 12 months from date of receipt.
Predicted Protein Size:	29 kDa
Gene Name:	proteasome 20S subunit beta 4
Database Link:	<a href="#">NP_002787</a> <a href="#">Entrez Gene 19172 Mouse</a> <a href="#">Entrez Gene 58854 Rat</a> <a href="#">Entrez Gene 5692 Human</a> <a href="#">P28070</a>



[View online »](#)

**Background:**

The proteasome is a multicatalytic proteinase complex with a highly ordered ring-shaped 20S core structure. The core structure is composed of 4 rings of 28 non-identical subunits; 2 rings are composed of 7 alpha subunits and 2 rings are composed of 7 beta subunits. Proteasomes are distributed throughout eukaryotic cells at a high concentration and cleave peptides in an ATP/ubiquitin-dependent process in a non-lysosomal pathway. An essential function of a modified proteasome, the immunoproteasome, is the processing of class I MHC peptides. This gene encodes a member of the proteasome B-type family, also known as the T1B family, that is a 20S core beta subunit. [provided by RefSeq]

**Synonyms:**

HN3; HsN3; PROS-26; PROS26

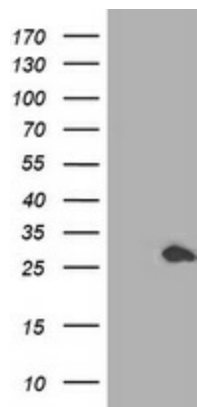
**Protein Families:**

Druggable Genome, Protease

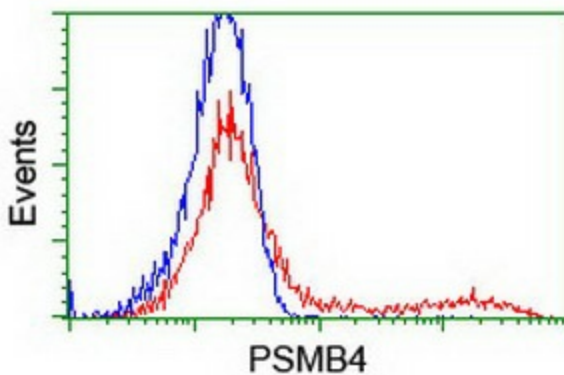
**Protein Pathways:**

Proteasome

**Product images:**



HEK293T cells were transfected with the pCMV6-ENTRY control (Left lane) or pCMV6-ENTRY PSMB4 ([RC205723], Right lane) cDNA for 48 hrs and lysed. Equivalent amounts of cell lysates (5 ug per lane) were separated by SDS-PAGE and immunoblotted with anti-PSMB4. Positive lysates [LY419106] (100ug) and [LC419106] (20ug) can be purchased separately from OriGene.



HEK293T cells transfected with either [RC205723] overexpress plasmid (Red) or empty vector control plasmid (Blue) were immunostained by anti-PSMB4 antibody ([TA503481]), and then analyzed by flow cytometry.