

## Product datasheet for **TA503479S**

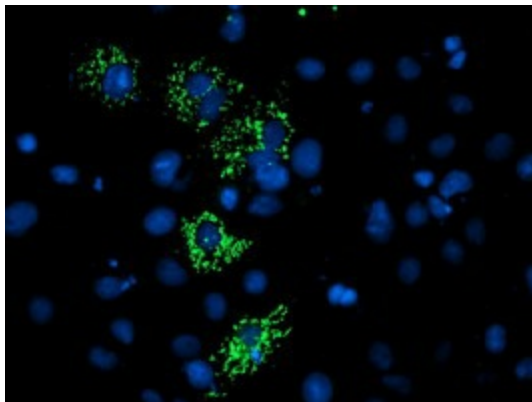
### CTBP1-DT Mouse Monoclonal Antibody [Clone ID: OTI2C6]

#### Product data:

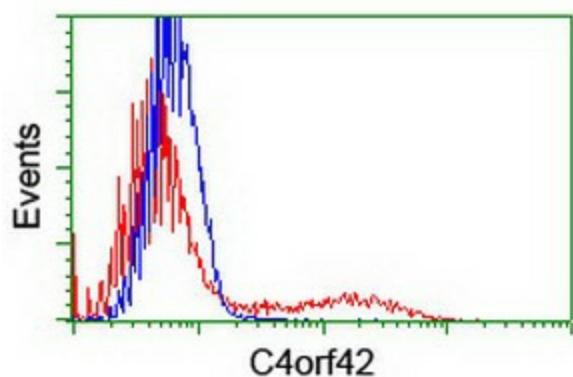
Product Type:	Primary Antibodies
Clone Name:	OTI2C6
Applications:	FC, IF
Recommended Dilution:	IF 1:100, FLOW 1:100
Reactivity:	Human
Host:	Mouse
Isotype:	IgG1
Clonality:	Monoclonal
Immunogen:	Human recombinant protein fragment corresponding to amino acids 1-186 of human C4orf42(NP_443093) produced in E.coil.
Formulation:	PBS (pH 7.3) containing 1% BSA, 50% glycerol and 0.02% sodium azide.
Concentration:	4.03 mg/ml
Purification:	Purified from mouse ascites fluids or tissue culture supernatant by affinity chromatography (protein A/G)
Conjugation:	Unconjugated
Storage:	Store at -20°C as received.
Stability:	Stable for 12 months from date of receipt.
Predicted Protein Size:	19.5 kDa
Gene Name:	CTBP1 divergent transcript
Database Link:	<a href="#">NP_443093</a> <a href="#">Entrez Gene 92070 Human</a>
Synonyms:	MGC21675; MGC149426; MGC149427



[View online »](#)

**Product images:**

Anti-C4orf42 mouse monoclonal antibody ([TA503479]) immunofluorescent staining of COS7 cells transiently transfected by pCMV6-ENTRY C4orf42 ([RC213725]).



HEK293T cells transfected with either [RC213725] overexpress plasmid (Red) or empty vector control plasmid (Blue) were immunostained by anti-C4orf42 antibody ([TA503479]), and then analyzed by flow cytometry.