

Product datasheet for **TA503470BM**

FDFT1 Mouse Monoclonal Antibody (HRP conjugated) [Clone ID: OTI2F10]

Product data:

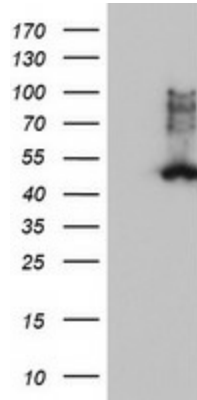
Product Type:	Primary Antibodies
Clone Name:	OTI2F10
Applications:	IF, IHC, WB
Recommended Dilution:	WB 1:200~500, IHC 1:150, IF 1:100
Reactivity:	Human, Monkey, Mouse, Rat
Host:	Mouse
Isotype:	IgG2a
Clonality:	Monoclonal
Immunogen:	Full length human recombinant protein of human FDFT1(NP_004453) produced in HEK293T cell.
Formulation:	PBS (pH 7.3) containing 1% BSA, 50% glycerol.
Concentration:	0.5 mg/ml
Purification:	Purified from mouse ascites fluids or tissue culture supernatant by affinity chromatography (protein A/G)
Conjugation:	HRP
Storage:	Store at -20°C as received.
Stability:	Stable for 12 months from date of receipt.
Predicted Protein Size:	47.9 kDa
Gene Name:	farnesyl-diphosphate farnesyltransferase 1
Database Link:	NP_004453 Entrez Gene 14137 Mouse Entrez Gene 29580 Rat Entrez Gene 696396 Monkey Entrez Gene 2222 Human P37268
Background:	This gene encodes a membrane-associated enzyme located at a branch point in the mevalonate pathway. The encoded protein is the first specific enzyme in cholesterol biosynthesis, catalyzing the dimerization of two molecules of farnesyl diphosphate in a two-step reaction to form squalene. [provided by RefSeq]



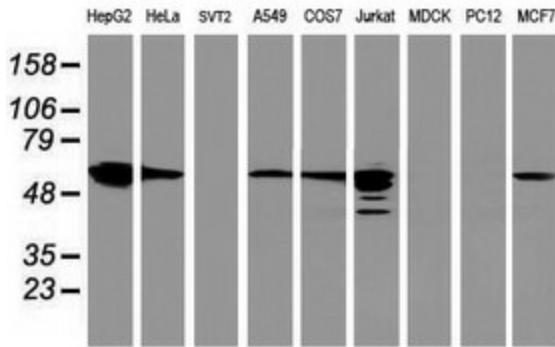
[View online »](#)

Synonyms: DGPT; ERG9; SQS; SS
Protein Families: Druggable Genome
Protein Pathways: Metabolic pathways, Steroid biosynthesis

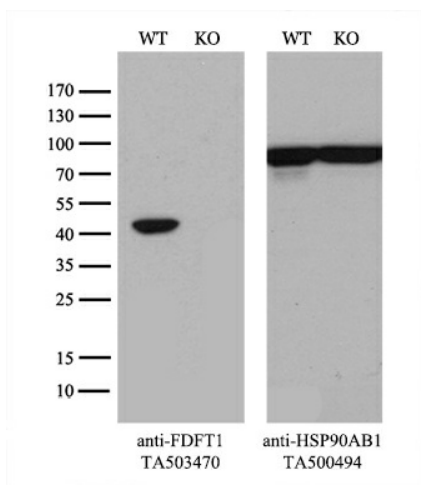
Product images:



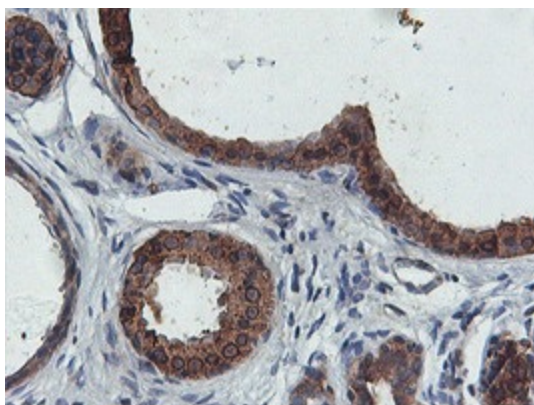
HEK293T cells were transfected with the pCMV6-ENTRY control (Cat# [PS100001], Left lane) or pCMV6-ENTRY FDFT1 (Cat# [RC201392], Right lane) cDNA for 48 hrs and lysed. Equivalent amounts of cell lysates (5 ug per lane) were separated by SDS-PAGE and immunoblotted with anti-FDFT1(Cat# [TA503470]). Positive lysates [LY401419] (100ug) and [LC401419] (20ug) can be purchased separately from OriGene.



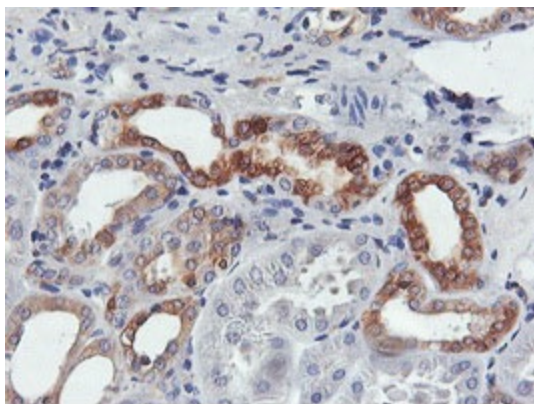
Western blot analysis of extracts (35ug) from 9 different cell lines by using anti-FDFT1 monoclonal antibody.



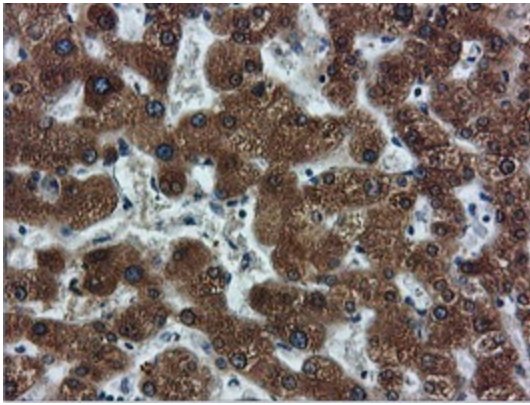
Equivalent amounts of cell lysates (10 ug per lane) of wild-type 293T cells (WT, Cat# LC810293T) and FDFT1-Knockout 293T cells (KO, Cat# [LC841996]) were separated by SDS-PAGE and immunoblotted with anti-FDFT1 monoclonal antibody [TA503470], (1:500). Then the blotted membrane was stripped and reprobed with anti-HSP90AB1 antibody ([TA500494]) as a loading control.



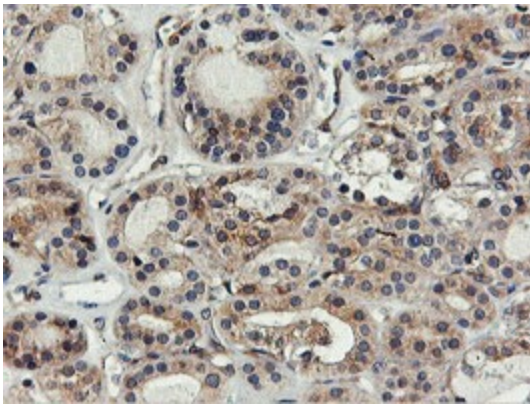
Immunohistochemical staining of paraffin-embedded Human breast tissue within the normal limits using anti-FDFT1 mouse monoclonal antibody. (Heat-induced epitope retrieval by 10mM citric buffer, pH6.0, 100°C for 10min, [TA503470])



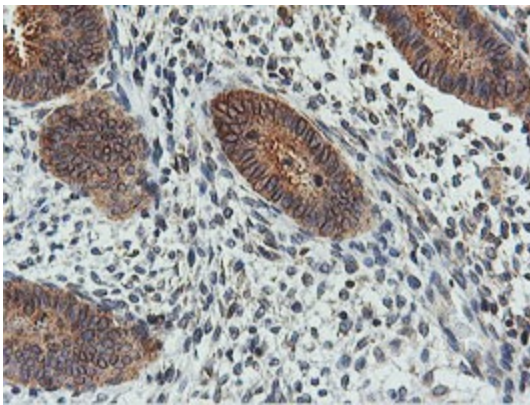
Immunohistochemical staining of paraffin-embedded Human Kidney tissue within the normal limits using anti-FDFT1 mouse monoclonal antibody. (Heat-induced epitope retrieval by 10mM citric buffer, pH6.0, 100°C for 10min, [TA503470])



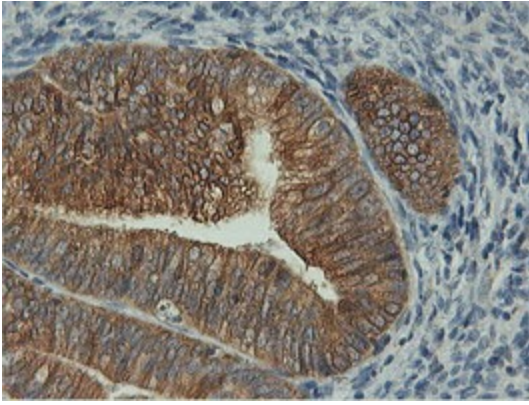
Immunohistochemical staining of paraffin-embedded Human liver tissue within the normal limits using anti-FDFT1 mouse monoclonal antibody. (Heat-induced epitope retrieval by 10mM citric buffer, pH6.0, 100°C for 10min, [TA503470])



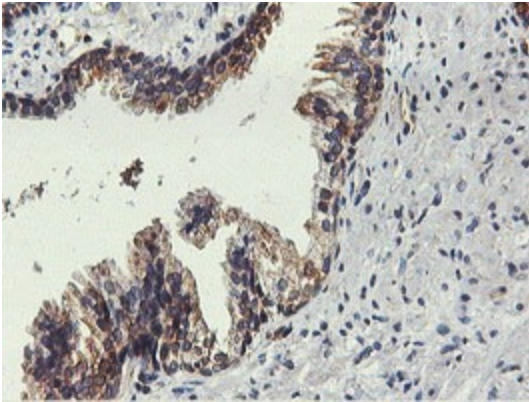
Immunohistochemical staining of paraffin-embedded Carcinoma of Human thyroid tissue using anti-FDFT1 mouse monoclonal antibody. (Heat-induced epitope retrieval by 10mM citric buffer, pH6.0, 100°C for 10min, [TA503470])



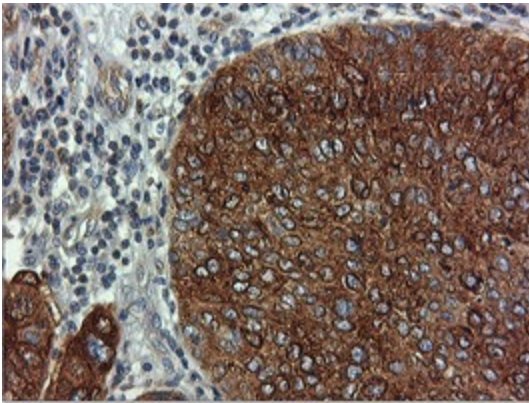
Immunohistochemical staining of paraffin-embedded Human endometrium tissue within the normal limits using anti-FDFT1 mouse monoclonal antibody. (Heat-induced epitope retrieval by 10mM citric buffer, pH6.0, 100°C for 10min, [TA503470])



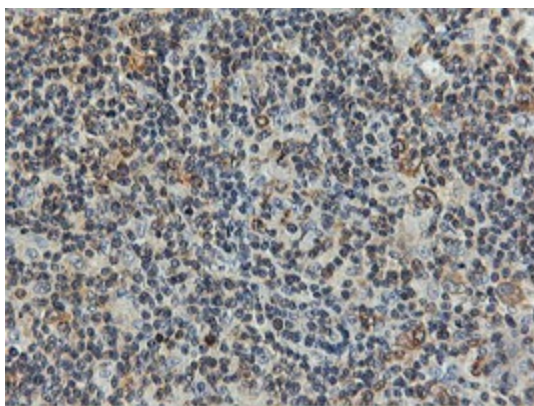
Immunohistochemical staining of paraffin-embedded Adenocarcinoma of Human endometrium tissue using anti-FDFT1 mouse monoclonal antibody. (Heat-induced epitope retrieval by 10mM citric buffer, pH6.0, 100°C for 10min, [TA503470])



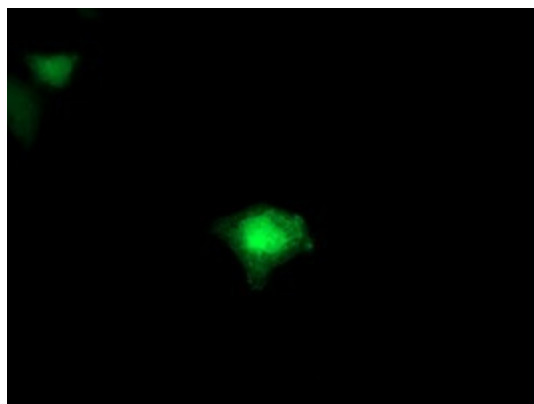
Immunohistochemical staining of paraffin-embedded Human prostate tissue within the normal limits using anti-FDFT1 mouse monoclonal antibody. (Heat-induced epitope retrieval by 10mM citric buffer, pH6.0, 100°C for 10min, [TA503470])



Immunohistochemical staining of paraffin-embedded Carcinoma of Human bladder tissue using anti-FDFT1 mouse monoclonal antibody. (Heat-induced epitope retrieval by 10mM citric buffer, pH6.0, 100°C for 10min, [TA503470])



Immunohistochemical staining of paraffin-embedded Human lymphoma tissue using anti-FDFT1 mouse monoclonal antibody. (Heat-induced epitope retrieval by 10mM citric buffer, pH6.0, 100°C for 10min, [TA503470])



Anti-FDFT1 mouse monoclonal antibody ([TA503470]) immunofluorescent staining of COS7 cells transiently transfected by pCMV6-ENTRY FDFT1 ([RC201392]).