

Product datasheet for **TA503453S**

LGALS3BP Mouse Monoclonal Antibody [Clone ID: OTI6B7]

Product data:

Product Type:	Primary Antibodies
Clone Name:	OTI6B7
Applications:	FC, IHC, WB
Recommended Dilution:	WB 1:200~500, IHC 1:150, FLOW 1:100
Reactivity:	Human
Host:	Mouse
Isotype:	IgG2a
Clonality:	Monoclonal
Immunogen:	Human recombinant protein fragment corresponding to amino acids 19-300 of human LGALS3BP(NP_005558) produced in E.coil.
Formulation:	PBS (pH 7.3) containing 1% BSA, 50% glycerol and 0.02% sodium azide.
Concentration:	1 mg/ml
Purification:	Purified from mouse ascites fluids or tissue culture supernatant by affinity chromatography (protein A/G)
Conjugation:	Unconjugated
Storage:	Store at -20°C as received.
Stability:	Stable for 12 months from date of receipt.
Predicted Protein Size:	65.2 kDa
Gene Name:	galectin 3 binding protein
Database Link:	NP_005558 Entrez Gene 3959 Human Q08380



[View online »](#)

Background:

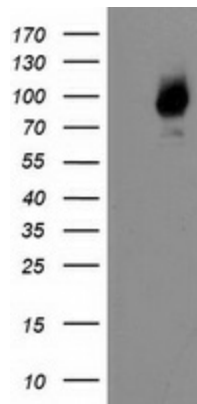
The galectins are a family of beta-galactoside-binding proteins implicated in modulating cell-cell and cell-matrix interactions. LGALS3BP has been found elevated in the serum of patients with cancer and in those infected by the human immunodeficiency virus (HIV). It appears to be implicated in immune response associated with natural killer (NK) and lymphokine-activated killer (LAK) cell cytotoxicity. Using fluorescence in situ hybridization the full length 90K cDNA has been localized to chromosome 17q25. The native protein binds specifically to a human macrophage-associated lectin known as Mac-2 and also binds galectin 1. [provided by RefSeq]

Synonyms:

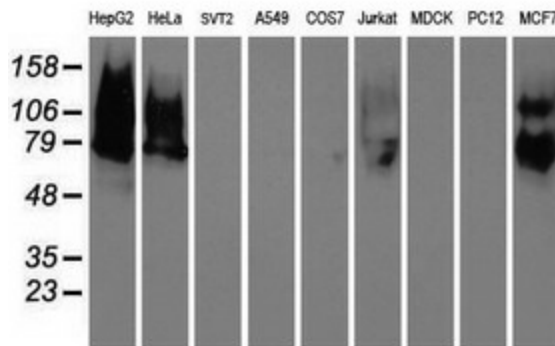
90K; BTBD17B; CyCAP; gp90; M2BP; MAC-2-BP; TANGO10B

Protein Families:

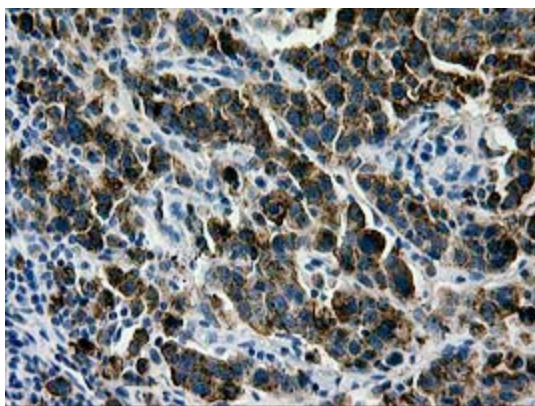
Druggable Genome, Secreted Protein

Product images:


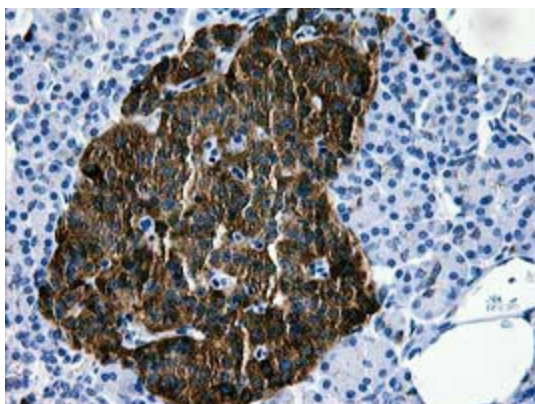
HEK293T cells were transfected with the pCMV6-ENTRY control (Left lane) or pCMV6-ENTRY LGALS3BP ([RC204918], Right lane) cDNA for 48 hrs and lysed. Equivalent amounts of cell lysates (5 ug per lane) were separated by SDS-PAGE and immunoblotted with anti-LGALS3BP. Positive lysates [LY417206] (100ug) and [LC417206] (20ug) can be purchased separately from OriGene.



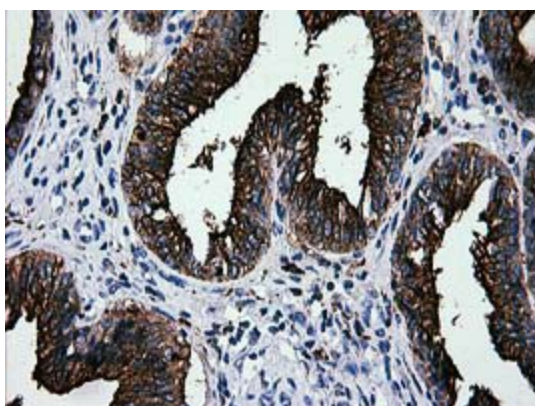
Western blot analysis of extracts (35ug) from 9 different cell lines by using anti-LGALS3BP monoclonal antibody.



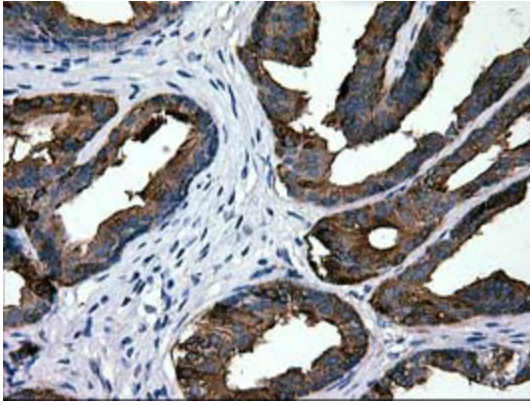
Immunohistochemical staining of paraffin-embedded Carcinoma of Human lung tissue using anti-LGALS3BP mouse monoclonal antibody. (Heat-induced epitope retrieval by 10mM citric buffer, pH6.0, 100°C for 10min, [TA503453])



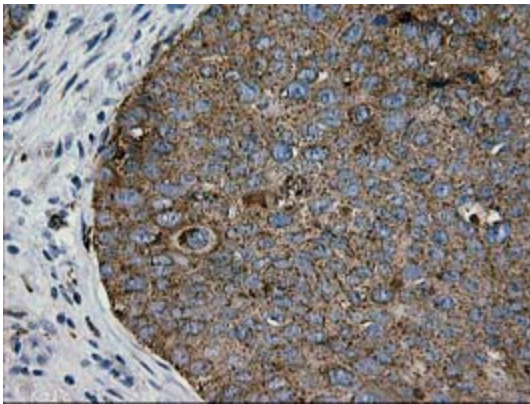
Immunohistochemical staining of paraffin-embedded Human pancreas tissue within the normal limits using anti-LGALS3BP mouse monoclonal antibody. (Heat-induced epitope retrieval by 10mM citric buffer, pH6.0, 100°C for 10min, [TA503453])



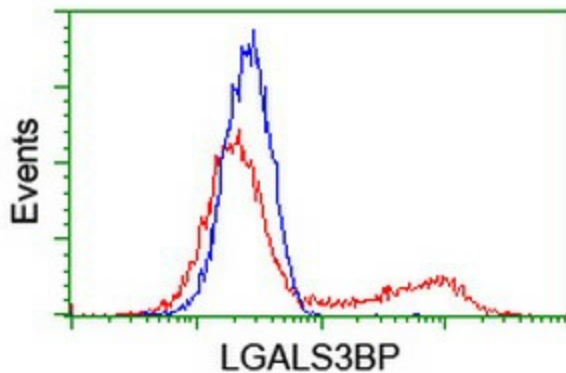
Immunohistochemical staining of paraffin-embedded Adenocarcinoma of Human endometrium tissue using anti-LGALS3BP mouse monoclonal antibody. (Heat-induced epitope retrieval by 10mM citric buffer, pH6.0, 100°C for 10min, [TA503453])



Immunohistochemical staining of paraffin-embedded Human prostate tissue within the normal limits using anti-LGALS3BP mouse monoclonal antibody. (Heat-induced epitope retrieval by 10mM citric buffer, pH6.0, 100°C for 10min, [TA503453])



Immunohistochemical staining of paraffin-embedded Carcinoma of Human bladder tissue using anti-LGALS3BP mouse monoclonal antibody. (Heat-induced epitope retrieval by 10mM citric buffer, pH6.0, 100°C for 10min, [TA503453])



HEK293T cells transfected with either [RC204918] overexpress plasmid (Red) or empty vector control plasmid (Blue) were immunostained by anti-LGALS3BP antibody ([TA503453]), and then analyzed by flow cytometry.