

Product datasheet for **TA503435M**

Cytochrome P450 17A1 (CYP17A1) Mouse Monoclonal Antibody [Clone ID: OTI3F12]

Product data:

Product Type:	Primary Antibodies
Clone Name:	OTI3F12
Applications:	WB
Recommended Dilution:	WB 1:500
Reactivity:	Human
Host:	Mouse
Isotype:	IgG1
Clonality:	Monoclonal
Immunogen:	Full length human recombinant protein of human CYP17A1(NP_000093) produced in HEK293T cell.
Formulation:	PBS (pH 7.3) containing 1% BSA, 50% glycerol and 0.02% sodium azide.
Concentration:	1 mg/ml
Purification:	Purified from mouse ascites fluids or tissue culture supernatant by affinity chromatography (protein A/G)
Conjugation:	Unconjugated
Storage:	Store at -20°C as received.
Stability:	Stable for 12 months from date of receipt.
Predicted Protein Size:	57.2 kDa
Gene Name:	cytochrome P450 family 17 subfamily A member 1
Database Link:	NP_000093 Entrez Gene 1586 Human P05093

[View online »](#)

Background:

This gene encodes a member of the cytochrome P450 superfamily of enzymes. The cytochrome P450 proteins are monooxygenases which catalyze many reactions involved in drug metabolism and synthesis of cholesterol, steroids and other lipids. This protein localizes to the endoplasmic reticulum. It has both 17 α -hydroxylase and 17,20-lyase activities and is a key enzyme in the steroidogenic pathway that produces progestins, mineralocorticoids, glucocorticoids, androgens, and estrogens. Mutations in this gene are associated with isolated steroid-17 α -hydroxylase deficiency, 17- α -hydroxylase/17,20-lyase deficiency, pseudohermaphroditism, and adrenal hyperplasia. [provided by RefSeq, Jul 2008]

Synonyms:

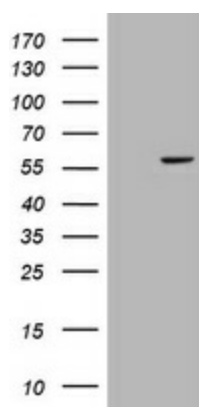
CPT7; CYP17; P450C17; S17AH

Protein Families:

Druggable Genome, P450

Protein Pathways:

C21-Steroid hormone metabolism, Metabolic pathways

Product images:


HEK293T cells were transfected with the pCMV6-ENTRY control (Left lane) or pCMV6-ENTRY CYP17A1 ([RC209042], Right lane) cDNA for 48 hrs and lysed. Equivalent amounts of cell lysates (5 ug per lane) were separated by SDS-PAGE and immunoblotted with anti-CYP17A1. Positive lysates [LY400030] (100ug) and [LC400030] (20ug) can be purchased separately from OriGene.