

## Product datasheet for **TA503422BM**

### Lipoamide Dehydrogenase (DLD) Mouse Monoclonal Antibody (HRP conjugated) [Clone ID: OTI4A10]

#### Product data:

Product Type:	Primary Antibodies
Clone Name:	OTI4A10
Applications:	FC, IF, IHC, WB
Recommended Dilution:	WB 1:2000, IHC 1:150, IF 1:100, FLOW 1:100
Reactivity:	Human, Mouse, Rat
Host:	Mouse
Isotype:	IgG1
Clonality:	Monoclonal
Immunogen:	Full length human recombinant protein of human DLD(NP_000099) produced in HEK293T cell.
Formulation:	PBS (pH 7.3) containing 1% BSA, 50% glycerol.
Concentration:	0.5 mg/ml
Purification:	Purified from mouse ascites fluids or tissue culture supernatant by affinity chromatography (protein A/G)
Conjugation:	HRP
Storage:	Store at -20°C as received.
Stability:	Stable for 12 months from date of receipt.
Predicted Protein Size:	50.1 kDa
Gene Name:	dihydrolipoamide dehydrogenase
Database Link:	<a href="#">NP_000099</a> <a href="#">Entrez Gene 13382 Mouse</a> <a href="#">Entrez Gene 298942 Rat</a> <a href="#">Entrez Gene 1738 Human</a> <a href="#">P09622</a>



[View online »](#)

**Background:**

This gene encodes the L protein of the mitochondrial glycine cleavage system. The L protein, also named dihydrolipoamide dehydrogenase, is also a component of the pyruvate dehydrogenase complex, the alpha-ketoglutarate dehydrogenase complex, and the branched-chain alpha-keto acid dehydrogenase complex. Mutations in this gene have been identified in patients with E3-deficient maple syrup urine disease and lipoamide dehydrogenase deficiency. [provided by RefSeq]

**Synonyms:**

DLDD; DLDH; E3; GCSL; LAD; PHE3

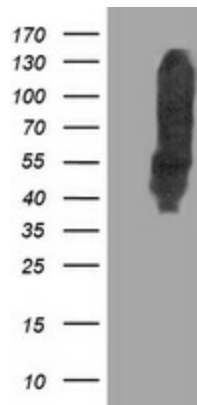
**Protein Families:**

Druggable Genome

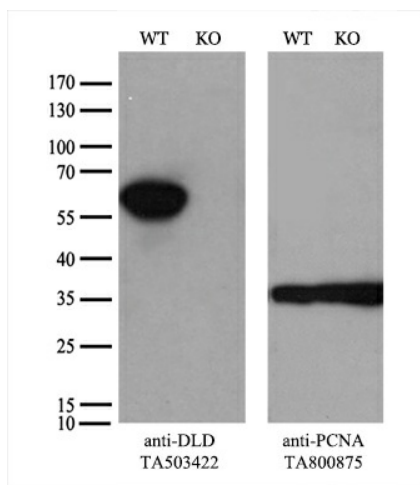
**Protein Pathways:**

Citrate cycle (TCA cycle), Glycine, serine and threonine metabolism, Glycolysis / Gluconeogenesis, Metabolic pathways, Pyruvate metabolism, Valine, leucine and isoleucine degradation

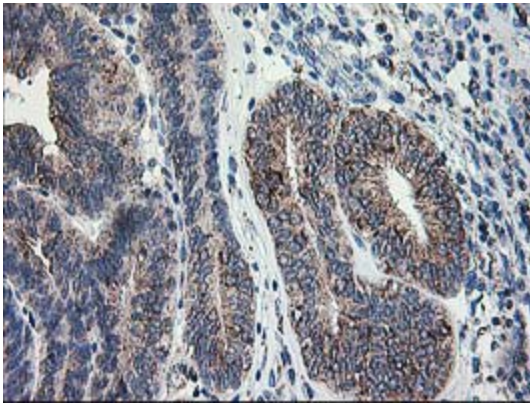
**Product images:**



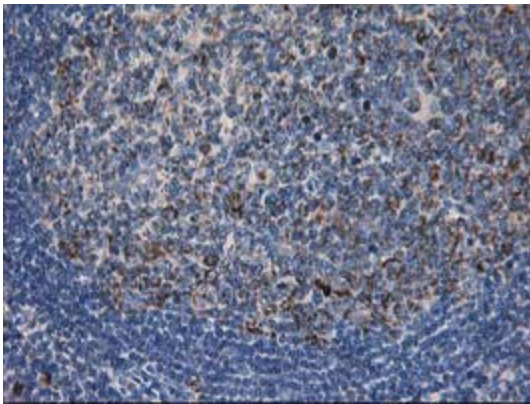
HEK293T cells were transfected with the pCMV6-ENTRY control (Left lane) or pCMV6-ENTRY DLD ([RC200639], Right lane) cDNA for 48 hrs and lysed. Equivalent amounts of cell lysates (5 ug per lane) were separated by SDS-PAGE and immunoblotted with anti-DLD. Positive lysates [LY400041] (100ug) and [LC400041] (20ug) can be purchased separately from OriGene.



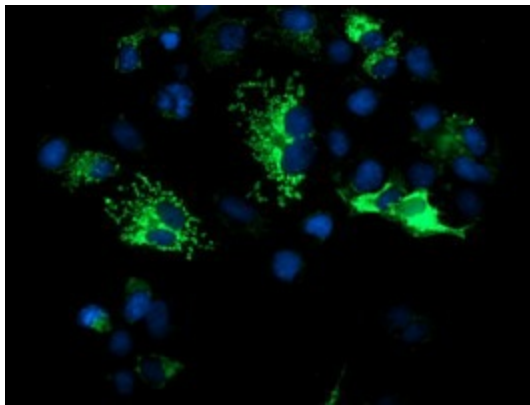
Equivalent amounts of cell lysates (10 ug per lane) of wild-type HeLa cells (WT, Cat# LC810HELA) and DLD-Knockout HeLa cells (KO, Cat# [LC832718]) were separated by SDS-PAGE and immunoblotted with anti-DLD monoclonal antibody [TA503422] (1:500). Then the blotted membrane was stripped and reprobbed with anti-PCNA antibody as a loading control.



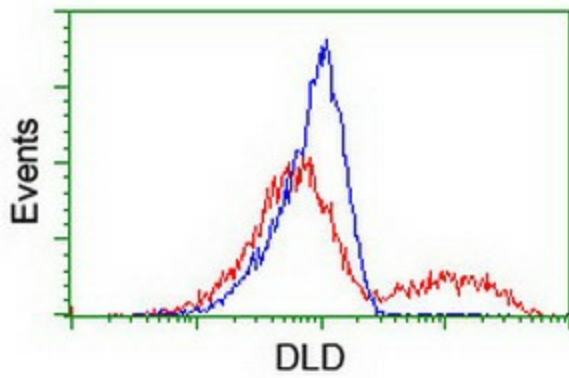
Immunohistochemical staining of paraffin-embedded Adenocarcinoma of Human endometrium tissue using anti-DLD mouse monoclonal antibody. (Heat-induced epitope retrieval by 10mM citric buffer, pH6.0, 100°C for 10min, [TA503422])



Immunohistochemical staining of paraffin-embedded Human lymph node tissue within the normal limits using anti-DLD mouse monoclonal antibody. (Heat-induced epitope retrieval by 10mM citric buffer, pH6.0, 100°C for 10min, [TA503422])



Anti-DLD mouse monoclonal antibody ([TA503422]) immunofluorescent staining of COS7 cells transiently transfected by pCMV6-ENTRY DLD ([RC200639]).



HEK293T cells transfected with either [RC200639] overexpress plasmid (Red) or empty vector control plasmid (Blue) were immunostained by anti-DLD antibody ([TA503422]), and then analyzed by flow cytometry.