

## Product datasheet for **TA503419BM**

### CCM2 Mouse Monoclonal Antibody (HRP conjugated) [Clone ID: OTI1D1]

#### Product data:

Product Type:	Primary Antibodies
Clone Name:	OTI1D1
Applications:	WB
Recommended Dilution:	WB 1:2000
Reactivity:	Human, Mouse, Rat
Host:	Mouse
Isotype:	IgG2a
Clonality:	Monoclonal
Immunogen:	Full length human recombinant protein of human CCM2(NP_113631) produced in HEK293T cell.
Formulation:	PBS (pH 7.3) containing 1% BSA, 50% glycerol.
Concentration:	0.5 mg/ml
Purification:	Purified from mouse ascites fluids or tissue culture supernatant by affinity chromatography (protein A/G)
Conjugation:	HRP
Storage:	Store at -20°C as received.
Stability:	Stable for 12 months from date of receipt.
Predicted Protein Size:	48.7 kDa
Gene Name:	CCM2 scaffold protein
Database Link:	<a href="#">NP_113631</a> <a href="#">Entrez Gene 216527 Mouse</a> <a href="#">Entrez Gene 305505 Rat</a> <a href="#">Entrez Gene 83605 Human</a> <a href="#">Q9BSQ5</a>



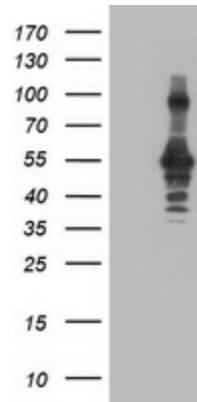
[View online »](#)

**Background:**

This gene encodes a scaffold protein that functions in the stress-activated p38 Mitogen-activated protein kinase (MAPK) signaling cascade. The protein interacts with SMAD specific E3 ubiquitin protein ligase 1 (also known as SMURF1) via a phosphotyrosine binding domain to promote RhoA degradation. The protein is required for normal cytoskeletal structure, cell-cell interactions, and lumen formation in endothelial cells. Mutations in this gene result in cerebral cavernous malformations. Multiple transcript variants encoding different isoforms have been found for this gene.

**Synonyms:**

C7orf22; OSM; PP10187

**Product images:**

HEK293T cells were transfected with the pCMV6-ENTRY control (Left lane) or pCMV6-ENTRY CCM2 ([RC201418], Right lane) cDNA for 48 hrs and lysed. Equivalent amounts of cell lysates (5 ug per lane) were separated by SDS-PAGE and immunoblotted with anti-CCM2. Positive lysates [LY410516] (100ug) and [LC410516] (20ug) can be purchased separately from OriGene.