

## Product datasheet for **TA503402AM**

### PGAM2 Mouse Monoclonal Antibody (Biotin conjugated) [Clone ID: OTI1C1]

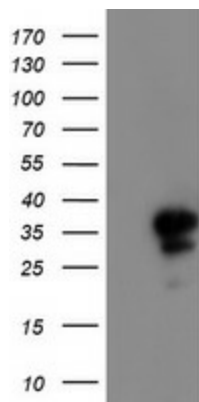
#### Product data:

Product Type:	Primary Antibodies
Clone Name:	OTI1C1
Applications:	IHC, WB
Recommended Dilution:	WB 1:2000, IHC 1:150
Reactivity:	Human, Mouse, Rat
Host:	Mouse
Isotype:	IgG2b
Clonality:	Monoclonal
Immunogen:	Full length human recombinatn protein of human PGAM2(NP_000281) produced in HEK293T cell.
Formulation:	PBS (pH 7.3) containing 1% BSA, 50% glycerol and 0.02% sodium azide.
Concentration:	0.5 mg/ml
Purification:	Purified from mouse ascites fluids or tissue culture supernatant by affinity chromatography (protein A/G)
Conjugation:	Biotin
Storage:	Store at -20°C as received.
Stability:	Stable for 12 months from date of receipt.
Predicted Protein Size:	28.6 kDa
Gene Name:	phosphoglycerate mutase 2
Database Link:	<a href="#">NP_000281</a> <a href="#">Entrez Gene 24959 Rat</a> <a href="#">Entrez Gene 56012 Mouse</a> <a href="#">Entrez Gene 5224 Human</a> <a href="#">P15259</a>
Background:	Phosphoglycerate mutase (PGAM) catalyzes the reversible reaction of 3-phosphoglycerate (3-PGA) to 2-phosphoglycerate (2-PGA) in the glycolytic pathway. The PGAM is a dimeric enzyme containing, in different tissues, different proportions of a slow-migrating muscle (MM) isozyme, a fast-migrating brain (BB) isozyme, and a hybrid form (MB). This gene encodes muscle-specific PGAM subunit. Mutations in this gene cause muscle phosphoglycerate mutase efficiency, also known as glycogen storage disease X. [provided by RefSeq]

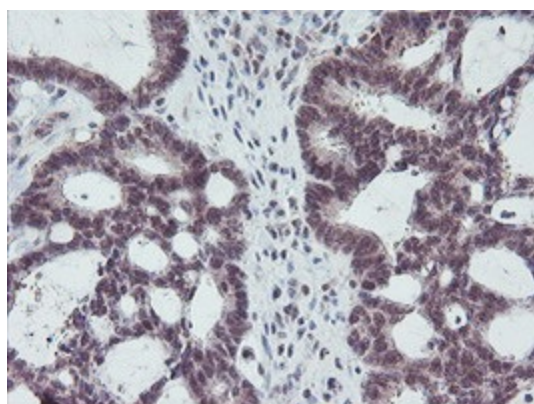


[View online »](#)

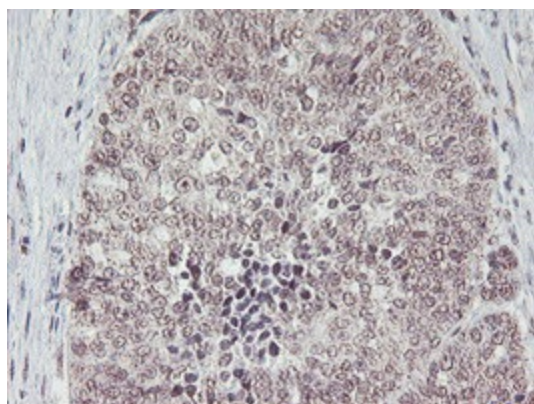
**Synonyms:** GSD10; PGAM-M; PGAMM  
**Protein Families:** Druggable Genome  
**Protein Pathways:** Glycolysis / Gluconeogenesis, Metabolic pathways

**Product images:**


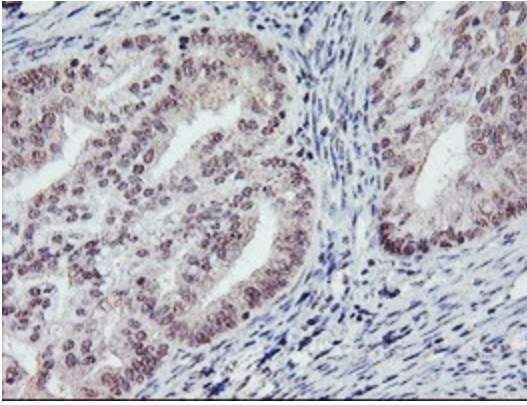
HEK293T cells were transfected with the pCMV6-ENTRY control (Left lane) or pCMV6-ENTRY PGAM2 ([RC200701], Right lane) cDNA for 48 hrs and lysed. Equivalent amounts of cell lysates (5 ug per lane) were separated by SDS-PAGE and immunoblotted with anti-PGAM2. Positive lysates [LY424823] (100ug) and [LC424823] (20ug) can be purchased separately from OriGene.



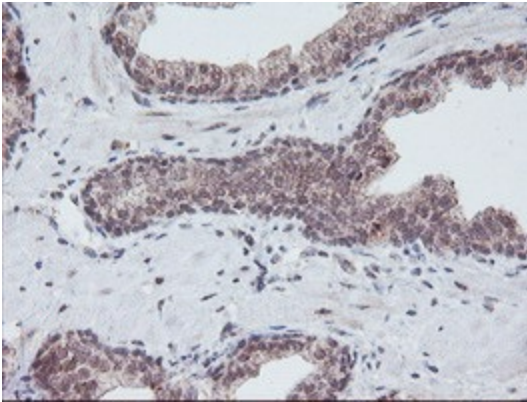
Immunohistochemical staining of paraffin-embedded Adenocarcinoma of Human colon tissue using anti-PGAM2 mouse monoclonal antibody. (Heat-induced epitope retrieval by 10mM citric buffer, pH6.0, 100°C for 10min, [TA503402])



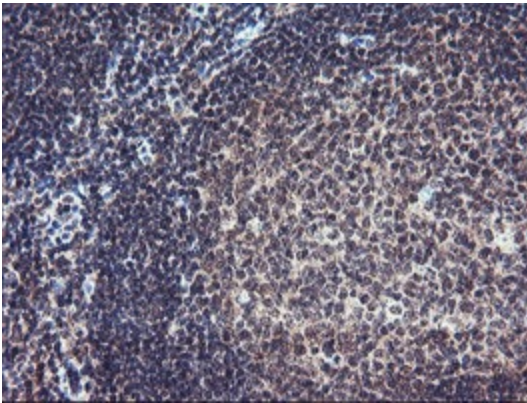
Immunohistochemical staining of paraffin-embedded Adenocarcinoma of Human ovary tissue using anti-PGAM2 mouse monoclonal antibody. (Heat-induced epitope retrieval by 10mM citric buffer, pH6.0, 100°C for 10min, [TA503402])



Immunohistochemical staining of paraffin-embedded Adenocarcinoma of Human endometrium tissue using anti-PGAM2 mouse monoclonal antibody. (Heat-induced epitope retrieval by 10mM citric buffer, pH6.0, 100°C for 10min, [TA503402])



Immunohistochemical staining of paraffin-embedded Carcinoma of Human prostate tissue using anti-PGAM2 mouse monoclonal antibody. (Heat-induced epitope retrieval by 10mM citric buffer, pH6.0, 100°C for 10min, [TA503402])



Immunohistochemical staining of paraffin-embedded Human tonsil within the normal limits using anti-PGAM2 mouse monoclonal antibody. (Heat-induced epitope retrieval by 10mM citric buffer, pH6.0, 100°C for 10min, [TA503402])