

Product datasheet for **TA503387AM**

Lipoamide Dehydrogenase (DLD) Mouse Monoclonal Antibody (Biotin conjugated) [Clone ID: OTI6D5]

Product data:

Product Type:	Primary Antibodies
Clone Name:	OTI6D5
Applications:	FC, IF, IHC, WB
Recommended Dilution:	WB 1:2000, IHC 1:150, IF 1:100, FLOW 1:100
Reactivity:	Human, Mouse, Rat
Host:	Mouse
Isotype:	IgG1
Clonality:	Monoclonal
Immunogen:	Full length human recombinant protein of human DLD(NP_000099) produced in HEK293T cell.
Formulation:	PBS (pH 7.3) containing 1% BSA, 50% glycerol and 0.02% sodium azide.
Concentration:	0.5 mg/ml
Purification:	Purified from mouse ascites fluids or tissue culture supernatant by affinity chromatography (protein A/G)
Conjugation:	Biotin
Storage:	Store at -20°C as received.
Stability:	Stable for 12 months from date of receipt.
Predicted Protein Size:	50.1 kDa
Gene Name:	dihydrolipoamide dehydrogenase
Database Link:	NP_000099 Entrez Gene 13382 Mouse Entrez Gene 298942 Rat Entrez Gene 1738 Human P09622



[View online »](#)

Background:

This gene encodes the L protein of the mitochondrial glycine cleavage system. The L protein, also named dihydrolipoamide dehydrogenase, is also a component of the pyruvate dehydrogenase complex, the alpha-ketoglutarate dehydrogenase complex, and the branched-chain alpha-keto acid dehydrogenase complex. Mutations in this gene have been identified in patients with E3-deficient maple syrup urine disease and lipoamide dehydrogenase deficiency. [provided by RefSeq]

Synonyms:

DLDD; DLDH; E3; GCSL; LAD; PHE3

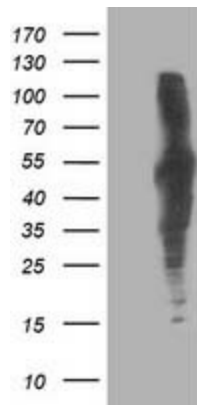
Protein Families:

Druggable Genome

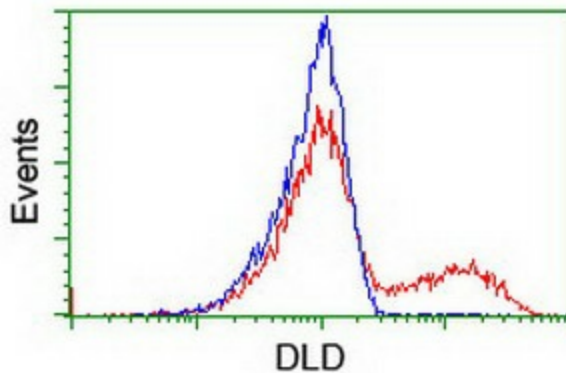
Protein Pathways:

Citrate cycle (TCA cycle), Glycine, serine and threonine metabolism, Glycolysis / Gluconeogenesis, Metabolic pathways, Pyruvate metabolism, Valine, leucine and isoleucine degradation

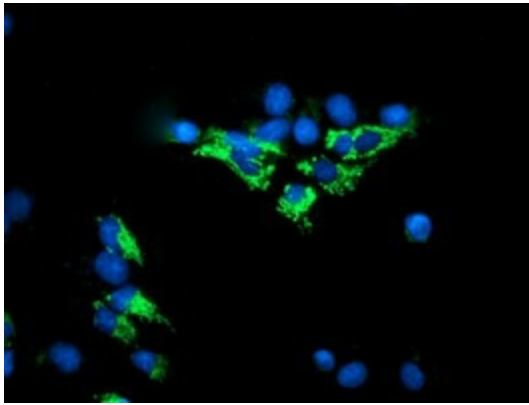
Product images:



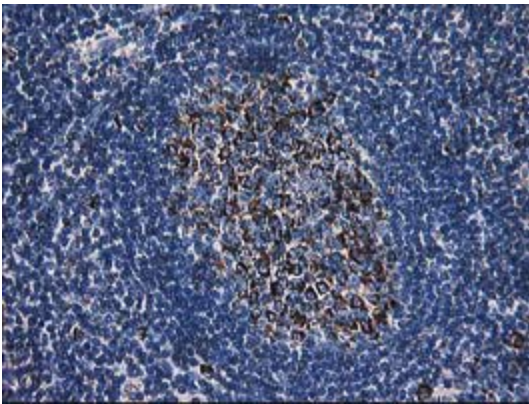
HEK293T cells were transfected with the pCMV6-ENTRY control (Cat# [PS100001], Left lane) or pCMV6-ENTRY DLD (Cat# [RC200639], Right lane) cDNA for 48 hrs and lysed. Equivalent amounts of cell lysates (5 ug per lane) were separated by SDS-PAGE and immunoblotted with anti-DLD (Cat# [TA503387]). Positive lysates [LY400041] (100ug) and [LC400041] (20ug) can be purchased separately from OriGene.



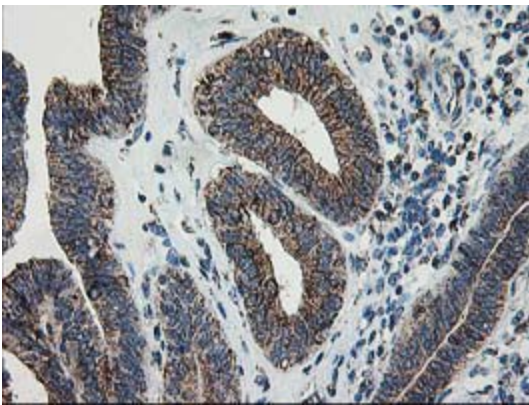
HEK293T cells transfected with either [RC200639] overexpress plasmid (Red) or empty vector control plasmid (Blue) were immunostained by anti-DLD antibody ([TA503387]), and then analyzed by flow cytometry.



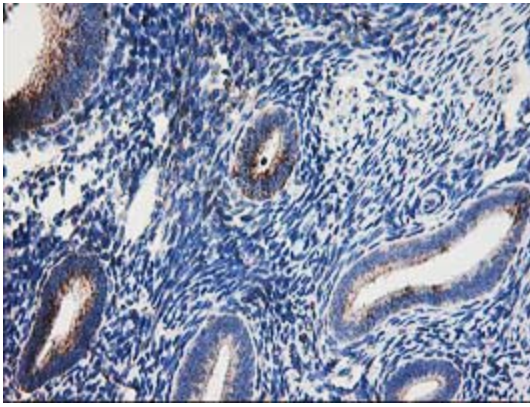
Anti-DLD mouse monoclonal antibody ([TA503387]) immunofluorescent staining of COS7 cells transiently transfected by pCMV6-ENTRY DLD ([RC200639]).



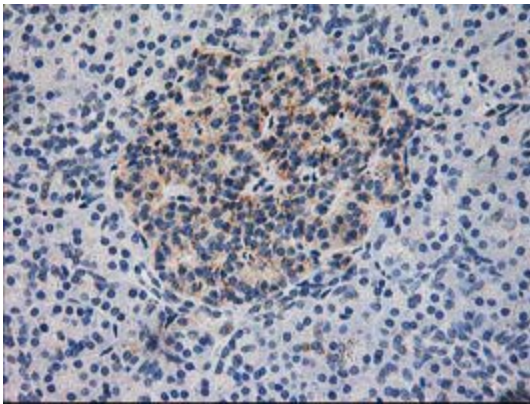
Immunohistochemical staining of paraffin-embedded Human lymph node tissue within the normal limits using anti-DLD mouse monoclonal antibody. (Heat-induced epitope retrieval by 10mM citric buffer, pH6.0, 100°C for 10min, [TA503387])



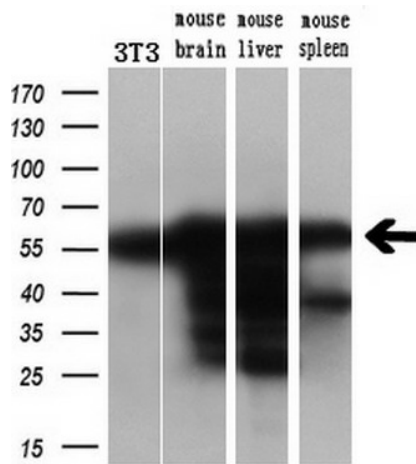
Immunohistochemical staining of paraffin-embedded Adenocarcinoma of Human endometrium tissue using anti-DLD mouse monoclonal antibody. (Heat-induced epitope retrieval by 10mM citric buffer, pH6.0, 100°C for 10min, [TA503387])



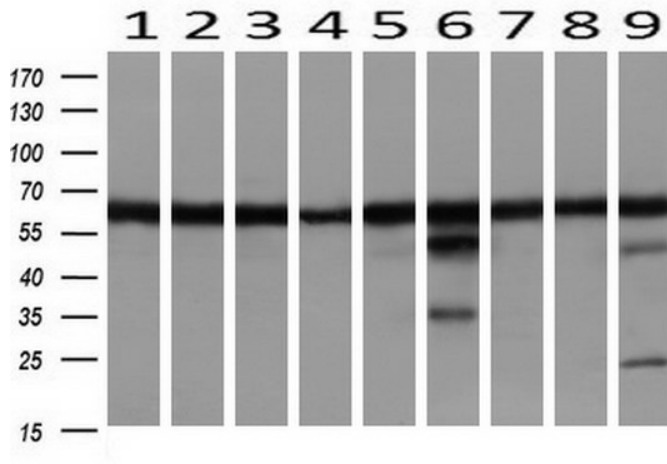
Immunohistochemical staining of paraffin-embedded Human endometrium tissue within the normal limits using anti-DLD mouse monoclonal antibody. (Heat-induced epitope retrieval by 10mM citric buffer, pH6.0, 100°C for 10min, [TA503387])



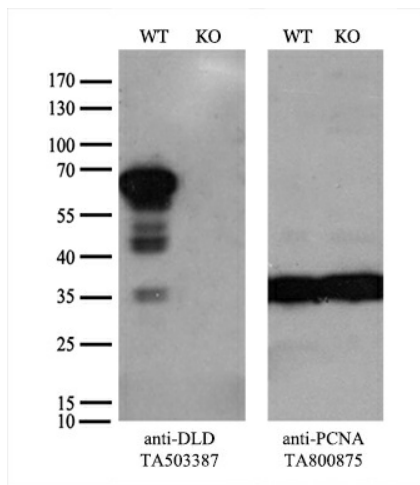
Immunohistochemical staining of paraffin-embedded Human pancreas tissue within the normal limits using anti-DLD mouse monoclonal antibody. (Heat-induced epitope retrieval by 10mM citric buffer, pH6.0, 100°C for 10min, [TA503387])



Western blot analysis of extracts (10ug) from a mouse cell line and 3 different mouse tissues by using anti-DLD monoclonal antibody (1:200).



Western blot analysis of extracts (10ug) from 9 Human tissue by using anti-DLD monoclonal antibody at 1:1000 (1: Testis; 2: Omentum; 3: Uterus; 4: Breast; 5: Brain; 6: Liver; 7: Ovary; 8: Thyroid gland; 9: colon).



Equivalent amounts of cell lysates (10 ug per lane) of wild-type HeLa cells (WT, Cat# LC810HELA) and DLD-Knockout HeLa cells (KO, Cat# [LC832718]) were separated by SDS-PAGE and immunoblotted with anti-DLD monoclonal antibody [TA503387] (1:500). Then the blotted membrane was stripped and reprobed with anti-PCNA antibody as a loading control.