

Product datasheet for **TA503373BM**

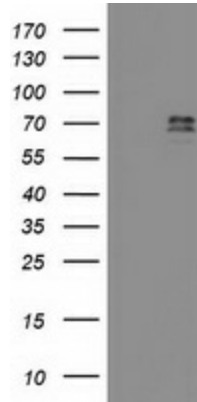
TFIIF (GTF2F1) Mouse Monoclonal Antibody (HRP conjugated) [Clone ID: OTI1C5]

Product data:

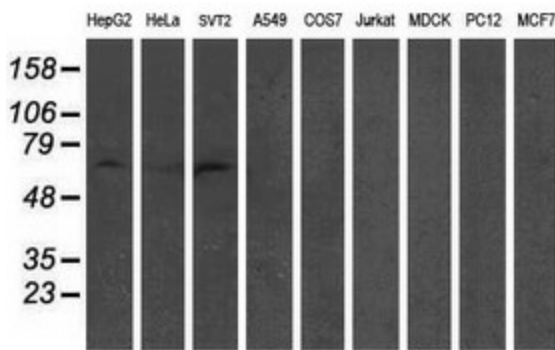
| | |
|-------------------------|--|
| Product Type: | Primary Antibodies |
| Clone Name: | OTI1C5 |
| Applications: | FC, IF, WB |
| Recommended Dilution: | WB 1:500~2000, IF 1:100, FLOW 1:100 |
| Reactivity: | Human, Mouse, Rat |
| Host: | Mouse |
| Isotype: | IgG1 |
| Clonality: | Monoclonal |
| Immunogen: | Full length human recombinant protein of human GTF2F1(NP_002087) produced in HEK293T cell. |
| Formulation: | PBS (pH 7.3) containing 1% BSA, 50% glycerol. |
| Concentration: | 0.5 mg/ml |
| Purification: | Purified from mouse ascites fluids or tissue culture supernatant by affinity chromatography (protein A/G) |
| Conjugation: | HRP |
| Storage: | Store at -20°C as received. |
| Stability: | Stable for 12 months from date of receipt. |
| Predicted Protein Size: | 58.1 kDa |
| Gene Name: | general transcription factor IIF subunit 1 |
| Database Link: | NP_002087 Entrez Gene 98053 Mouse Entrez Gene 316123 Rat Entrez Gene 2962 Human P35269 |
| Synonyms: | BTF4; RAP74; TF2F1; TFIIF |
| Protein Families: | Druggable Genome, Transcription Factors |
| Protein Pathways: | Basal transcription factors |



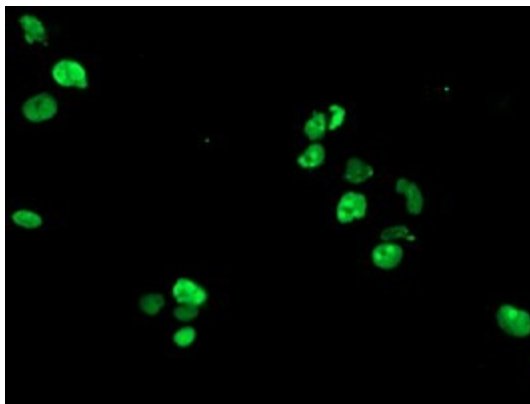
[View online »](#)

Product images:


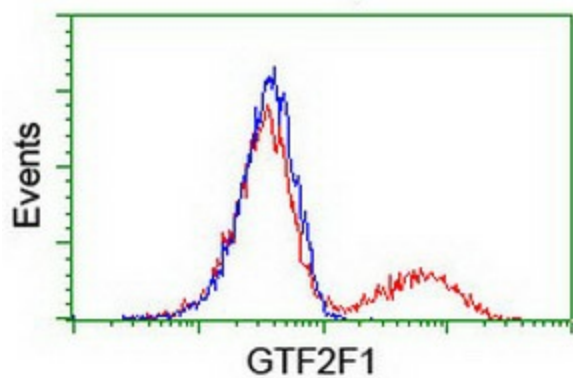
HEK293T cells were transfected with the pCMV6-ENTRY control (Left lane) or pCMV6-ENTRY GTF2F1 ([RC201294], Right lane) cDNA for 48 hrs and lysed. Equivalent amounts of cell lysates (5 ug per lane) were separated by SDS-PAGE and immunoblotted with anti-GTF2F1. Positive lysates [LY400767] (100ug) and [LC400767] (20ug) can be purchased separately from OriGene.



Western blot analysis of extracts (35ug) from 9 different cell lines by using anti-GTF2F1 monoclonal antibody (HepG2: human; HeLa: human; SVT2: mouse; A549: human; COS7: monkey; Jurkat: human; MDCK: canine; PC12: rat; MCF7: human).



Anti-GTF2F1 mouse monoclonal antibody ([TA503373]) immunofluorescent staining of COS7 cells transiently transfected by pCMV6-ENTRY GTF2F1 ([RC201294]).



HEK293T cells transfected with either [RC201294] overexpress plasmid (Red) or empty vector control plasmid (Blue) were immunostained by anti-GTF2F1 antibody ([TA503373]), and then analyzed by flow cytometry.