

Product datasheet for **TA503372**

TFIIF (GTF2F1) Mouse Monoclonal Antibody [Clone ID: OTI1D5]

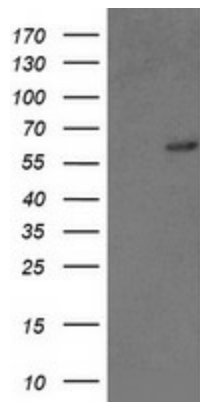
Product data:

| | |
|-------------------------|---|
| Product Type: | Primary Antibodies |
| Clone Name: | OTI1D5 |
| Applications: | FC, IF, WB |
| Recommended Dilution: | WB 1:1000, IF 1:100, FLOW 1:100 |
| Reactivity: | Human, Mouse, Rat |
| Host: | Mouse |
| Isotype: | IgG1 |
| Clonality: | Monoclonal |
| Immunogen: | Full length human recombinant protein of human GTF2F1(NP_002087) produced in HEK293T cell. |
| Formulation: | PBS (pH 7.3) containing 1% BSA, 50% glycerol and 0.02% sodium azide. |
| Concentration: | 0.88 mg/ml |
| Purification: | Purified from mouse ascites fluids or tissue culture supernatant by affinity chromatography (protein A/G) |
| Conjugation: | Unconjugated |
| Storage: | Store at -20°C as received. |
| Stability: | Stable for 12 months from date of receipt. |
| Predicted Protein Size: | 58.1 kDa |
| Gene Name: | general transcription factor IIF subunit 1 |
| Database Link: | NP_002087 Entrez Gene 98053 MouseEntrez Gene 316123 RatEntrez Gene 2962 Human P35269 |
| Synonyms: | BTF4; RAP74; TF2F1; TFIIF |
| Protein Families: | Druggable Genome, Transcription Factors |
| Protein Pathways: | Basal transcription factors |

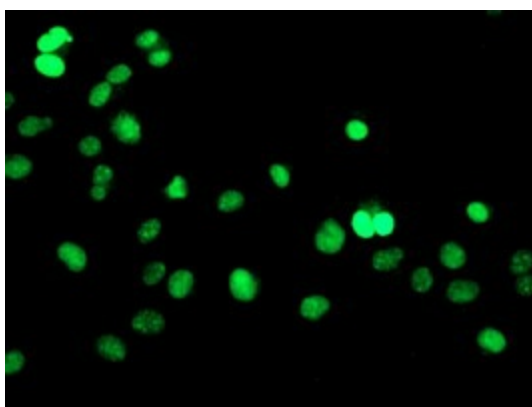


[View online »](#)

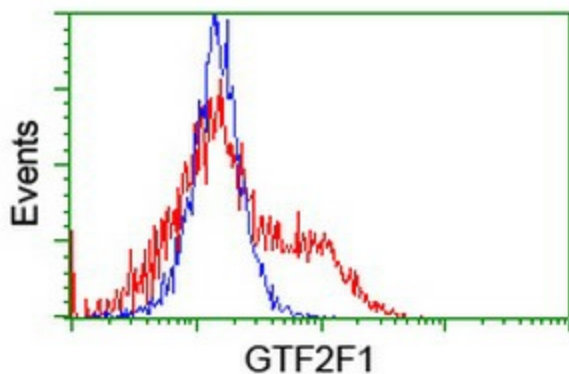
Product images:



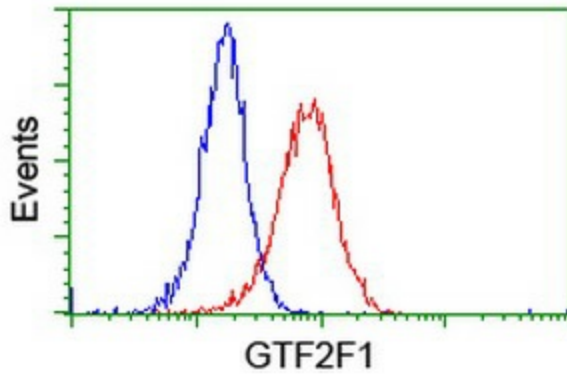
HEK293T cells were transfected with the pCMV6-ENTRY control (Left lane) or pCMV6-ENTRY GTF2F1 ([RC201294], Right lane) cDNA for 48 hrs and lysed. Equivalent amounts of cell lysates (5 ug per lane) were separated by SDS-PAGE and immunoblotted with anti-GTF2F1. Positive lysates [LY400767] (100ug) and [LC400767] (20ug) can be purchased separately from OriGene.



Anti-GTF2F1 mouse monoclonal antibody (TA503372) immunofluorescent staining of COS7 cells transiently transfected by pCMV6-ENTRY GTF2F1 ([RC201294]).



HEK293T cells transfected with either [RC201294] overexpress plasmid (Red) or empty vector control plasmid (Blue) were immunostained by anti-GTF2F1 antibody (TA503372), and then analyzed by flow cytometry.



Flow cytometric Analysis of Jurkat cells, using anti-GTF2F1 antibody (TA503372), (Red), compared to a nonspecific negative control antibody, (Blue).