

Product datasheet for **TA503370AM**

Apg3 (ATG3) Mouse Monoclonal Antibody (Biotin conjugated) [Clone ID: OTI4F6]

Product data:

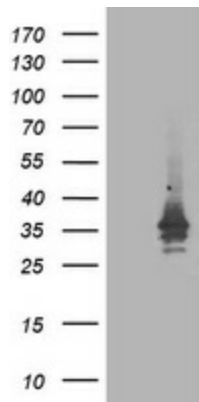
Product Type:	Primary Antibodies
Clone Name:	OTI4F6
Applications:	FC, IF, IHC, WB
Recommended Dilution:	WB 1:2000, IHC 1:150, IF 1:100, FLOW 1:100
Reactivity:	Human, Mouse, Rat
Host:	Mouse
Isotype:	IgG1
Clonality:	Monoclonal
Immunogen:	Full length human recombinant protein of human ATG3(NP_071933) produced in HEK293T cell.
Formulation:	PBS (pH 7.3) containing 1% BSA, 50% glycerol and 0.02% sodium azide.
Concentration:	0.5 mg/ml
Purification:	Purified from mouse ascites fluids or tissue culture supernatant by affinity chromatography (protein A/G)
Conjugation:	Biotin
Storage:	Store at -20°C as received.
Stability:	Stable for 12 months from date of receipt.
Predicted Protein Size:	35.7 kDa
Gene Name:	autophagy related 3
Database Link:	NP_071933 Entrez Gene 67841 Mouse Entrez Gene 171415 Rat Entrez Gene 64422 Human Q9NT62
Background:	Autophagy is a process of bulk degradation of cytoplasmic components by the lysosome or vacuole. Human ATG3 displays the same enzymatic characteristics in vitro as yeast Apg3, a protein-conjugating enzyme essential for autophagy (Tanida et al., 2002 [PubMed 11825910]). [supplied by OMIM]
Synonyms:	APG3; APG3-LIKE; APG3L; PC3-96



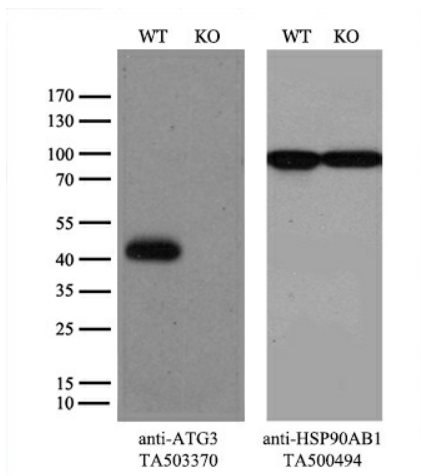
[View online »](#)

Protein Pathways: Regulation of autophagy

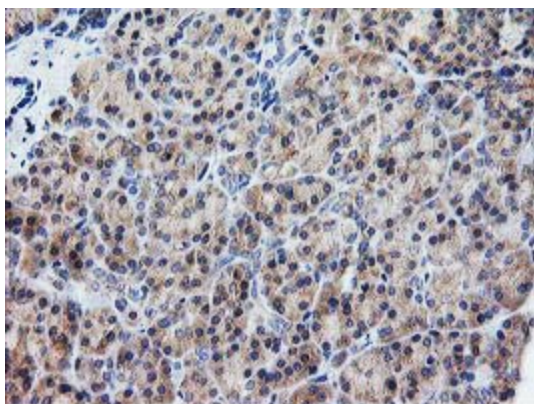
Product images:



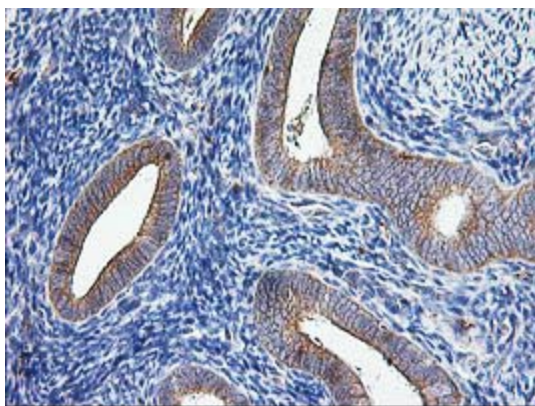
HEK293T cells were transfected with the pCMV6-ENTRY control (Left lane) or pCMV6-ENTRY ATG3 ([RC203453], Right lane) cDNA for 48 hrs and lysed. Equivalent amounts of cell lysates (5 ug per lane) were separated by SDS-PAGE and immunoblotted with anti-ATG3. Positive lysates [LY411559] (100ug) and [LC411559] (20ug) can be purchased separately from OriGene.



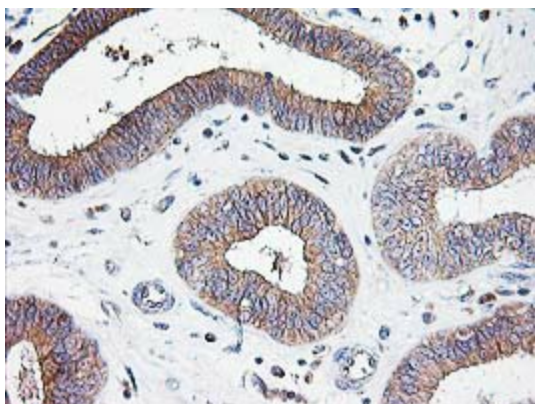
Equivalent amounts of cell lysates (10 ug per lane) of wild-type 293T cells (WT, Cat# LC810293T) and ATG3-Knockout 293T cells (KO, Cat# [LC812022]) were separated by SDS-PAGE and immunoblotted with anti-ATG3 monoclonal antibody [TA503370], (1:500). Then the blotted membrane was stripped and reprobed with anti-HSP90AB1 antibody ([TA500494]) as a loading control.



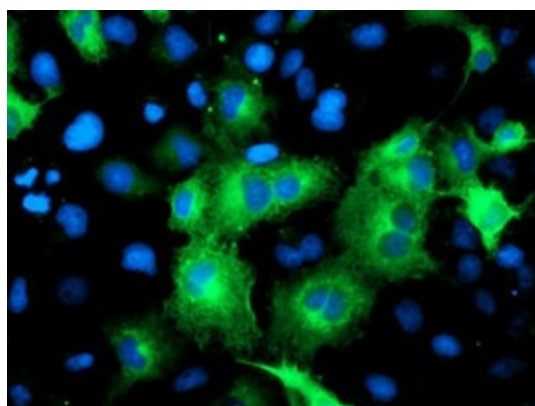
Immunohistochemical staining of paraffin-embedded Human pancreas tissue within the normal limits using anti-ATG3 mouse monoclonal antibody. (Heat-induced epitope retrieval by 10mM citric buffer, pH6.0, 100°C for 10min, [TA503370])



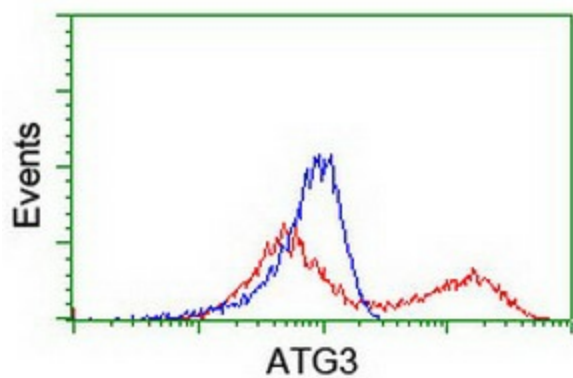
Immunohistochemical staining of paraffin-embedded Human endometrium tissue within the normal limits using anti-ATG3 mouse monoclonal antibody. (Heat-induced epitope retrieval by 10mM citric buffer, pH6.0, 100°C for 10min, [TA503370])



Immunohistochemical staining of paraffin-embedded Adenocarcinoma of Human endometrium tissue using anti-ATG3 mouse monoclonal antibody. (Heat-induced epitope retrieval by 10mM citric buffer, pH6.0, 100°C for 10min, [TA503370])



Anti-ATG3 mouse monoclonal antibody ([TA503370]) immunofluorescent staining of COS7 cells transiently transfected by pCMV6-ENTRY ATG3 ([RC203453]).



HEK293T cells transfected with either [RC203453] overexpress plasmid (Red) or empty vector control plasmid (Blue) were immunostained by anti-ATG3 antibody ([TA503370]), and then analyzed by flow cytometry.