

## Product datasheet for **TA503361AM**

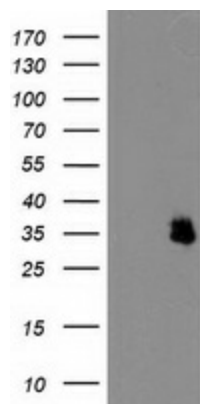
### IFI35 Mouse Monoclonal Antibody (Biotin conjugated) [Clone ID: OTI2H5]

#### Product data:

Product Type:	Primary Antibodies
Clone Name:	OTI2H5
Applications:	WB
Recommended Dilution:	WB 1:500~2000
Reactivity:	Human
Host:	Mouse
Isotype:	IgG2a
Clonality:	Monoclonal
Immunogen:	Full length human recombinant protein of human IFI35(NP_005524) produced in HEK293T cell.
Formulation:	PBS (pH 7.3) containing 1% BSA, 50% glycerol and 0.02% sodium azide.
Concentration:	0.5 mg/ml
Purification:	Purified from mouse ascites fluids or tissue culture supernatant by affinity chromatography (protein A/G)
Conjugation:	Biotin
Storage:	Store at -20°C as received.
Stability:	Stable for 12 months from date of receipt.
Predicted Protein Size:	31.6 kDa
Gene Name:	interferon induced protein 35
Database Link:	<a href="#">NP_005524</a> <a href="#">Entrez Gene 3430 Human</a> <a href="#">P80217</a>
Synonyms:	IFP35



[View online »](#)

**Product images:**

HEK293T cells were transfected with the pCMV6-ENTRY control (Left lane) or pCMV6-ENTRY IFI35 ([RC200929], Right lane) cDNA for 48 hrs and lysed. Equivalent amounts of cell lysates (5 ug per lane) were separated by SDS-PAGE and immunoblotted with anti-IFI35. Positive lysates [LY401696] (100ug) and [LC401696] (20ug) can be purchased separately from OriGene.