

Product datasheet for **TA503360M**

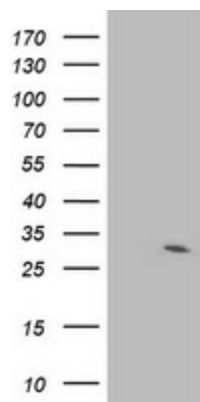
IFI35 Mouse Monoclonal Antibody [Clone ID: OTI2G5]

Product data:

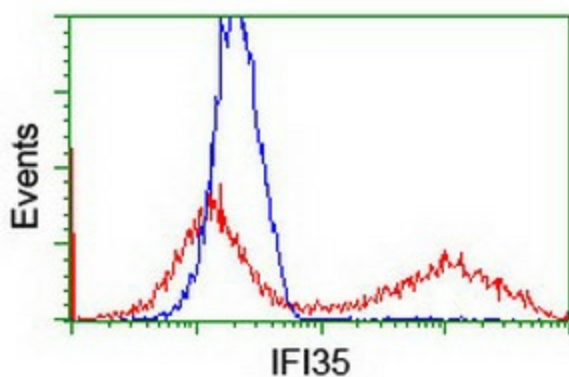
Product Type:	Primary Antibodies
Clone Name:	OTI2G5
Applications:	FC, WB
Recommended Dilution:	WB 1:500~2000, FLOW 1:100
Reactivity:	Human
Host:	Mouse
Isotype:	IgG2a
Clonality:	Monoclonal
Immunogen:	Full length human recombinant peotein of human IFI35(NP_005524) produced in HEK293T cell.
Formulation:	PBS (pH 7.3) containing 1% BSA, 50% glycerol and 0.02% sodium azide.
Concentration:	0.41 mg/ml
Purification:	Purified from mouse ascites fluids or tissue culture supernatant by affinity chromatography (protein A/G)
Conjugation:	Unconjugated
Storage:	Store at -20°C as received.
Stability:	Stable for 12 months from date of receipt.
Predicted Protein Size:	31.6 kDa
Gene Name:	interferon induced protein 35
Database Link:	NP_005524 Entrez Gene 3430 Human P80217
Synonyms:	IFP35

[View online »](#)

Product images:



HEK293T cells were transfected with the pCMV6-ENTRY control (Left lane) or pCMV6-ENTRY IFI35 ([RC200929], Right lane) cDNA for 48 hrs and lysed. Equivalent amounts of cell lysates (5 ug per lane) were separated by SDS-PAGE and immunoblotted with anti-IFI35. Positive lysates [LY401696] (100ug) and [LC401696] (20ug) can be purchased separately from OriGene.



HEK293T cells transfected with either [RC200929] overexpress plasmid (Red) or empty vector control plasmid (Blue) were immunostained by anti-IFI35 antibody ([TA503360]), and then analyzed by flow cytometry.