

## Product datasheet for **TA503340M**

### UBOX5 Mouse Monoclonal Antibody [Clone ID: OTI1C5]

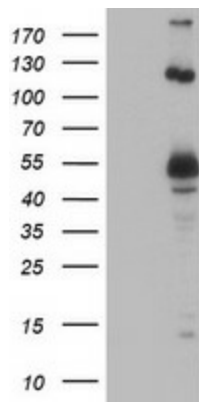
#### Product data:

Product Type:	Primary Antibodies
Clone Name:	OTI1C5
Applications:	FC, IF, IHC, WB
Recommended Dilution:	WB 1:200~500, IHC 1:150, FLOW 1:100, IF: 1:100
Reactivity:	Human
Host:	Mouse
Isotype:	IgG2a
Clonality:	Monoclonal
Immunogen:	Human recombinant protein fragment corresponding to amino acids 1-130 and C 419-487 of human UBOX5(NP_955447) produced in E.coli.
Formulation:	PBS (pH 7.3) containing 1% BSA, 50% glycerol and 0.02% sodium azide.
Concentration:	1 mg/ml
Purification:	Purified from mouse ascites fluids or tissue culture supernatant by affinity chromatography (protein A/G)
Conjugation:	Unconjugated
Storage:	Store at -20°C as received.
Stability:	Stable for 12 months from date of receipt.
Gene Name:	U-box domain containing 5
Database Link:	<a href="#">NP_955447</a> <a href="#">Entrez Gene 22888 Human</a> <a href="#">O94941</a>
Synonyms:	hUIP5; RNF37; UBCE7IP5; UIP5
Protein Families:	Druggable Genome
Protein Pathways:	Ubiquitin mediated proteolysis

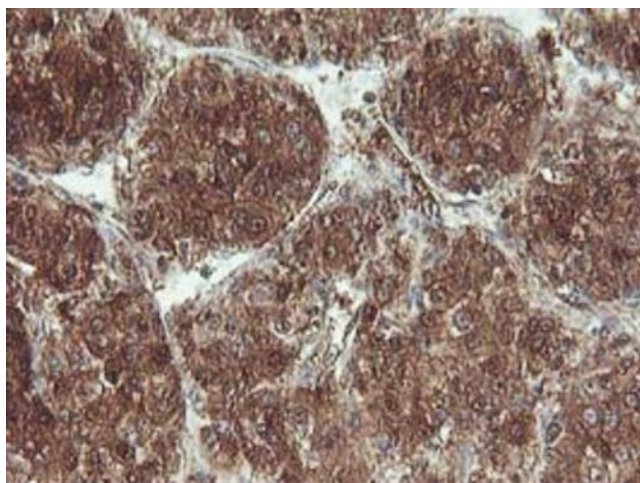


[View online »](#)

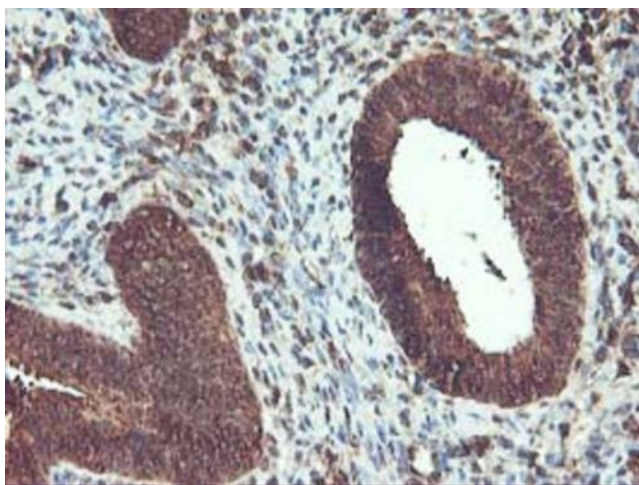
## Product images:



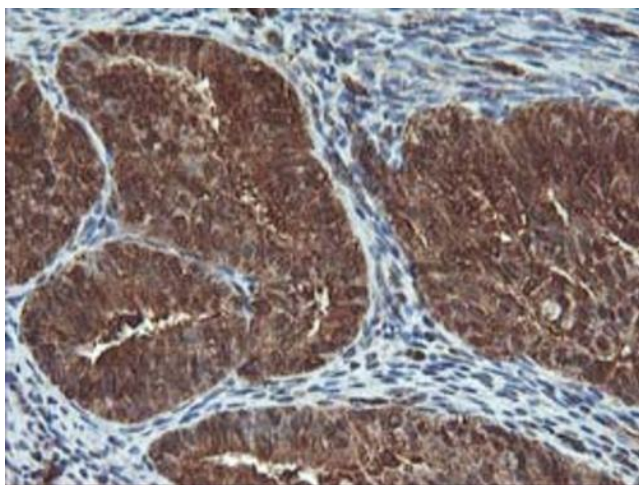
HEK293T cells were transfected with the pCMV6-ENTRY control (Cat# [PS100001], Left lane) or pCMV6-ENTRY UBOX5 (Cat# [RC208505], Right lane) cDNA for 48 hrs and lysed. Equivalent amounts of cell lysates (5 ug per lane) were separated by SDS-PAGE and immunoblotted with anti-UBOX5 (Cat# [TA503340]).



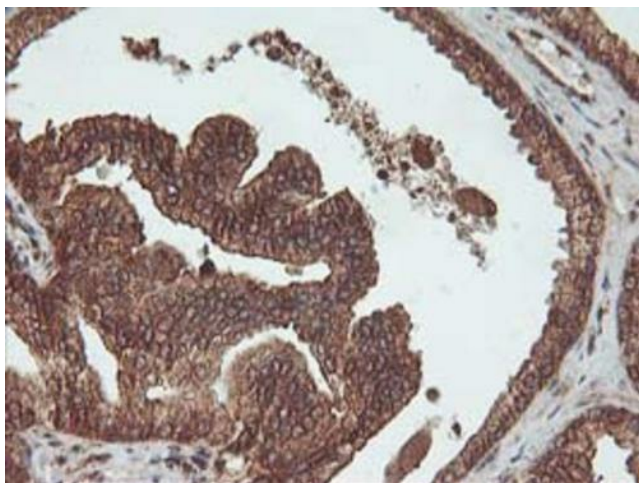
Immunohistochemical staining of paraffin-embedded Carcinoma of Human liver tissue using anti-UBOX5 mouse monoclonal antibody. Heat-induced epitope retrieval by EDTA solution buffer pH 8.0 at 120°C for 3 min.



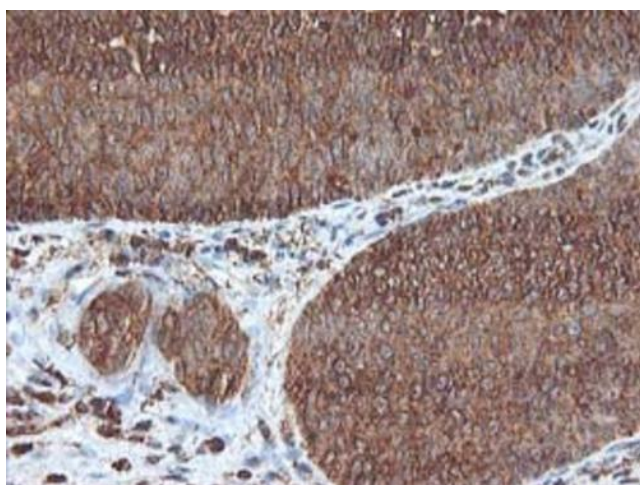
Immunohistochemical staining of paraffin-embedded Human endometrium tissue within the normal limits using anti-UBOX5 mouse monoclonal antibody. Heat-induced epitope retrieval by EDTA solution buffer pH 8.0 at 120°C for 3 min.



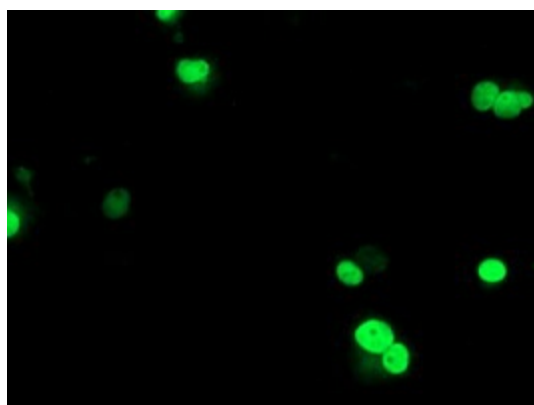
Immunohistochemical staining of paraffin-embedded Adenocarcinoma of Human endometrium tissue using anti-UBOX5 mouse monoclonal antibody. Heat-induced epitope retrieval by EDTA solution buffer pH 8.0 at 120°C for 3 min.



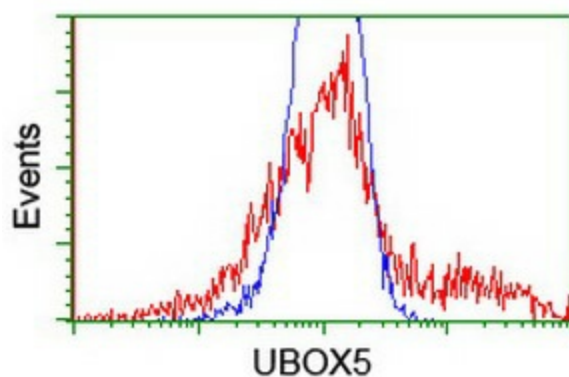
Immunohistochemical staining of paraffin-embedded Carcinoma of Human prostate tissue using anti-UBOX5 mouse monoclonal antibody. Heat-induced epitope retrieval by EDTA solution buffer pH 8.0 at 120°C for 3 min.



Immunohistochemical staining of paraffin-embedded Carcinoma of Human bladder tissue using anti-UBOX5 mouse monoclonal antibody. Heat-induced epitope retrieval by EDTA solution buffer pH 8.0 at 120°C for 3 min.

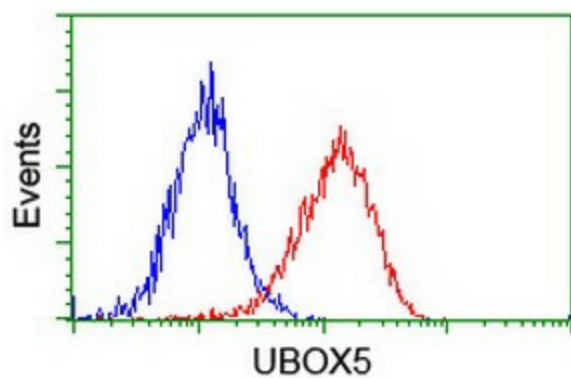


Anti-UBOX5 mouse monoclonal antibody ([TA503340]) immunofluorescent staining of COS7 cells transiently transfected by pCMV6-ENTRY UBOX5 ([RC208505]).

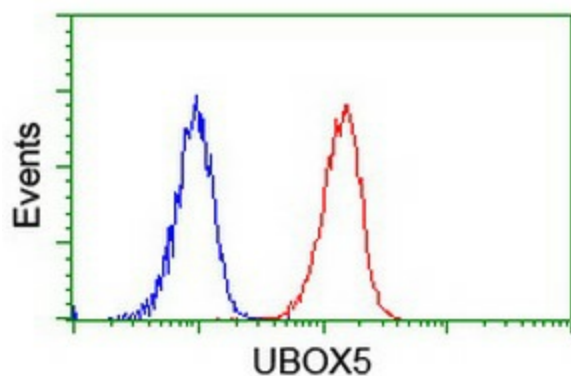


HEK293T cells transfected with either [RC208505] overexpress plasmid (Red) or empty vector control plasmid (Blue) were immunostained by anti-UBOX5 antibody ([TA503340]), and then analyzed by flow cytometry.





Flow cytometric Analysis of HeLa cells, using anti-UBOX5 antibody (TA503340), (Red), compared to a nonspecific negative control antibody, (Blue).



Flow cytometric Analysis of Jurkat cells, using anti-UBOX5 antibody (TA503340), (Red), compared to a nonspecific negative control antibody, (Blue).