

Product datasheet for **TA503339S**

XPNPEP3 Mouse Monoclonal Antibody [Clone ID: OTI4B8]

Product data:

Product Type:	Primary Antibodies
Clone Name:	OTI4B8
Applications:	FC, IF, IHC, WB
Recommended Dilution:	WB 1:500~2000, IHC 1:150, IF 1:100, FLOW 1:100
Reactivity:	Human, Dog, Rat, Monkey, Mouse
Host:	Mouse
Isotype:	IgG2a
Clonality:	Monoclonal
Immunogen:	Full length human recombinant protein of human XPNPEP3(NP_071381) produced in HEK293 cell.
Formulation:	PBS (pH 7.3) containing 1% BSA, 50% glycerol and 0.02% sodium azide.
Concentration:	0.86 mg/ml
Purification:	Purified from mouse ascites fluids or tissue culture supernatant by affinity chromatography (protein A/G)
Conjugation:	Unconjugated
Storage:	Store at -20°C as received.
Stability:	Stable for 12 months from date of receipt.
Predicted Protein Size:	56.9 kDa
Gene Name:	X-prolyl aminopeptidase 3
Database Link:	NP_071381 Entrez Gene 321003 Mouse Entrez Gene 685823 Rat Entrez Gene 481237 Dog Entrez Gene 705778 Monkey Entrez Gene 63929 Human Q9NQH7



[View online »](#)

Background:

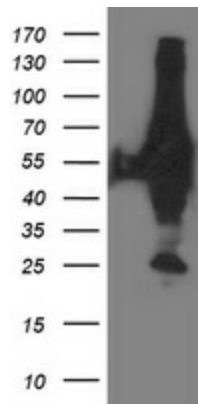
The protein encoded by this gene belongs to the family of X-pro-aminopeptidases that utilize a metal cofactor, and remove the N-terminal amino acid from peptides with a proline residue in the penultimate position. This protein has been shown to localize to the mitochondria of renal cells, and have a role in ciliary function. Mutations in this gene are associated with nephronophthisis-like nephropathy-1. Alternatively spliced transcript variants encoding different isoforms have been noted for this gene, however, expression of some of these isoforms in vivo is not known.

Synonyms:

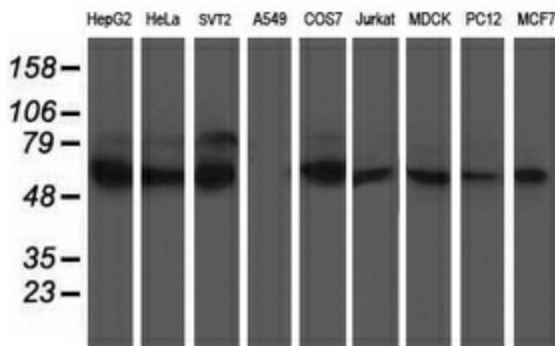
APP3; ICP55; NPHPL1

Protein Families:

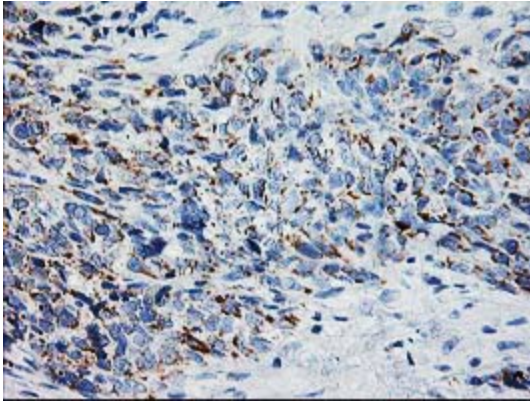
Druggable Genome, Protease

Product images:


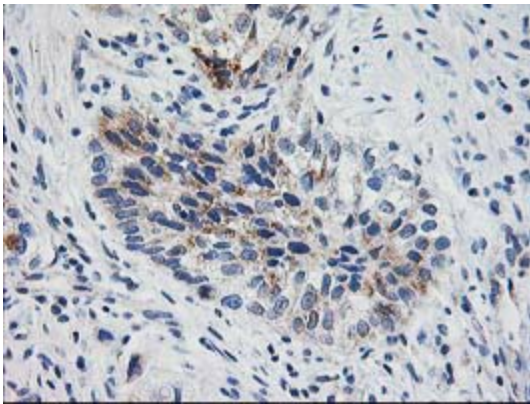
HEK293T cells were transfected with the pCMV6-ENTRY control (Left lane) or pCMV6-ENTRY XPNPEP3 ([RC200888], Right lane) cDNA for 48 hrs and lysed. Equivalent amounts of cell lysates (5 ug per lane) were separated by SDS-PAGE and immunoblotted with anti-XPNPEP3. Positive lysates [LY402903] (100ug) and [LC402903] (20ug) can be purchased separately from OriGene.



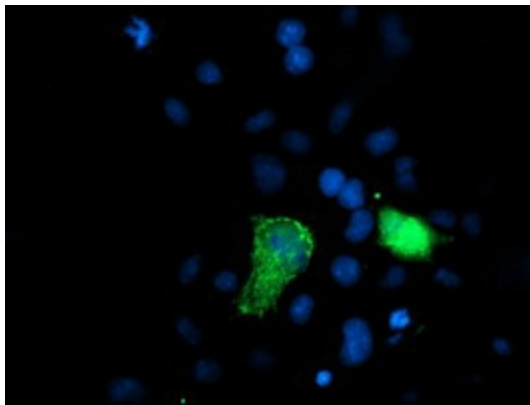
Western blot analysis of extracts (35ug) from 9 different cell lines by using anti-XPNPEP3 monoclonal antibody.



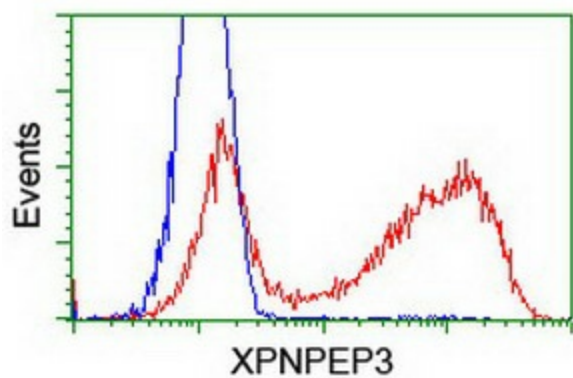
Immunohistochemical staining of paraffin-embedded Adenocarcinoma of Human colon tissue using anti-XPNPEP3 mouse monoclonal antibody. (Heat-induced epitope retrieval by 10mM citric buffer, pH6.0, 100°C for 10min, [TA503339])



Immunohistochemical staining of paraffin-embedded Carcinoma of Human bladder tissue using anti-XPNPEP3 mouse monoclonal antibody. (Heat-induced epitope retrieval by 10mM citric buffer, pH6.0, 100°C for 10min, [TA503339])



Anti-XPNPEP3 mouse monoclonal antibody ([TA503339]) immunofluorescent staining of COS7 cells transiently transfected by pCMV6-ENTRY XPNPEP3 ([RC200888]).



HEK293T cells transfected with either [RC200888] overexpress plasmid (Red) or empty vector control plasmid (Blue) were immunostained by anti-XPNPEP3 antibody ([TA503339]), and then analyzed by flow cytometry.