

Product datasheet for **TA503338BM**

IRF6 Mouse Monoclonal Antibody (HRP conjugated) [Clone ID: OTI1D4]

Product data:

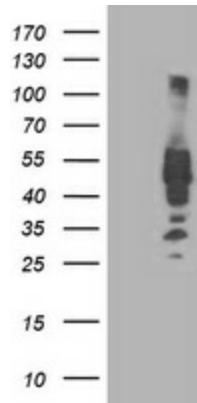
Product Type:	Primary Antibodies
Clone Name:	OTI1D4
Applications:	FC, IF, WB
Recommended Dilution:	WB 1:2000, IF 1:100, FLOW 1:100
Reactivity:	Human, Mouse, Rat
Host:	Mouse
Isotype:	IgG1
Clonality:	Monoclonal
Immunogen:	Full length human recombinant protein of human IRF6(NP_006138)produced in HEK293T cell.
Formulation:	PBS (pH 7.3) containing 1% BSA, 50% glycerol.
Concentration:	0.5 mg/ml
Purification:	Purified from mouse ascites fluids or tissue culture supernatant by affinity chromatography (protein A/G)
Conjugation:	HRP
Storage:	Store at -20°C as received.
Stability:	Stable for 12 months from date of receipt.
Predicted Protein Size:	52.9 kDa
Gene Name:	interferon regulatory factor 6
Database Link:	NP_006138 Entrez Gene 54139 Mouse Entrez Gene 364081 Rat Entrez Gene 3664 Human Q14896
Background:	This gene encodes a member of the interferon regulatory transcription factor (IRF) family. Family members share a highly-conserved N-terminal helix-turn-helix DNA-binding domain and a less conserved C-terminal protein-binding domain. Mutations in this gene can cause van der Woude syndrome and popliteal pterygium syndrome. This protein is involved in palate formation. [provided by RefSeq]
Synonyms:	LPS; OFC6; PIT; PPS; PPS1; VWS; VWS1



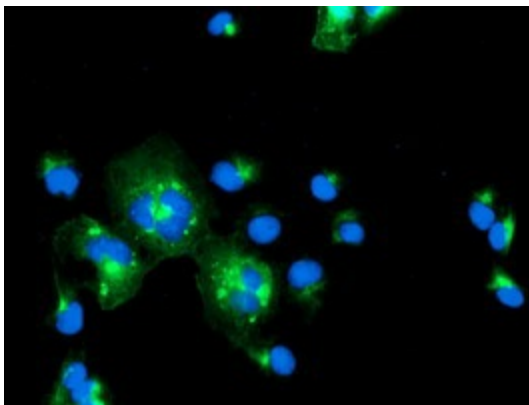
[View online »](#)

Protein Families: ES Cell Differentiation/IPS, Transcription Factors

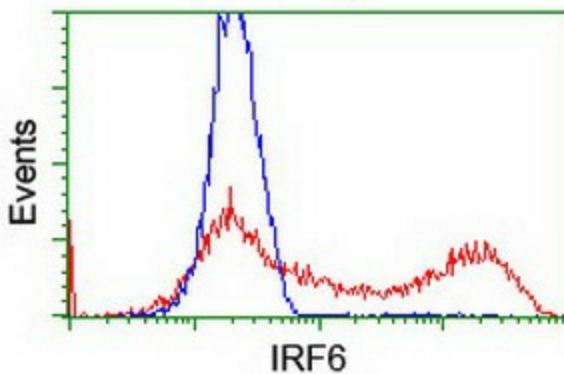
Product images:



HEK293T cells were transfected with the pCMV6-ENTRY control (Left lane) or pCMV6-ENTRY IRF6 ([RC201579], Right lane) cDNA for 48 hrs and lysed. Equivalent amounts of cell lysates (5 ug per lane) were separated by SDS-PAGE and immunoblotted with anti-IRF6. Positive lysates [LY401852] (100ug) and [LC401852] (20ug) can be purchased separately from OriGene.



Anti-IRF6 mouse monoclonal antibody ([TA503338]) immunofluorescent staining of COS7 cells transiently transfected by pCMV6-ENTRY IRF6 ([RC201579]).



HEK293T cells transfected with either [RC201579] overexpress plasmid (Red) or empty vector control plasmid (Blue) were immunostained by anti-IRF6 antibody ([TA503338]), and then analyzed by flow cytometry.