

## Product datasheet for **TA503336S**

### **PDE1B Mouse Monoclonal Antibody [Clone ID: OT11D6]**

#### **Product data:**

Product Type:	Primary Antibodies
Clone Name:	OT11D6
Applications:	IF, WB
Recommended Dilution:	WB 1:2000, IF 1:100
Reactivity:	Human, Mouse, Rat
Host:	Mouse
Isotype:	IgG2b
Clonality:	Monoclonal
Immunogen:	Full length human recombinant protein of human PDE1B(NP_000915) produced in HEK293T cell.
Formulation:	PBS (pH 7.3) containing 1% BSA, 50% glycerol and 0.02% sodium azide.
Concentration:	0.74 mg/ml
Purification:	Purified from mouse ascites fluids or tissue culture supernatant by affinity chromatography (protein A/G)
Conjugation:	Unconjugated
Storage:	Store at -20°C as received.
Stability:	Stable for 12 months from date of receipt.
Predicted Protein Size:	61.2 kDa
Gene Name:	phosphodiesterase 1B
Database Link:	<a href="#">NP_000915</a> <a href="#">Entrez Gene 18574 Mouse</a> <a href="#">Entrez Gene 29691 Rat</a> <a href="#">Entrez Gene 5153 Human</a> <a href="#">Q01064</a>



[View online »](#)

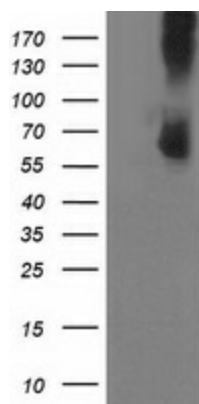
**Background:** The protein encoded by this gene belongs to the cyclic nucleotide phosphodiesterase (PDE) family, and PDE1 subfamily. Members of the PDE1 family are calmodulin-dependent PDEs that are stimulated by a calcium-calmodulin complex. This PDE has dual-specificity for the second messengers, cAMP and cGMP, with a preference for cGMP as a substrate. cAMP and cGMP function as key regulators of many important physiological processes. Alternatively spliced transcript variants encoding different isoforms have been described for this gene. [provided by RefSeq, Jul 2011]

**Synonyms:** PDE1B1; PDES1B

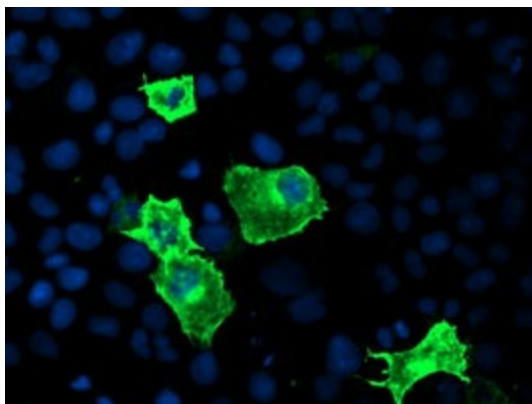
**Protein Families:** Druggable Genome

**Protein Pathways:** Calcium signaling pathway, Progesterone-mediated oocyte maturation, Purine metabolism

### Product images:



HEK293T cells were transfected with the pCMV6-ENTRY control (Left lane) or pCMV6-ENTRY PDE1B ([RC206588], Right lane) cDNA for 48 hrs and lysed. Equivalent amounts of cell lysates (5 ug per lane) were separated by SDS-PAGE and immunoblotted with anti-PDE1B. Positive lysates [LY400337] (100ug) and [LC400337] (20ug) can be purchased separately from OriGene.



Anti-PDE1B mouse monoclonal antibody ([TA503336]) immunofluorescent staining of COS7 cells transiently transfected by pCMV6-ENTRY PDE1B ([RC206588]).